

IL-21 Receptor Antibody
Catalog # ASC10143**Specification**

IL-21 Receptor Antibody - Product Information

Application	WB, IHC-P, IF, E
Primary Accession	Q9HBE5
Other Accession	NP_068570 , 11141869
Reactivity	Human, Mouse, Rat
Host	Rabbit
Clonality	Polyclonal
Isotype	IgG
Calculated MW	60 kDa KDa
Application Notes	IL-21 receptor antibody can be used for detection of IL-21 receptor by Western blot at 1 µg/mL. An approximately 60 kDa band can be detected. Antibody can also be used for immunohistochemistry starting at 10 µg/mL. For immunofluorescence start at 20 µg/mL.

IL-21 Receptor Antibody - Additional InformationGene ID **50615****Other Names**

IL-21 Receptor Antibody: NILR, CD360, NILR, UNQ3121/PRO10273, Interleukin-21 receptor, Novel interleukin receptor, IL-21 receptor, interleukin 21 receptor

Target/Specificity

IL21R;

Reconstitution & Storage

IL-21 Receptor antibody can be stored at 4°C for three months and -20°C, stable for up to one year. As with all antibodies care should be taken to avoid repeated freeze thaw cycles. Antibodies should not be exposed to prolonged high temperatures.

Precautions

IL-21 Receptor Antibody is for research use only and not for use in diagnostic or therapeutic procedures.

IL-21 Receptor Antibody - Protein Information**Name** IL21R**Synonyms** NILR**Function**

This is a receptor for interleukin-21.

Cellular Location

Membrane; Single-pass type I membrane protein.

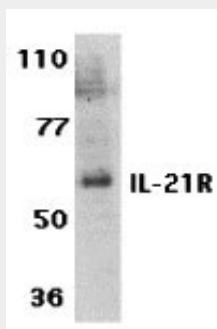
Tissue Location

Selectively expressed in lymphoid tissues. Most highly expressed in thymus and spleen

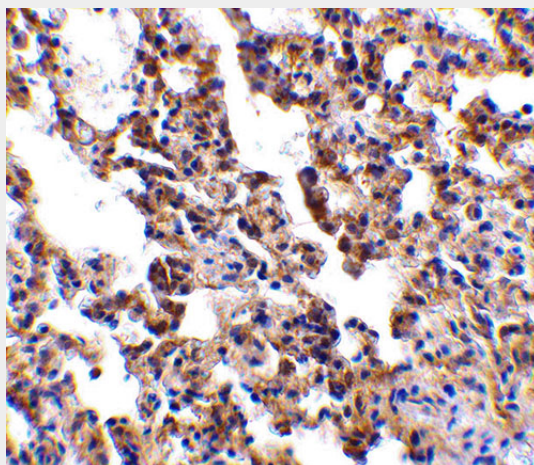
IL-21 Receptor Antibody - Protocols

Provided below are standard protocols that you may find useful for product applications.

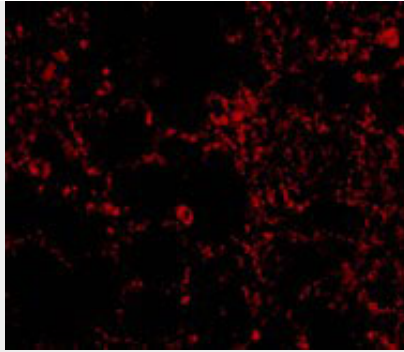
- [Western Blot](#)
- [Blocking Peptides](#)
- [Dot Blot](#)
- [Immunohistochemistry](#)
- [Immunofluorescence](#)
- [Immunoprecipitation](#)
- [Flow Cytometry](#)
- [Cell Culture](#)

IL-21 Receptor Antibody - Images

Western blot analysis of IL-21 receptor expression in human Raji cell lysate with IL-21 Receptor antibody at 1 µg /ml.



Immunohistochemistry of IL-21 receptor in rat lung with IL-21 receptor antibody at 10 µg/mL.



Immunofluorescence of IL-21 Receptor in Rat Lung cells with IL-21 Receptor antibody at 20 $\mu\text{g/mL}$.

IL-21 Receptor Antibody - Background

IL-21 Receptor Antibody: A novel cytokine related to IL-2 and IL-15 was recently identified and designated IL-21. The receptor for IL-21 (IL-21R, also termed NILR for novel Interleukin receptor) is a new member of the class I cytokine receptor family. IL-21R forms a complex with the common cytokine receptor gamma chain, gammac, and mediates IL-21 signaling. Both IL-21R and the gammac are necessary for the IL-21 function. IL-21 and its receptor activate JAK-STAT signaling pathway. IL-21R is expressed in spleen, thymus, natural killer (NK), T and B cell lines. IL-21 plays a role in the proliferation and maturation of NK, B and T cell populations.

IL-21 Receptor Antibody - References

Parrish-Novak J, Dillon SR, Nelson A, et al. Interleukin 21 and its receptor are involved in NK cell expansion and regulation of lymphocyte function. *Nature*. 2000;408(6808):57-63.
Ozaki K, Kikly K, Michalovich D, et al. Cloning of a type I cytokine receptor most related to the IL-2 receptor β chain. *Proc Natl Acad Sci USA*. 2000;97(21):11439-44.
Asao H, Okuyama C, Kumaki S, et al. the common γ -chain is an indispensable subunit of the IL-21 receptor complex. *J Immunol*. 2001;167(1):1-5.
Vosshenrich CA, Di Santo JP. Cytokines: IL-21 joins the $\gamma(c)$ -dependent network. *Curr Biol*. 2001;11(5):R175-7.