

**MCG10 Antibody**  
**Catalog # ASC10145****Specification**

---

**MCG10 Antibody - Product Information**

Application	WB, ICC, IF
Primary Accession	<a href="#">P57723</a>
Other Accession	<a href="#">EAW65166</a> , <a href="#">119585570</a>
Reactivity	Human
Host	Rabbit
Clonality	Polyclonal
Isotype	IgG
Application Notes	MCG10 antibody can be used for detection of MCG10 by Western blot at 0.5 - 2 µg/mL. Antibody can also be used for immunocytochemistry starting at 1 µg/mL. For immunofluorescence start at 20 µg/mL.

**MCG10 Antibody - Additional Information**

Gene ID	57060
<b>Other Names</b>	
MCG10 Antibody: CBP, LIP4, MCG10Alpha-CP4, poly(rC) binding protein 4	

**Target/Specificity**  
PCBP4;**Reconstitution & Storage**

MCG10 antibody can be stored at 4°C for three months and -20°C, stable for up to one year. As with all antibodies care should be taken to avoid repeated freeze thaw cycles. Antibodies should not be exposed to prolonged high temperatures.

**Precautions**

MCG10 Antibody is for research use only and not for use in diagnostic or therapeutic procedures.

**MCG10 Antibody - Protein Information****Name** PCBP4**Function**

Single-stranded nucleic acid binding protein that binds preferentially to oligo dC.

**Cellular Location**

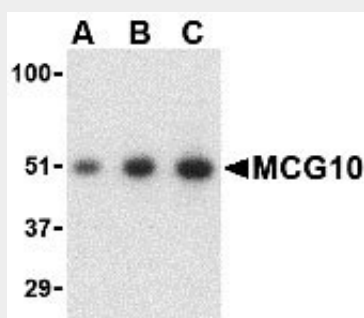
Cytoplasm.

**MCG10 Antibody - Protocols**

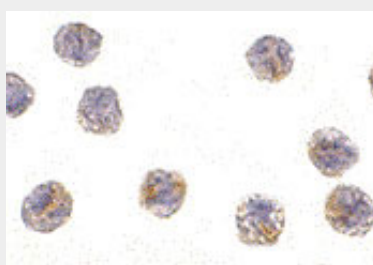
Provided below are standard protocols that you may find useful for product applications.

- [Western Blot](#)
- [Blocking Peptides](#)
- [Dot Blot](#)
- [Immunohistochemistry](#)
- [Immunofluorescence](#)
- [Immunoprecipitation](#)
- [Flow Cytometry](#)
- [Cell Culture](#)

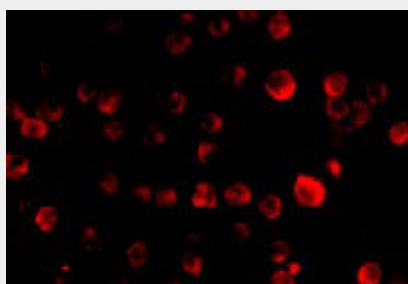
#### **MCG10 Antibody - Images**



Western blot analysis of MCG10 in HeLa cell lysate with MCG10 antibody at (A) 0.5, (B) 1 and (C) 2  $\mu\text{g/mL}$ .



Immunocytochemistry of MCG10 in HeLa cells with MCG10 antibody at 1  $\mu\text{g/mL}$ .



Immunofluorescence of MCG10 in HeLa cells with MCG10 antibody at 20  $\mu\text{g/mL}$ .

#### **MCG10 Antibody - Background**

**MCG10 Antibody:** MCG10 is a member of the KH-domain RNA-binding protein family. Proteins of this family also referred to as alpha-CPs, bind to RNA with specificity for C-rich pyrimidine regions. Alpha-CPs play important roles in post-transcriptional activities and have different cellular distributions. MCG10 is induced by p53 and DNA damage via two p53-responsive promoter elements. Its overexpression in transfected cells results in the suppression of cell proliferation by inducing apoptosis and cell cycle arrest in G2-M. Decreased expression of one isoform of MCG10

has been observed in many forms of lung cancer, leading to speculation that MCG10 can act as a tumor suppressor. Multiple alternatively spliced isoforms of MCG10 have been identified.

### **MCG10 Antibody - References**

Makeyev AV and Liebhaber SA. The poly(C)-binding proteins: a multiplicity of functions and a search for mechanisms. RNA2002; 8:265-78.

Zhu J and Chen X. MCG10, a novel p53 target gene that encodes a KH domain RNA-binding protein, is capable of inducing apoptosis and cell cycle arrest in G2-M. Mol. Cell Biol.2000; 20:5602-5618.

Pio R, Zudaire I, Pino I, et al. a-CP-4, encoded by a putative tumor suppressor gene at 3p21, but not its alternative splice variant aCP-4a, is underexpressed in lung cancer. Cancer Res.2004; 64:4171-9.