

KappaB ras1 Antibody
Catalog # ASC10150**Specification**

KappaB ras1 Antibody - Product Information

Application	WB, ICC
Primary Accession	Q9NYS0
Other Accession	AAF34998 , 7008402
Reactivity	Human, Mouse
Host	Rabbit
Clonality	Polyclonal
Isotype	IgG
Application Notes	KappaB ras1 antibody can be used for detection of KappaB ras1 by Western blot at 0.5 - 2 µg/mL. Antibody can also be used for immunocytochemistry starting at 1 µg/mL.

KappaB ras1 Antibody - Additional InformationGene ID **28512****Other Names**

KappaB ras1 Antibody: KBRAS1, kappaB-Ras1, KBRAS1, NF-kappa-B inhibitor-interacting Ras-like protein 1, I-kappa-B-interacting Ras-like protein 1, Kappa B-Ras protein 1, NFKB inhibitor interacting Ras-like 1

Target/Specificity

NKIRAS1;

Reconstitution & Storage

KappaB ras1 antibody can be stored at 4°C for three months and -20°C, stable for up to one year. As with all antibodies care should be taken to avoid repeated freeze thaw cycles. Antibodies should not be exposed to prolonged high temperatures.

Precautions

KappaB ras1 Antibody is for research use only and not for use in diagnostic or therapeutic procedures.

KappaB ras1 Antibody - Protein Information**Name** NKIRAS1**Synonyms** KBRAS1**Function**

Atypical Ras-like protein that acts as a potent regulator of NF-kappa-B activity by preventing the degradation of NF-kappa-B inhibitor beta (NFKBIB) by most signals, explaining why NFKBIB is more resistant to degradation. May act by blocking phosphorylation of NFKBIB and mediating

cytoplasmic retention of p65/RELA NF-kappa-B subunit. It is unclear whether it acts as a GTPase. Both GTP- and GDP-bound forms block phosphorylation of NFKBIB.

Cellular Location

Cytoplasm.

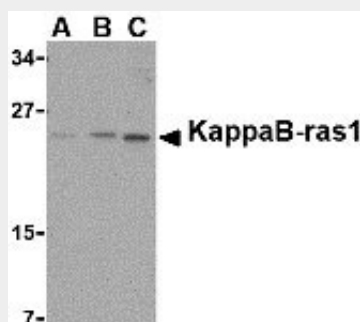
Tissue Location

Widely expressed..

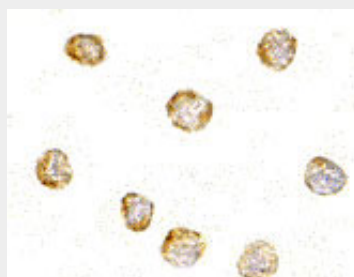
KappaB ras1 Antibody - Protocols

Provided below are standard protocols that you may find useful for product applications.

- [Western Blot](#)
- [Blocking Peptides](#)
- [Dot Blot](#)
- [Immunohistochemistry](#)
- [Immunofluorescence](#)
- [Immunoprecipitation](#)
- [Flow Cytometry](#)
- [Cell Culture](#)

KappaB ras1 Antibody - Images

Western blot analysis of KappaB ras1 in RAW264.7 cell lysate with KappaB ras1 antibody at (A) 0.5, (B) 1 and (C) 2 µg/mL.



Immunocytochemistry of KappaB-ras1 in RAW264.7 cells with KappaB-ras1 antibody at 1 µg/mL.

KappaB ras1 Antibody - Background

KappaB ras1 Antibody: KappaB ras-1 (κ B-ras-1) and kappaB-ras-2 are two small proteins that similar to Ras-like small GTPases that associate with I κ B (I κ B), an inhibitor of the transcription factor NF- κ B. I κ B exists in two homologous forms, I κ B-alpha and I κ B-beta, although I κ B-beta contains a unique 47-amino acid region within its ankyrin domain. While inactive I κ B-alpha-NF- κ B complexes

can shuttle in and out of the nucleus, I κ B-beta-NF- κ B complexes are retained exclusively in the cytoplasm. It is suggested that kappaB-ras proteins preferentially bind to the I κ B-beta form through this unique insert within the ankyrin region, thus modulating the cellular location of I κ B-beta and regulating the rate of degradation of I κ B-beta. This antibody is specific for kappaB-ras1 and has no cross-reactivity to kappaB-ras2.

KappaB ras1 Antibody - References

Fenwick C, Na SY, Voll RE, et al. A subclass of Ras proteins that regulate the degradation of IkappaB. Science 2000; 287:869-73.

Chen Y, Wu J and Ghosh G. KappaB-Ras binds to the unique insert within the ankyrin repeat domain of IkappaBbeta and regulates cytoplasmic retention of IkappaBbeta x NF-kappaB complexes. J. Biol. Chem. 2003; 278:23101-6.