

IL-22 Receptor Antibody
Catalog # ASC10152**Specification**

IL-22 Receptor Antibody - Product Information

Application	WB, IHC-P, IF, ICC, E
Primary Accession	Q8N6P7
Other Accession	NP_067081 , 58985
Reactivity	Human, Rat
Host	Rabbit
Clonality	Polyclonal
Isotype	IgG
Calculated MW	Predicted: 63 kDa

Application Notes	Observed: 62 kDa KDa IL-22 receptor antibody can be used for detection of IL-22 receptor by Western blot at 0.5-1 µg/mL. Antibody can also be used for immunocytochemistry starting at 10 µg/mL and immunohistochemistry starting at 5 µg/mL. For immunofluorescence start at 10 µg/mL.
-------------------	---

IL-22 Receptor Antibody - Additional Information

Gene ID **58985**

Other Names

IL-22 Receptor Antibody: IL22R, CRF2-9, IL22R1, IL22R, Interleukin-22 receptor subunit alpha-1, Cytokine receptor class-II member 9, IL-22 receptor subunit alpha-1, interleukin 22 receptor, alpha 1

Target/Specificity

IL-22 receptor antibody was raised against a synthetic peptide corresponding to amino acids near the amino terminus of human IL-22 receptor precursor. The immunogen is located within the first 50 amino acids of IL-22 Receptor.

Reconstitution & Storage

IL-22 Receptor antibody can be stored at 4°C for three months and -20°C, stable for up to one year. As with all antibodies care should be taken to avoid repeated freeze thaw cycles. Antibodies should not be exposed to prolonged high temperatures.

Precautions

IL-22 Receptor Antibody is for research use only and not for use in diagnostic or therapeutic procedures.

IL-22 Receptor Antibody - Protein Information

Name IL22RA1

Synonyms IL22R

Function

Component of the receptor for IL20, IL22 and IL24. Component of IL22 receptor formed by IL22RA1 and IL10RB enabling IL22 signaling via JAK/STAT pathways. IL22 also induces activation of MAPK1/MAPK3 and Akt kinases pathways. Component of one of the receptor for IL20 and IL24 formed by IL22RA1 and IL20RB also signaling through STATs activation. Mediates IL24 antiangiogenic activity as well as IL24 inhibitory effect on endothelial cell tube formation and differentiation.

Cellular Location

Cell membrane; Single-pass type I membrane protein

Tissue Location

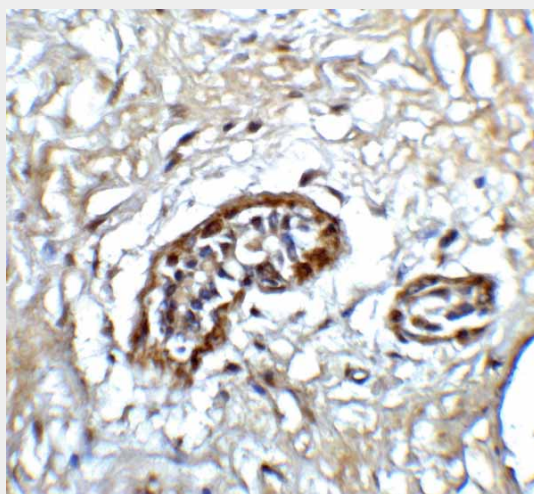
Expressed in colon, liver, lung, pancreas and kidney. No expression in immune cells such as monocytes, T-cells, and NK-cells. Expressed in keratinocytes of normal skin as well as in psoriatic skin lesion. Detected in normal blood brain barrier endothelial cells as well as in multiple sclerosis lesions; Strongly expressed on central nervous system vessels within infiltrated multiple sclerosis lesions. Overexpressed in synovial fluid cells from rheumatoid arthritis and spondyloarthropathy patients

IL-22 Receptor Antibody - Protocols

Provided below are standard protocols that you may find useful for product applications.

- [Western Blot](#)
- [Blocking Peptides](#)
- [Dot Blot](#)
- [Immunohistochemistry](#)
- [Immunofluorescence](#)
- [Immunoprecipitation](#)
- [Flow Cytometry](#)
- [Cell Culture](#)

IL-22 Receptor Antibody - Images



Immunohistochemistry of ATF6 in human breast tissue with ATF6 antibody at 5 µg/ml.

IL-22 Receptor Antibody - Background

IL-22 Receptor Antibody: A novel cytokine, designated IL-TIF for IL-10 related T cell-derived inducible factor and IL-22, was recently identified. The receptor for IL-22 (IL-22R, also termed CRF2-9 and IL-TIF-R1 chain) is a new member of the class II cytokine receptor family. IL-22R forms a complex with IL-10 receptor beta chain and mediates IL-22 signaling. IL-22 and its receptor activate JAK-STAT signaling pathway. IL22R is expressed in normal liver and kidney and their cell lines HepG2 and TK-10. A soluble form of IL-22 receptor, also termed IL-22 binding protein (IL-22BP) and IL-22 receptor-alpha 2 (IL-22RA2), was identified very recently. IL-22BP prevents binding of IL-22 to the functional cell surface IL-22R complex and neutralizes IL-22 activity. LPS induces IL-22 expression, which indicates the role of IL-22 in inflammatory response.

IL-22 Receptor Antibody - References

Dumoutier L, Louahed J, Renauld JC. Cloning and characterization of IL-10-related T cell-derived inducible factor (IL-TIF), a novel cytokine structurally related to IL-10 and inducible by IL-9. *J Immunol.* 2000;164(4):1814-9.

Dumoutier L, Van Roost E, Colau D, Renauld JC. Human interleukin-10-related T cell-derived inducible factor: molecular cloning and functional characterization as an hepatocyte-stimulating factor. *Proc Natl Acad Sci USA.* 2000 ;97(18):10144-9.

Xie MH, Aggarwal S, Ho WH, et al. Interleukin (IL)-22, a novel human cytokine that signals through the interferon receptor-related proteins CRF2-4 and IL-22R. *J Biol Chem.* 2000;275(40):31335-9.

Kotenko SV, Izotova LS, Mirochnitchenko OV, et al. Identification of the functional interleukin-22 (IL-22) receptor complex: *J Biol Chem.* 2001;276(4):2725-32.