

**ILP-2 Antibody**  
**Catalog # ASC10166****Specification**

---

**ILP-2 Antibody - Product Information**

Application	WB, ICC, IF
Primary Accession	<a href="#">Q96P09</a>
Other Accession	<a href="#">NP_203127</a> , <a href="#">44680139</a>
Reactivity	Human, Mouse, Rat
Host	Rabbit
Clonality	Polyclonal
Isotype	IgG
Calculated MW	33 kDa KDa
Application Notes	ILP-2 antibody can be used for detection of ILP-2 by Western blot at 1 µg/mL. A band at approximately 33 kDa can be detected. Antibody can also be used for immunocytochemistry starting at 10 µg/mL. For immunofluorescence start at 20 µg/mL.

**ILP-2 Antibody - Additional Information**Gene ID **112401****Other Names**

ILP-2 Antibody: ILP2, ILP-2, hILP2, ILP2, Baculoviral IAP repeat-containing protein 8, Inhibitor of apoptosis-like protein 2, IAP-like protein 2, baculoviral IAP repeat-containing 8

**Target/Specificity**

BIRC8;

**Reconstitution & Storage**

ILP-2 antibody can be stored at 4°C for three months and -20°C, stable for up to one year. As with all antibodies care should be taken to avoid repeated freeze thaw cycles. Antibodies should not be exposed to prolonged high temperatures.

**Precautions**

ILP-2 Antibody is for research use only and not for use in diagnostic or therapeutic procedures.

**ILP-2 Antibody - Protein Information****Name** BIRC8**Synonyms** ILP2**Function**

Protects against apoptosis mediated by BAX.

**Cellular Location**

Cytoplasm.

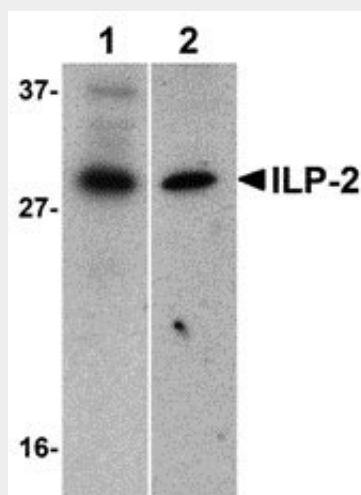
**Tissue Location**

Testis specific in normal tissues.

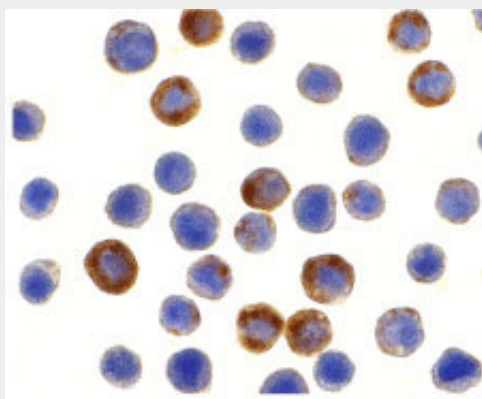
**ILP-2 Antibody - Protocols**

Provided below are standard protocols that you may find useful for product applications.

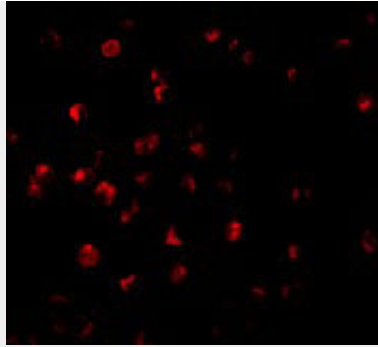
- [Western Blot](#)
- [Blocking Peptides](#)
- [Dot Blot](#)
- [Immunohistochemistry](#)
- [Immunofluorescence](#)
- [Immunoprecipitation](#)
- [Flow Cytometry](#)
- [Cell Culture](#)

**ILP-2 Antibody - Images**

Western blot analysis of ILP-2 expression in human HepG2 (lane 1) and MOLT4 (lane 2) cell lysates with ILP-2 antibody at 1 µg/mL.



Immunocytochemistry of ILP-2 in HepG2 cells with ILP-2 antibody at 10 µg/mL.



Immunofluorescence of ILP-2 in HepG2 cells with ILP-2 antibody at 20 µg/mL.

### **ILP-2 Antibody - Background**

ILP-2 Antibody: Apoptosis, or programmed cell death, is related to many diseases, such as cancer. Apoptosis is triggered by a variety of stimuli including members in the TNF family and prevented by the inhibitor of apoptosis (IAP) proteins. IAP proteins form a conserved gene family including IAP, XIAP/ILP-1/MIHA, and Livin/KIAP that bind to and inhibits specific proteases. A novel member in the IAP protein family was recently identified and designated ILP-2 for IAP-like protein-2. ILP-2 has high homology to ILP-1, but is encoded by a distinct gene that is solely expressed in testis of tested normal human tissues. ILP-2, unlike ILP-1, has no inhibitory effect on Fas and TNF induced apoptosis, but potently inhibits apoptosis induced by overexpression of Bax or by coexpression of caspase-9 with Apaf-1. ILP-2 interacts with the processed caspase-9. These results suggest that ILP-2 is a novel IAP family member with restricted specificity for caspase-9.

### **ILP-2 Antibody - References**

Richter BW, Mir SS, Eiben LJ, Lewis J, Reffey SB, Frattini A, Tian L, Frank S, Youle RJ, Nelson DL, Notarangelo LD, Vezzoni P, Fearnhead HO, Duckett CS. Molecular cloning of ILP-2, a novel member of the inhibitor of apoptosis protein family. *Mol Cell Biol.* 2001;21(13):4292-301.