

NALP1 Antibody
Catalog # ASC10173**Specification****NALP1 Antibody - Product Information**

Application	WB, IF, ICC, E
Primary Accession	Q9C000
Other Accession	AAG30288 , 11096303
Reactivity	Human
Host	Rabbit
Clonality	Polyclonal
Isotype	IgG
Application Notes	NALP1 antibody can be used for detection of NALP1 by Western blot at 1 to 4 µg/mL. Antibody can also be used for immunocytochemistry starting at 10 µg/mL. For immunofluorescence start at 20 µg/mL.

NALP1 Antibody - Additional InformationGene ID **22861****Other Names**

NALP1 Antibody: NAC, CARD7, CITED, NALP1, SLEV1, DEFCAP, PP1044, VAMAS1, CLR17.1, DEFCAP-L/S, KIAA0926, NAC, NACHT, LRR and PYD domains-containing protein 1, Caspase recruitment domain-containing protein 7, NLR family, pyrin domain containing 1

Target/Specificity

NLRP1;

Reconstitution & Storage

NALP1 antibody can be stored at 4°C for three months and -20°C, stable for up to one year. As with all antibodies care should be taken to avoid repeated freeze thaw cycles. Antibodies should not be exposed to prolonged high temperatures.

Precautions

NALP1 Antibody is for research use only and not for use in diagnostic or therapeutic procedures.

NALP1 Antibody - Protein Information**Name** NLRP1 {ECO:0000303|PubMed:22665479, ECO:0000312|HGNC:HGNC:14374}**Function**

Acts as the sensor component of the NLRP1 inflammasome, which mediates inflammasome activation in response to various pathogen- associated signals, leading to subsequent pyroptosis (PubMed:12191486, PubMed:17349957, PubMed:22665479),

PubMed:27662089, PubMed:31484767, PubMed:33093214, PubMed:33410748, PubMed:33731929, PubMed:33731932, PubMed:35857590). Inflammasomes are supramolecular complexes that assemble in the cytosol in response to pathogens and other damage-associated signals and play critical roles in innate immunity and inflammation (PubMed:12191486, PubMed:17349957, PubMed:22665479). Acts as a recognition receptor (PRR): recognizes specific pathogens and other damage-associated signals, such as cleavage by some human enteroviruses and rhinoviruses, double-stranded RNA, UV-B irradiation, or Val-boroPro inhibitor, and mediates the formation of the inflammasome polymeric complex composed of NLRP1, CASP1 and PYCARD/ASC (PubMed:12191486, PubMed:17349957, PubMed:22665479, PubMed:25562666, PubMed:30096351, PubMed:30291141, PubMed:33093214, PubMed:33243852, PubMed:33410748, PubMed:35857590). In response to pathogen-associated signals, the N-terminal part of NLRP1 is degraded by the proteasome, releasing the cleaved C-terminal part of the protein (NACHT, LRR and PYD domains-containing protein 1, C-terminus), which polymerizes and associates with PYCARD/ASC to initiate the formation of the inflammasome complex: the NLRP1 inflammasome recruits pro-caspase-1 (proCASP1) and promotes caspase-1 (CASP1) activation, which subsequently cleaves and activates inflammatory cytokines IL1B and IL18 and gasdermin-D (GSDMD), leading to pyroptosis (PubMed:12191486, PubMed:17349957, PubMed:22665479, PubMed:32051255, PubMed:33093214). In the absence of GSDMD expression, the NLRP1 inflammasome is able to recruit and activate CASP8, leading to activation of gasdermin-E (GSDME) (PubMed:33852854, PubMed:35594856). Activation of NLRP1 inflammasome is also required for HMGB1 secretion; the active cytokines and HMGB1 stimulate inflammatory responses (PubMed:22801494). Binds ATP and shows ATPase activity (PubMed:11113115, PubMed:15212762, PubMed:33243852). Plays an important role in antiviral immunity and inflammation in the human airway epithelium (PubMed:33093214). Specifically recognizes a number of pathogen-associated signals: upon infection by human rhinoviruses 14 and 16 (HRV-14 and HRV-16), NLRP1 is cleaved and activated which triggers NLRP1-dependent inflammasome activation and IL18 secretion (PubMed:33093214). Positive-strand RNA viruses, such as Semliki forest virus and long dsRNA activate the NLRP1 inflammasome, triggering IL1B release in a NLRP1-dependent fashion (PubMed:33243852). Acts as a direct sensor for long dsRNA and thus RNA virus infection (PubMed:33243852). May also be activated by muramyl dipeptide (MDP), a fragment of bacterial peptidoglycan, in a NOD2-dependent manner (PubMed:18511561). The NLRP1 inflammasome is also activated in response to UV-B irradiation causing ribosome collisions: ribosome collisions cause phosphorylation and activation of NLRP1 in a MAP3K20-dependent manner, leading to pyroptosis (PubMed:35857590).

Cellular Location

Cytoplasm, cytosol. Cytoplasm. Nucleus. Note=Nucleocytoplasmic distribution in lymphoid organs (probably in T-cells) and in neurons. In epithelial cells, predominantly cytoplasmic. [NACHT, LRR and PYD domains-containing protein 1, N-terminus]: Nucleus. Note=(Microbial infection) Interaction with human herpes virus 8/HHV-8 proteins ORF45 promotes translocation of the N-terminal part of NLRP1 into the nucleus, relieving autoinhibition of the NLRP1 inflammasome and leading to its activation.

Tissue Location

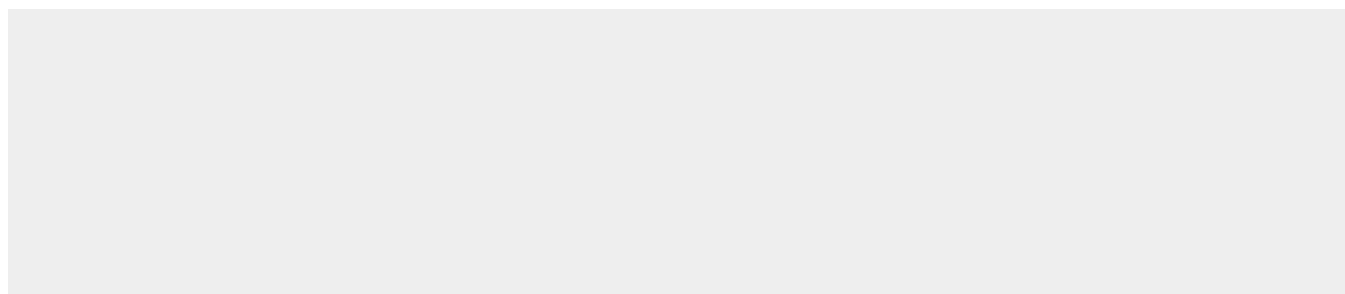
Widely expressed (PubMed:11113115, PubMed:17164409). Abundantly expressed in primary immune cells (isoform 1 and isoform 2), including in neutrophils, monocytes/macrophages, dendritic cells (mostly Langerhans cells), and B- and T-lymphocytes (at protein level) (PubMed:15285719, PubMed:17164409). Strongly expressed in epithelial cells lining the glandular epithelium, such as that of the gastrointestinal tract (stomach, small intestine, colon), the respiratory tract (trachea and bronchi), and the endometrial and endocervical glands, gallbladder, prostate, and breast (at protein level). In testis, expressed in spermatogonia and primary spermatocytes, but not in Sertoli cells (at protein level). In the brain, expressed in neurons, in particular in pyramidal ones and in oligodendrocytes, but not detected in microglia (at protein level) (PubMed:17164409). Expressed in adult and fetal ocular tissues, including in adult and 24-week old fetal choroid, sclera, cornea, and optic nerve, as well as in adult retina and fetal retina/retinal pigment epithelium (PubMed:23349227). Highly expressed in the skin throughout the epidermis and in dermal fibroblasts, in both glabrous skin and plantar skin. It is detected in keratinocytes, but not in melanocytes. Expressed in epidermal appendages such as hair follicles (PubMed:27662089).

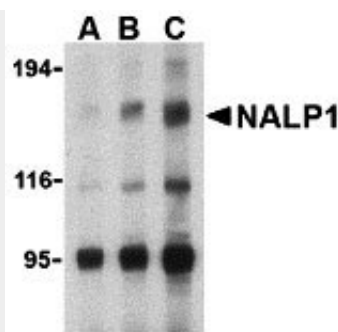
NALP1 Antibody - Protocols

Provided below are standard protocols that you may find useful for product applications.

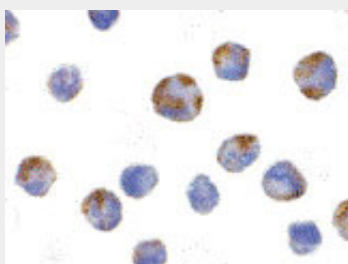
- [Western Blot](#)
- [Blocking Peptides](#)
- [Dot Blot](#)
- [Immunohistochemistry](#)
- [Immunofluorescence](#)
- [Immunoprecipitation](#)
- [Flow Cytometry](#)
- [Cell Culture](#)

NALP1 Antibody - Images

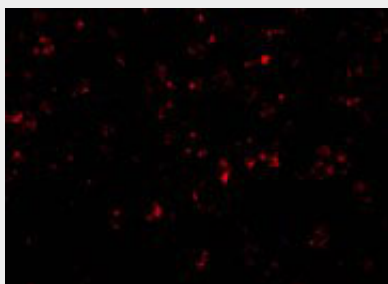




Western blot analysis of NALP1 in U937 cell lysate with NALP1 antibody at (A) 1, (B) 2 and (C) 4 $\mu\text{g/mL}$.



Immunocytochemistry of NALP1 in K562 cells with NALP1 antibody at 10 $\mu\text{g/mL}$.



Immunofluorescence of NALP1 in K562 cells with NALP1 antibody at 20 $\mu\text{g/mL}$.

NALP1 Antibody - Background

NALP1 Antibody: NALP1 belongs to a family of cytoplasmic proteins that have been implicated in cell responses to apoptotic and inflammatory stimuli. It contains a caspase recruitment domain (CARD) in addition to a NACHT domain and leucine rich repeat (LRR). This protein interacts strongly with caspase 2 and weakly with caspase 9, as well as with Apaf-1. Transient overexpression of this gene in cultured cells was sufficient to induce apoptosis. NALP1 mRNA and protein expression levels in myeloid leukemia cells are increased following CREB (cAMP-response element binding protein) activation, suggesting that NALP1 may contribute to modulate the response of these cells to pro-inflammatory stimuli. Multiple alternatively spliced transcript variants encoding distinct isoforms have been found for NALP1.

NALP1 Antibody - References

NALP1 antibody can be stored at 4°C, stable for one year. Tschopp J, Martinon F, and Burns K. NALPs: a novel protein family involved in inflammation. *Nat. Rev. Mol. Cell Biol.* 2003; 4:95-104.
 Chu ZL, Pio F, Xie Z, et al. A novel enhancer of the Apaf1 apoptosome involved in cytochrome c-dependent caspase activation and apoptosis. *J. Biol. Chem.* 2001; 276:9239-45.
 Hlaing T, Guo RF, Dilley KA, et al. Molecular cloning and characterization of DEFCAP-L and -S, two isoforms of a novel member of the Ced-4 family of apoptosis proteins. *J. Biol. Chem.* 2001; 276:9230-8.

Sanz C, Calasanz MJ, Andreu E, et al. NALP1 is a transcriptional target for cAMP-response-element-binding protein (CREB) in myeloid leukemia cells. *Biochem. J.* 2004; 384:281-6.