

ACE2 Antibody

Catalog # ASC10222

Specification

ACE2 Antibody - Product Information

Application	WB, IHC, IF
Primary Accession	Q9BYF1
Other Accession	NP_068576 , 11225609
Reactivity	Human
Host	Rabbit
Clonality	Polyclonal
Isotype	IgG
Application Notes	ACE2 antibody can be used for the detection of ACE2 by Western blot at 1 µg/mL. A 90 kDa band can be detected. Antibody can also be used for immunohistochemistry starting at 2 µg/mL. For immunofluorescence start at 10 µg/mL.

ACE2 Antibody - Additional Information

Gene ID 59272
Other Names
ACE2 Antibody: ACEH, Angiotensin-converting enzyme 2, ACE-related carboxypeptidase, ACEH, angiotensin I converting enzyme (peptidyl-dipeptidase A) 2

Target/Specificity

ACE2; Anti-ACE2 has no cross response to ACE1.

Reconstitution & Storage

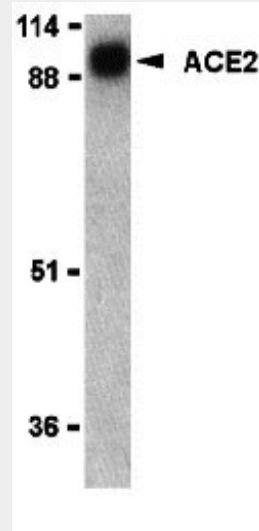
ACE2 antibody can be stored at 4°C for three months and -20°C, stable for up to one year. As with all antibodies care should be taken to avoid repeated freeze thaw cycles. Antibodies should not be exposed to prolonged high temperatures.

Precautions

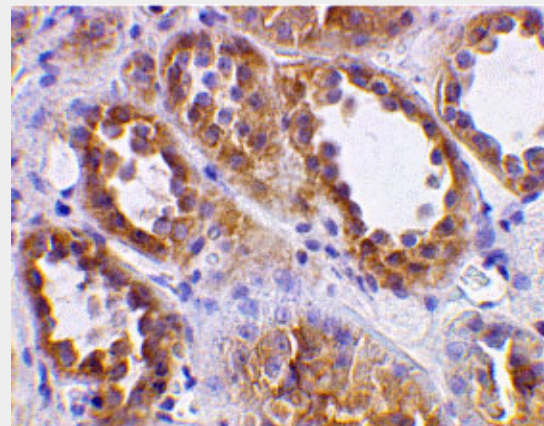
ACE2 Antibody is for research use only and not for use in diagnostic or therapeutic procedures.

ACE2 Antibody - Protein Information

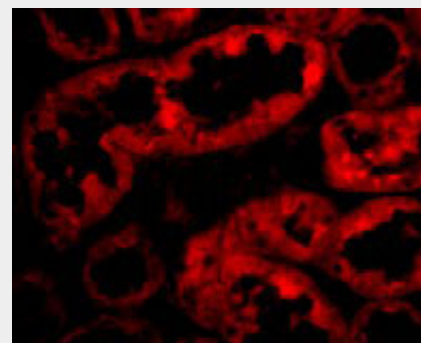
Name ACE2 ([HGNC:13557](#))



Western blot analysis of ACE2 in human kidney lysate with ACE2 antibody at 1 µg/mL.



Immunohistochemical staining of human kidney cells using ACE2 antibody at 2 µg/mL.



Immunofluorescence of ACE2 in Human Kidney cells with ACE2 antibody at 10 µg/mL.

Function

Essential counter-regulatory carboxypeptidase of the renin-angiotensin hormone system that is a critical regulator of blood volume, systemic vascular resistance, and thus cardiovascular homeostasis (PubMed: [27217402](http://www.uniprot.org/citations/27217402)). Converts angiotensin I to angiotensin 1-9, a nine-amino acid peptide with anti-hypertrophic effects in cardiomyocytes, and angiotensin II to angiotensin 1-7, which then acts as a beneficial vasodilator and anti-proliferation agent, counterbalancing the actions of the vasoconstrictor angiotensin II (PubMed: [10969042](http://www.uniprot.org/citations/10969042)), PubMed: [10924499](http://www.uniprot.org/citations/10924499), PubMed: [11815627](http://www.uniprot.org/citations/11815627), PubMed: [19021774](http://www.uniprot.org/citations/19021774), PubMed: [14504186](http://www.uniprot.org/citations/14504186)). Also removes the C-terminal residue from three other vasoactive peptides, neurotensin, kinetensin, and des-Arg bradykinin, but is not active on bradykinin (PubMed: [10969042](http://www.uniprot.org/citations/10969042)), PubMed: [11815627](http://www.uniprot.org/citations/11815627)). Also cleaves other biological peptides, such as apelin (apelin-13, [Pyr1]apelin-13, apelin-17, apelin-36), casomorphins (beta-casomorphin-7, neocasomorphin) and dynorphin A with high efficiency (PubMed: [11815627](http://www.uniprot.org/citations/11815627)), PubMed: [27217402](http://www.uniprot.org/citations/27217402), PubMed: [28293165](http://www.uniprot.org/citations/28293165)). In addition, ACE2 C-terminus is homologous to collectrin and is responsible for the trafficking of the neutral amino acid transporter SL6A19 to the plasma membrane of gut epithelial cells via direct interaction, regulating its expression on the cell surface and its catalytic activity (PubMed: [18424768](http://www.uniprot.org/citations/18424768)), PubMed: [19185582](http://www.uniprot.org/citations/19185582)).

Cellular Location

[Processed angiotensin-converting enzyme 2]: Secreted

Tissue Location

Expressed in endothelial cells from small and large arteries, and in arterial smooth muscle cells (at protein level) (PubMed:15141377). Expressed in lung alveolar epithelial cells, enterocytes of the small intestine, Leydig

ACE2 Antibody - Background

ACE2 Antibody: Angiotensin-converting enzyme 2 (ACE2) plays a central role in vascular, renal, and myocardial physiology. In contrast to its homolog ACE, ACE2 expression is restricted to heart, kidney, and testis. Recently, ACE2 has also been shown to be a functional receptor of the SARS coronavirus. The normal function of ACE2 is to convert the inactive vasoconstrictor angiotensin I (AngI) to Ang1-9 and the active form AngII to Ang1-7, unlike ACE, which converts AngI to AngII. While the role of these vasoactive peptides is not well understood, lack of ACE2 expression in ace2-/ace2- mice leads to severely reduced cardiac contractility, indicating its importance in regulating heart function.

ACE2 Antibody - References

Donoghue M, Hsieh F, Baronas E, et al. A novel angiotensin-converting enzyme-related carboxypeptidase (ACE2) converts angiotensin I to angiotensin 1-9. *Circ. Res.* 2000;87:1-9.
Tipnis SR, Hooper NM, Hyde R, et al. A human homolog of angiotensin-converting enzyme. Cloning and functional expression as a captopril-insensitive carboxypeptidase. *J Biol. Chem.* 2000;275:33238-43.
Li W, Moore MJ, Vasileva N, et al. Angiotensin-converting enzyme 2 is a functional receptor for the SARS coronavirus. *Nature* 2003;426:450-4.
Crackower MA, Sarao R, Oudit GY, et al. Angiotensin-converting enzyme 2 is an essential regulator of heart function. *Nature* 2002;417:822-8.

cells and Sertoli cells (at protein level) (PubMed:15141377). Expressed in the renal proximal tubule and the small intestine (at protein level) (PubMed:18424768) Expressed in heart, kidney, testis, and gastrointestinal system (PubMed:10969042, PubMed:10924499, PubMed:15231706, PubMed:12459472, PubMed:15671045).

ACE2 Antibody - Protocols

Provided below are standard protocols that you may find useful for product applications.

- [Western Blot](#)
- [Blocking Peptides](#)
- [Dot Blot](#)
- [Immunohistochemistry](#)
- [Immunofluorescence](#)
- [Immunoprecipitation](#)
- [Flow Cytometry](#)
- [Cell Culture](#)