

**CTRP3 Antibody**  
**Catalog # ASC10336****Specification**

---

**CTRP3 Antibody - Product Information**

Application	WB, IHC, IF
Primary Accession	<a href="#">Q9BXJ4</a>
Other Accession	<a href="#">NP_852100</a> , <a href="#">62739183</a>
Reactivity	Human, Mouse
Host	Rabbit
Clonality	Polyclonal
Isotype	IgG
Calculated MW	Predicted: 35 kDa

Application Notes	<b>Observed: 36 kDa KDa</b> <b>CTRP3 antibody can be used for the detection of CTRP3 by Western blot at 1 µg/mL. Antibody can also be used for immunohistochemistry starting at 2 µg/mL. For immunofluorescence start at 10 µg/mL.</b>
-------------------	---

**CTRP3 Antibody - Additional Information**

Gene ID **114899**

**Other Names**

CTRP3 Antibody: CORS, CORCS, CTRP3, CORS26, C1ATNF3, CORS-26, UNQ753/PRO1484, Complement C1q tumor necrosis factor-related protein 3, Collagenous repeat-containing sequence 26 kDa protein, C1q and tumor necrosis factor related protein 3

**Target/Specificity**

C1QTNF3; Multiple isoforms of CTRP3 are known to exist. CTRP3 antibody is predicted to not recognize other members of the CTRP protein family.

**Reconstitution & Storage**

CTRP3 antibody can be stored at 4°C for three months and -20°C, stable for up to one year. As with all antibodies care should be taken to avoid repeated freeze thaw cycles. Antibodies should not be exposed to prolonged high temperatures.

**Precautions**

CTRP3 Antibody is for research use only and not for use in diagnostic or therapeutic procedures.

**CTRP3 Antibody - Protein Information**

**Name** C1QTNF3

**Synonyms** CTRP3

**Cellular Location**

Secreted.

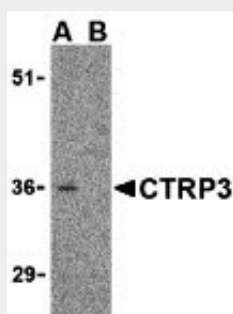
**Tissue Location**

Expressed in colon and small intestine.

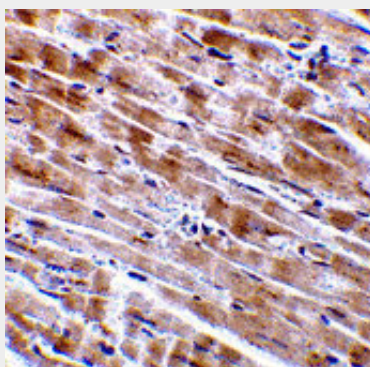
**CTRP3 Antibody - Protocols**

Provided below are standard protocols that you may find useful for product applications.

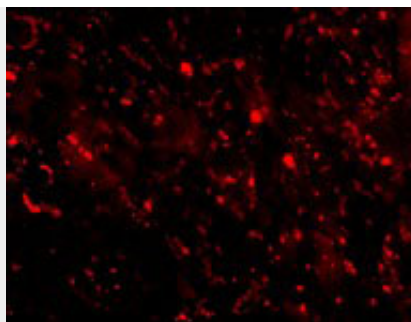
- [Western Blot](#)
- [Blocking Peptides](#)
- [Dot Blot](#)
- [Immunohistochemistry](#)
- [Immunofluorescence](#)
- [Immunoprecipitation](#)
- [Flow Cytometry](#)
- [Cell Culture](#)

**CTRP3 Antibody - Images**

Western blot analysis of CTRP3 in mouse heart cell lysate with CTRP3 antibody at 1  $\mu$ g/mL in the (A) absence and (B) presence of blocking peptide.



Immunohistochemistry of CTRP3 in mouse heart tissue with CTRP3 antibody at 2  $\mu$ g/mL.



Immunofluorescence of CTRP3 in Mouse Heart tissue with CTRP3 antibody at 10 µg/mL.

### **CTRP3 Antibody - Background**

CTRP3 Antibody: Adipose tissue of an organism plays a major role in regulating physiologic and pathologic processes such as metabolism and immunity by producing and secreting a variety of bioactive molecules termed adipokines. One highly conserved family of adipokines is adiponectin/ACRP30 and its structural and functional paralogs, the C1q/tumor necrosis factor- $\alpha$ -related proteins (CTRPs) 1-7. Unlike adiponectin, which is expressed exclusively by differentiated adipocytes, the CTRPs are expressed in a wide variety of tissues. An analysis of the crystal structure of adiponectin revealed a structural and evolutionary link between TNF and C1q-containing proteins, suggesting that these proteins arose from a common ancestral innate immunity gene. It has been suggested that CTRP3 may play a role in skeletal development.

### **CTRP3 Antibody - References**

Fantuzzi G. Adipose tissue, adipokines, and inflammation. *J. Allergy Clin. Immunol.* 2005; 115:911-9.

Tsao T-S, Lodish HF, and Fruebis J. ACRP30, a new hormone controlling fat and glucose metabolism. *Euro. J. Pharmacol.* 2002; 440:213-21.

Wong GW, Wang J, Hug C, et al. A family of Acrp30/ adiponectin structural and functional paralogs. *Proc. Natl. Acad. Sci. USA* 2004; 101:10302-7.

Shapiro L and Scherer PE. The crystal structure of a complement-1q family protein suggests an evolutionary link to tumor necrosis factor. *Curr. Biol.* 1998; 8:335-8.