

CTRP6 Antibody
Catalog # ASC10341**Specification**

CTRP6 Antibody - Product Information

Application	WB, IF, ICC, E
Primary Accession	Q9BXI9
Other Accession	AAQ88740 , 37181873
Reactivity	Human, Mouse
Host	Rabbit
Clonality	Polyclonal
Isotype	IgG
Application Notes	CTRP6 antibody can be used for the detection of CTRP6 by Western blot at 1 and 2 µg/mL. Antibody can also be used for immunohistochemistry starting at 10 µg/mL. For immunofluorescence start at 20 µg/mL.

CTRP6 Antibody - Additional InformationGene ID **114904****Other Names**

CTRP6 Antibody: CTFP6, CTRP6, ZACRP6, UNQ581/PRO1151, Complement C1q tumor necrosis factor-related protein 6, C1q and tumor necrosis factor related protein 6

Target/Specificity

C1QTNF6; These proteins often migrate in SDS-PAGE at positions other than their predicted size.

Reconstitution & Storage

CTRP6 antibody can be stored at 4°C for three months and -20°C, stable for up to one year. As with all antibodies care should be taken to avoid repeated freeze thaw cycles. Antibodies should not be exposed to prolonged high temperatures.

Precautions

CTRP6 Antibody is for research use only and not for use in diagnostic or therapeutic procedures.

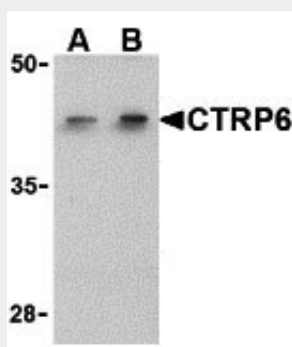
CTRP6 Antibody - Protein Information**Name** C1QTNF6**Synonyms** CTRP6**Cellular Location**
Secreted.

CTRP6 Antibody - Protocols

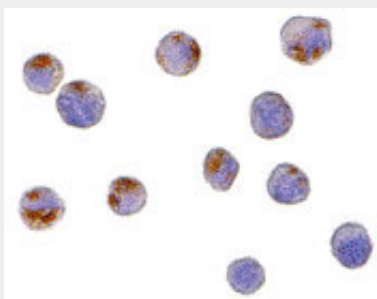
Provided below are standard protocols that you may find useful for product applications.

- [Western Blot](#)
- [Blocking Peptides](#)
- [Dot Blot](#)
- [Immunohistochemistry](#)
- [Immunofluorescence](#)
- [Immunoprecipitation](#)
- [Flow Cytometry](#)
- [Cell Culture](#)

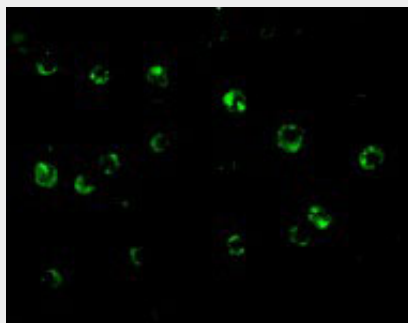
CTRP6 Antibody - Images



Western blot analysis of CTRP6 in HeLa cell lysate with CTRP6 antibody at (A) 1 and (B) 2 μ g/mL.



Immunocytochemistry of CTRP6 in HeLa cells with CTRP6 antibody at 10 μ g/mL.



Immunofluorescence of CTRP6 in HeLa cells with CTRP6 antibody at 20 μ g/mL.

CTRP6 Antibody - Background

CTRP6 Antibody: Adipose tissue of an organism plays a major role in regulating physiologic and pathologic processes such as metabolism and immunity by producing and secreting a variety of

bioactive molecules termed adipokines. One highly conserved family of adipokines is adiponectin/ACRP30 and its structural and functional paralogs, the C1q/tumor necrosis factor- α -related proteins (CTRPs) 1-7. Unlike adiponectin, which is expressed exclusively by differentiated adipocytes, the CTRPs are expressed in a wide variety of tissues. These proteins are thought to act mainly on liver and muscle tissue to control glucose and lipid metabolism. An analysis of the crystal structure of adiponectin revealed a structural and evolutionary link between TNF and C1q-containing proteins, suggesting that these proteins arose from a common ancestral innate immunity gene. CTRP6 contains at least 4 glycosylation motifs, suggesting that CTRP6 may be highly post-translationally modified.

CTRP6 Antibody - References

Fantuzzi G. Adipose tissue, adipokines, and inflammation. *J. Allergy Clin. Immunol.* 2005; 115:911-9.

Tsao T-S, Lodish HF, and Fruebis J. ACRP30, a new hormone controlling fat and glucose metabolism. *Euro. J. Pharmacol.* 2002; 440:213-21.

Wong GW, Wang J, Hug C, et al. A family of Acrp30/ adiponectin structural and functional paralogs. *Proc. Natl. Acad. Sci. USA* 2004; 101:10302-7.

Shapiro L and Scherer PE. The crystal structure of a complement-1q family protein suggests an evolutionary link to tumor necrosis factor. *Curr. Biol.* 1998; 8:335-8.