

IL-31 Antibody
Catalog # ASC10397**Specification**

IL-31 Antibody - Product Information

Application	WB, IHC-P, E
Primary Accession	Q6EAL8
Other Accession	AAS82846 , 46241139
Reactivity	Mouse
Host	Rabbit
Clonality	Polyclonal
Isotype	IgG
Application Notes	IL-31 antibody can be used for the detection of IL-31 by Western blot at 2.5 - 10 µg/mL. Antibody can also be used for immunohistochemistry starting at 10 µg/mL.

IL-31 Antibody - Additional Information

Gene ID	76399
Other Names	
IL-31 Antibody: 1700013B14Rik, Interleukin-31, IL-31, interleukin 31	

Target/Specificity
IL31;**Reconstitution & Storage**

IL-31 antibody can be stored at 4°C for three months and -20°C, stable for up to one year. As with all antibodies care should be taken to avoid repeated freeze thaw cycles. Antibodies should not be exposed to prolonged high temperatures.

Precautions

IL-31 Antibody is for research use only and not for use in diagnostic or therapeutic procedures.

IL-31 Antibody - Protein Information**Name** IL31**Function**

Activates STAT3 and possibly STAT1 and STAT5 through the IL31 heterodimeric receptor composed of IL31RA and OSMR (PubMed:<[a href="http://www.uniprot.org/citations/15184896"](http://www.uniprot.org/citations/15184896) target="_blank">15184896). May function in skin immunity (PubMed:<[a href="http://www.uniprot.org/citations/15184896"](http://www.uniprot.org/citations/15184896) target="_blank">15184896). Enhances myeloid progenitor cell survival in vitro (PubMed:<[a href="http://www.uniprot.org/citations/17379091"](http://www.uniprot.org/citations/17379091) target="_blank">17379091). Induces RETNLA and serum amyloid A protein expression in macrophages (PubMed:<[a href="http://www.uniprot.org/citations/25847241"](http://www.uniprot.org/citations/25847241) target="_blank">25847241).

Cellular Location

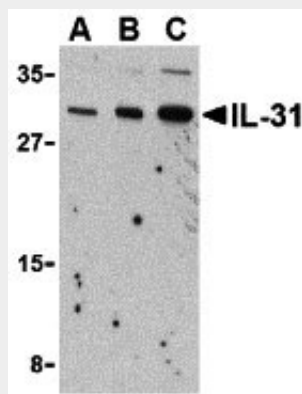
Secreted.

IL-31 Antibody - Protocols

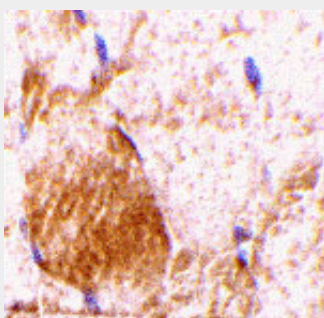
Provided below are standard protocols that you may find useful for product applications.

- [Western Blot](#)
- [Blocking Peptides](#)
- [Dot Blot](#)
- [Immunohistochemistry](#)
- [Immunofluorescence](#)
- [Immunoprecipitation](#)
- [Flow Cytometry](#)
- [Cell Culture](#)

IL-31 Antibody - Images



Western blot analysis of IL-31 in RAW264.7 cell lysate with IL-31 antibody at (A) 2.5, (B) 5 and (C) 10 µg/mL.



Immunohistochemistry of IL-31 in rat skeletal muscle tissue with IL-31 antibody at 10 µg/mL.

IL-31 Antibody - Background

IL-31 Antibody: Interleukin-31 (IL-31) is a recently discovered T-cell cytokine closely related to IL-6 type cytokines and is preferentially produced by T helper type 2 cells. IL-31 activity is mediated through the ligand-induced oligomerization of a dimeric receptor complex containing IL-31 receptor A and oncostatin M receptor. In response to IL-31 binding, these proteins activate the JAK/STAT and the AKT signaling pathways. RNA levels of IL-31 receptor A and oncostatin M receptor are induced in activated monocytes but are expressed constitutively in epithelial cells. IL-31, when

overexpressed in transgenic mice, results in the development of pruritis, alopecia, and skin lesions and in humans may result in atopic dermatitis, suggesting that IL-31 may represent a novel target for antipruritic drug development.

IL-31 Antibody - References

Dillon SR, Sprecher C, Hammond A, et al. Interleukin 31, a cytokine produced by activated T cells, induces dermatitis in mice. *Nat. Immunol.* 2004; 5:752-60.

Dreuw A, Radtke S, Pflanz S, et al. Characterization of the signaling capacities of the novel gp130-like cytokine receptor. *J. Biol. Chem.* 2004; 279:36112-20.

Diveu C, Lak-Hal AH, Froger J, et al. Predominant expression of the long isoform of GP130-like (GPL) receptor is required for interleukin-31 signaling. *Eur. Cytokine Netw.* 2004; 15:291-302.

Bilsborough J, Leung DY, Maurer M, et al. IL-31 is associated with cutaneous lymphocyte antigen-positive skin homing T cells in patients with atopic dermatitis. *J. Allergy Clin. Immunol.* 2006; 117:418-25.