

**BANF1 Antibody**  
**Catalog # ASC10491****Specification**

---

**BANF1 Antibody - Product Information**

Application	WB, IF, E
Primary Accession	<a href="#">O75531</a>
Other Accession	<a href="#">AAH05942</a> , <a href="#">13543577</a>
Reactivity	Human, Mouse, Rat
Host	Rabbit
Clonality	Polyclonal
Isotype	IgG
Application Notes	<b>BANF1 antibody can be used for detection of BANF1 by Western blot at 0.5 - 2 µg/mL. Despite its predicted molecular weight, BANF1 often migrates at a higher size in SDS-PAGE. Antibody can also be used for immunofluorescence starting at 20 µg/mL.</b>

**BANF1 Antibody - Additional Information**Gene ID **8815****Other Names**

BANF1 Antibody: BAF, NGPS, BCRP1, D14S1460, BAF, BCRG1, Barrier-to-autointegration factor, Breakpoint cluster region protein 1, barrier to autointegration factor 1

**Target/Specificity**

BANF1;

**Reconstitution & Storage**

BANF1 antibody can be stored at 4°C for three months and -20°C, stable for up to one year. As with all antibodies care should be taken to avoid repeated freeze thaw cycles. Antibodies should not be exposed to prolonged high temperatures.

**Precautions**

BANF1 Antibody is for research use only and not for use in diagnostic or therapeutic procedures.

**BANF1 Antibody - Protein Information**

**Name** BANF1 {ECO:0000303|PubMed:21549337, ECO:0000312|HGNC:HGNC:17397}

**Function**

Non-specific DNA-binding protein that plays key roles in mitotic nuclear reassembly, chromatin organization, DNA damage response, gene expression and intrinsic immunity against foreign DNA (PubMed:<a href="http://www.uniprot.org/citations/10908652" target="\_blank">10908652</a>, PubMed:<a href="http://www.uniprot.org/citations/11792822" target="\_blank">11792822</a>, PubMed:<a href="http://www.uniprot.org/citations/12163470" target="\_blank">12163470</a>, PubMed:<a href="http://www.uniprot.org/citations/18005698" target="\_blank">18005698</a>),

PubMed:<a href="http://www.uniprot.org/citations/25991860" target="\_blank">25991860</a>, PubMed:<a href="http://www.uniprot.org/citations/28841419" target="\_blank">28841419</a>, PubMed:<a href="http://www.uniprot.org/citations/31796734" target="\_blank">31796734</a>, PubMed:<a href="http://www.uniprot.org/citations/32792394" target="\_blank">32792394</a>). Contains two non-specific double-stranded DNA (dsDNA)-binding sites which promote DNA cross-bridging (PubMed:<a href="http://www.uniprot.org/citations/9465049" target="\_blank">9465049</a>). Plays a key role in nuclear membrane reformation at the end of mitosis by driving formation of a single nucleus in a spindle-independent manner (PubMed:<a href="http://www.uniprot.org/citations/28841419" target="\_blank">28841419</a>). Transiently cross-bridges anaphase chromosomes via its ability to bridge distant DNA sites, leading to the formation of a dense chromatin network at the chromosome ensemble surface that limits membranes to the surface (PubMed:<a href="http://www.uniprot.org/citations/28841419" target="\_blank">28841419</a>). Also acts as a negative regulator of innate immune activation by restricting CGAS activity toward self-DNA upon acute loss of nuclear membrane integrity (PubMed:<a href="http://www.uniprot.org/citations/32792394" target="\_blank">32792394</a>). Outcompetes CGAS for DNA-binding, thereby preventing CGAS activation and subsequent damaging autoinflammatory responses (PubMed:<a href="http://www.uniprot.org/citations/32792394" target="\_blank">32792394</a>). Also involved in DNA damage response: interacts with PARP1 in response to oxidative stress, thereby inhibiting the ADP-ribosyltransferase activity of PARP1 (PubMed:<a href="http://www.uniprot.org/citations/31796734" target="\_blank">31796734</a>). Involved in the recognition of exogenous dsDNA in the cytosol: associates with exogenous dsDNA immediately after its appearance in the cytosol at endosome breakdown and is required to avoid autophagy (PubMed:<a href="http://www.uniprot.org/citations/25991860" target="\_blank">25991860</a>). In case of poxvirus infection, has an antiviral activity by blocking viral DNA replication (PubMed:<a href="http://www.uniprot.org/citations/18005698" target="\_blank">18005698</a>).

### Cellular Location

Nucleus. Chromosome. Nucleus envelope. Cytoplasm. Note=Significantly enriched at the nuclear inner membrane, diffusely throughout the nucleus during interphase and concentrated at the chromosomes during the M-phase (PubMed:16495336, PubMed:24600006). The phosphorylated form (by VRK1) shows a cytoplasmic localization whereas the unphosphorylated form locates almost exclusively in the nucleus (PubMed:16495336, PubMed:24600006). May be included in HIV-1 virions via its interaction with viral GAG polyprotein (PubMed:14645565)

### Tissue Location

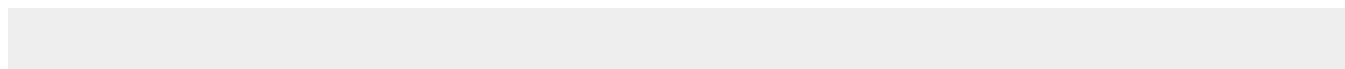
Widely expressed. Expressed in colon, brain, heart, kidney, liver, lung, ovary, pancreas, placenta, prostate, skeletal muscle, small intestine, spleen and testis. Not detected in thymus and peripheral blood leukocytes.

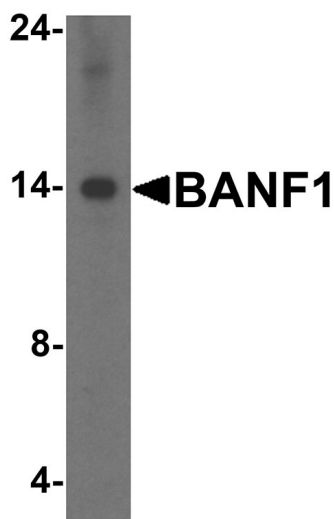
### BANF1 Antibody - Protocols

Provided below are standard protocols that you may find useful for product applications.

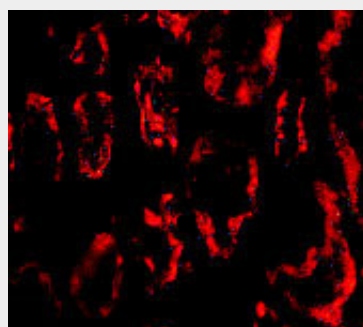
- [Western Blot](#)
- [Blocking Peptides](#)
- [Dot Blot](#)
- [Immunohistochemistry](#)
- [Immunofluorescence](#)
- [Immunoprecipitation](#)
- [Flow Cytometry](#)
- [Cell Culture](#)

### BANF1 Antibody - Images





Western blot analysis of BANF1 in HeLa cell lysate with BANF1 antibody at 1 µg/mL.



Immunofluorescence of BANF1 in human kidney tissue with BANF1 antibody at 20 µg/mL.

### **BANF1 Antibody - Background**

**BANF1 Antibody:** Barrier-to-autointegration factor 1 (BANF1) is a conserved chromatin protein that non-specifically binds double-stranded DNA. BANF1 also interacts with a family of nuclear proteins that include LAP2, emerin, and MAN1. It is also a host cell component of retroviral pre-integration complexes (PICs), including that of HIV. BANF1 will bind to p55 Gag (the structural precursor of HIV-1 virions) as well as its cleaved product matrix. In addition to being a host cell component of the PIC, it is thought that BANF1 is also present at low levels in incoming virions, and thus might contribute to the assembly or activity of HIV-1 PICs through direct binding to matrix as well as DNA.

### **BANF1 Antibody - References**

- Furukawa K. LAP2 binding protein 1 (L2BP1/BANF1) is a candidate mediator of LAP2-chromatin interaction. *J. Cell Sci.* 1999; 112:2485-92.
- Cai M, Huang Y, Ghirlando R, et al. Solution structure of the constant region of nuclear envelope protein LAP2 reveals two LEM-domain structures: one binds BANF1 and the other binds DNA. *EMBO J.* 2001; 20:4399-407.
- Chen H and Engelman A. The barrier-to-autointegration protein is a host factor for HIV type 1 integration. *Proc. Natl. Acad. Sci. USA* 1998; 95:15270-4.