

LGP2 Antibody
Catalog # ASC10592**Specification****LGP2 Antibody - Product Information**

Application
Primary Accession
Other Accession
Reactivity
Host
Clonality
Isotype
Calculated MW

WB, E
[Q96C10](#)
[EAW60798](#), [119581202](#)
Human, Mouse, Rat
Rabbit
Polyclonal
IgG
Predicted: 70 kDa

Application Notes

Observed: 75 kDa KDa
LGP2 antibody can be used for detection of LGP2 by Western blot at 1 - 2 µg/mL.

LGP2 Antibody - Additional Information

Gene ID **79132**

Target/Specificity

DHX58; At least four isoforms of LGP2 are known to exist.

Reconstitution & Storage

LGP2 antibody can be stored at 4°C for three months and -20°C, stable for up to one year. As with all antibodies care should be taken to avoid repeated freeze thaw cycles. Antibodies should not be exposed to prolonged high temperatures.

Precautions

LGP2 Antibody is for research use only and not for use in diagnostic or therapeutic procedures.

LGP2 Antibody - Protein Information

Name DHX58 ([HGNC:29517](#))

Synonyms D11LGP2E, LGP2

Function

Acts as a regulator of RIGI and IFIH1/MDA5 mediated antiviral signaling. Cannot initiate antiviral signaling as it lacks the CARD domain required for activating MAVS/IPS1-dependent signaling events. Can have both negative and positive regulatory functions related to RIGI and IFIH1/MDA5 signaling and this role in regulating signaling may be complex and could probably depend on characteristics of the infecting virus or target cells, or both. Its inhibitory action on RIG- I signaling may involve the following mechanisms: competition with RIGI for binding to the viral RNA, binding to RIGI and inhibiting its dimerization and interaction with MAVS/IPS1, competing with IKBKE in its binding to MAVS/IPS1 thereby inhibiting activation of interferon regulatory factor 3 (IRF3). Its positive regulatory role may involve unwinding or stripping nucleoproteins of viral RNA thereby

facilitating their recognition by RIGI and IFIH1/MDA5. Involved in the innate immune response to various RNA viruses and some DNA viruses such as poxviruses and coronavirus SARS-CoV-2, and also to the bacterial pathogen *Listeria monocytogenes* (PubMed:31256877). Can bind both ssRNA and dsRNA, with a higher affinity for dsRNA. Shows a preference to 5'-triphosphorylated RNA, although it can recognize RNA lacking a 5'-triphosphate.

Cellular Location

Cytoplasm.

Tissue Location

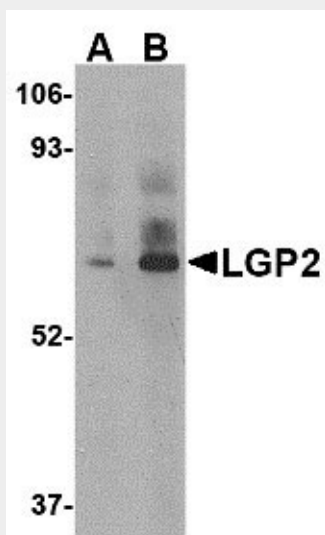
Expressed in testis, nerve and spleen. Also expressed in the brain.

LGP2 Antibody - Protocols

Provided below are standard protocols that you may find useful for product applications.

- [Western Blot](#)
- [Blocking Peptides](#)
- [Dot Blot](#)
- [Immunohistochemistry](#)
- [Immunofluorescence](#)
- [Immunoprecipitation](#)
- [Flow Cytometry](#)
- [Cell Culture](#)

LGP2 Antibody - Images



Western blot analysis of LGP2 in rat kidney tissue lysate with LGP2 antibody at (A) 1 and (B) 2 µg/mL.

LGP2 Antibody - Background

LGP2 Antibody: Anti-viral innate immune responses are triggered by pathogen-associated molecular patterns (such as the accumulation of intracellular nucleic acids resulting from virus infections) and represent the first line of defense against numerous infectious organisms. The Toll-like receptors (TLR) 3, 7, 8, and 9 are expressed in immune cells and function as

transmembrane pattern recognition receptors to detect foreign nucleic acids. Other proteins that play similar roles, such as RIG-1 and MDA5 are members of a CARD-helicase family and are expressed in the cytoplasm. A third protein, LGP2, is similar to RIG-1 and MDA5, except for lacking a homologous CARD domain. It is thought to act as an element of negative-feedback regulation of intracellular antiviral signaling.

LGP2 Antibody - References

Akira S, Uematsu S, and Takeuchi O. Pathogen recognition and innate immunity. *Cell* 2006; 124:783-801.

Iwasaki A and Medzhitov R. Toll-like receptor control of the adaptive immune responses. *Nat. Immunol.* 2004; 5:987-95.

Yoneyama M, Kikuchi K, Matsumoto K, et al. The RNA helicase RIG-I has an essential function in double-stranded RNA-induced innate antiviral responses. *Nat. Immunol.* 2004; 5:730-7.

Andrejeva J, Childs KS, Young DF, et al. The V proteins of paramyxoviruses bind the IFN-inducible RNA helicase, mda-5, and inhibits its activation of the IFN-beta promoter. *Proc. Natl. Acad. Sci. USA*, 2004; 101:17264-9.