

**Plxdc2 Antibody**  
**Catalog # ASC10622****Specification**

---

**Plxdc2 Antibody - Product Information**

Application	WB, IHC-P, IF, E
Primary Accession	<a href="#">Q6UX71</a>
Other Accession	<a href="#">Q6UX71</a> , <a href="#">74749416</a>
Reactivity	Human, Mouse, Rat
Host	Rabbit
Clonality	Polyclonal
Isotype	IgG
Application Notes	Plxdc2 antibody can be used for detection of Plxdc2 by Western blot at 0.5 - 1 µg/mL. Antibody can also be used for immunohistochemistry starting at 2.5 µg/mL. For immunofluorescence start at 20 µg/mL.

**Plxdc2 Antibody - Additional Information**

Gene ID	84898
<b>Target/Specificity</b>	
PLXDC2;	

**Reconstitution & Storage**

Plxdc2 antibody can be stored at 4°C for three months and -20°C, stable for up to one year. As with all antibodies care should be taken to avoid repeated freeze thaw cycles. Antibodies should not be exposed to prolonged high temperatures.

**Precautions**

Plxdc2 Antibody is for research use only and not for use in diagnostic or therapeutic procedures.

**Plxdc2 Antibody - Protein Information**

**Name** PLXDC2

**Synonyms** TEM7R

**Function**

May play a role in tumor angiogenesis.

**Cellular Location**

Membrane; Single-pass type I membrane protein

**Tissue Location**

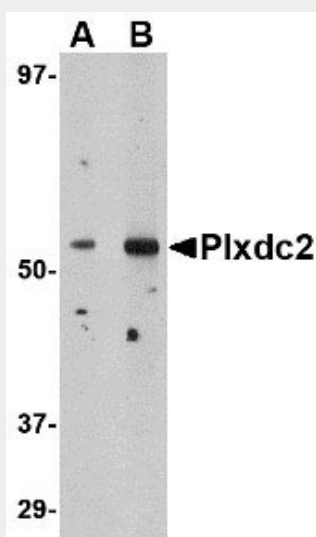
Expressed in the endothelial cells of the stroma but not in the endothelial cells of normal colonic tissue

## Plxdc2 Antibody - Protocols

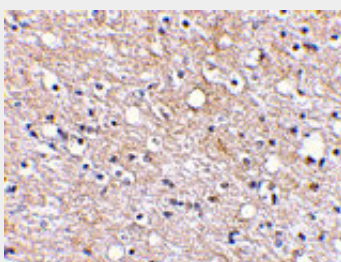
Provided below are standard protocols that you may find useful for product applications.

- [Western Blot](#)
- [Blocking Peptides](#)
- [Dot Blot](#)
- [Immunohistochemistry](#)
- [Immunofluorescence](#)
- [Immunoprecipitation](#)
- [Flow Cytometry](#)
- [Cell Culture](#)

## Plxdc2 Antibody - Images



Western blot analysis of Plxdc2 in human brain tissue lysate with Plxdc2 antibody at (A) 0.5 (B) 1  $\mu\text{g/mL}$ .



Immunohistochemical staining of human brain tissue using Plxdc2 antibody at 2.5  $\mu\text{g/mL}$ .



Immunofluorescence of Plxdc2 in Human Brain cells with Plxdc2 antibody at 20 µg/mL.

### **Plxdc2 Antibody - Background**

Plxdc2 Antibody: Plxdc2, also known as Tumor endothelial marker 7-related (TEM7R) encodes a protein with 57% amino acid identity to TEM7, the most abundant tumor endothelial marker. Plxdc2 is strongly expressed in the endothelial cells of the tumor stroma, but not in the endothelial cells of normal colonic tissue. Plxdc2 is also expressed at high levels in vessels of some normal tissues, with highest expression in muscle and lung. Plxdc2 and TEM7 may be important for tumor angiogenesis in humans. Cortactin was identified as a protein capable of binding to the extracellular region of both TEM7 and Plxdc2, and may provide new opportunities for the delivery of therapeutic and imaging agents to the vessels of solid tumors.

### **Plxdc2 Antibody - References**

Carson-Weber EB, Watkins DN, Nanda A, et al. Cell surface tumor epithelial markers are conserved in mice and humans. *Cancer Res.*2001; 61:6649-55.  
Nabda A and St. Croix BI. Tumor endothelial markers: new targets for cancer therapy. *Curr Opin Oncol.*2004; 16:44-9.  
St. Croix B, Rago C, Velculescu V, et al. Genes expressed in human tumor endothelium. *Science*2000; 289:1197-202.  
Nanda A, Buckhaults P, Seaman S, et al. Identification of a binding partner for the endothelial cell surface proteins TEM7 and TEM7R. *Cancer Res.*2004; 64:8507-11.