

**Slitrk5 Antibody**  
**Catalog # ASC10645****Specification**

---

**Slitrk5 Antibody - Product Information**

Application	WB, IHC, IF
Primary Accession	<a href="#">O94991</a>
Other Accession	<a href="#">O94991</a> , <a href="#">46397810</a>
Reactivity	Human, Mouse, Rat
Host	Rabbit
Clonality	Polyclonal
Isotype	IgG
Application Notes	Slitrk5 antibody can be used for detection of Slitrk5 by Western blot at 1 µg/mL. Antibody can also be used for immunohistochemistry starting at 2.5 µg/mL. For immunofluorescence start at 20 µg/mL.

**Slitrk5 Antibody - Additional Information**Gene ID **26050****Target/Specificity**

SLITRK5; This antibody is predicted to have no cross-reactivity to other Slitrk proteins.

**Reconstitution & Storage**

Slitrk5 antibody can be stored at 4°C for three months and -20°C, stable for up to one year. As with all antibodies care should be taken to avoid repeated freeze thaw cycles. Antibodies should not be exposed to prolonged high temperatures.

**Precautions**

Slitrk5 Antibody is for research use only and not for use in diagnostic or therapeutic procedures.

**Slitrk5 Antibody - Protein Information****Name** SLITRK5**Synonyms** KIAA0918, LRRC11**Function**

Suppresses neurite outgrowth.

**Cellular Location**

Membrane; Single-pass type I membrane protein

**Tissue Location**

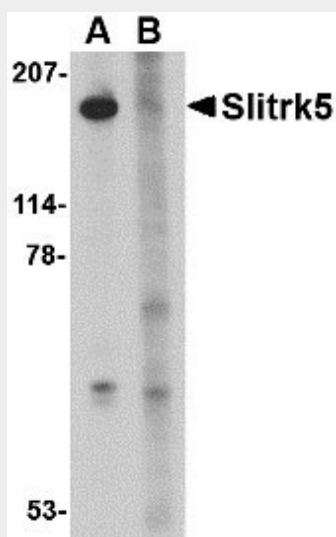
Expressed predominantly in the cerebral cortex of the brain but also at low levels in the spinal cord and medulla

## Slitrk5 Antibody - Protocols

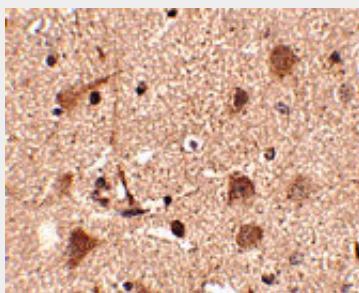
Provided below are standard protocols that you may find useful for product applications.

- [Western Blot](#)
- [Blocking Peptides](#)
- [Dot Blot](#)
- [Immunohistochemistry](#)
- [Immunofluorescence](#)
- [Immunoprecipitation](#)
- [Flow Cytometry](#)
- [Cell Culture](#)

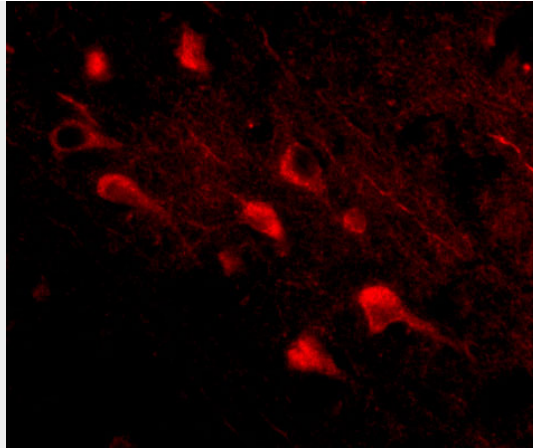
## Slitrk5 Antibody - Images



Western blot analysis of Slitrk5 in 3T3 cell lysate with Slitrk5 antibody at 1  $\mu\text{g/mL}$  in the (A) absence or (B) presence of blocking peptide.



Immunohistochemistry of Slitrk5 in human brain tissue with Slitrk5 antibody at 2.5  $\mu\text{g/mL}$ .



Immunofluorescence of slitrk5 in human brain tissue with slitrk5 antibody at 20 µg/mL.

### **Slitrk5 Antibody - Background**

Slitrk5 Antibody: SLIT and NTRK-like family 5 (Slitrk5) is a member a protein family consisting of six homologous transmembrane proteins (Slitrk1-6) that share two conserved leucine-rich repeat domains in the extracellular domain and have significant homology to Slit, a secreted axonal growth-controlling protein. These proteins are also homologous to trk neurotrophin receptors in their intracellular domains. Expression of Slitrk proteins is highly restricted to neural and brain tumor tissues, but varies within the protein family. Like every other Slitrk protein except Slitrk1, overexpression of Slitrk5 inhibited neurite outgrowth in cultured neurons, suggesting that these proteins are involved in the control of neurite outgrowth.

### **Slitrk5 Antibody - References**

Aruga J and Mikoshiba K. Identification and characterization of Slitrk, a novel transmembrane protein family controlling neurite outgrowth. *Mol. Cell Neurosci.*2003; 24:117-29.  
Aruga J, Yokota N, and Mikoshiba K. Human SLITRK family genes: genomic organization and expression profiling in normal and brain tumor tissue. *Gene*2003; 315:87-94.