

Wnt10a Antibody
Catalog # ASC10708**Specification****Wnt10a Antibody - Product Information**

Application	WB
Primary Accession	Q9GZT5
Other Accession	Q9GZT5 , 80326
Reactivity	Human, Mouse, Rat
Host	Rabbit
Clonality	Polyclonal
Isotype	IgG
Calculated MW	Predicted: 46 kDa

Application Notes	Observed: 46 kDa KDa Wnt10a antibody can be used for detection of Wnt10a by Western blot at 1 - 2 µg/mL. Antibody can also be used for immunohistochemistry starting at 5 µg/mL. For immunofluorescence start at 20 µg/mL.
-------------------	--

Wnt10a Antibody - Additional InformationGene ID **80326****Target/Specificity**

Wnt10a antibody was raised against a 14 amino acid synthetic peptide from near the carboxy terminus of human Wnt10a.

The immunogen is located within amino acids 300 - 350 of Wnt10a.

Reconstitution & Storage

Wnt10a antibody can be stored at 4°C for three months and -20°C, stable for up to one year. As with all antibodies care should be taken to avoid repeated freeze thaw cycles. Antibodies should not be exposed to prolonged high temperatures.

Precautions

Wnt10a Antibody is for research use only and not for use in diagnostic or therapeutic procedures.

Wnt10a Antibody - Protein Information**Name** WNT10A**Function**

Ligand for members of the frizzled family of seven transmembrane receptors (Probable). Functions in the canonical Wnt/beta-catenin signaling pathway (By similarity). Plays a role in normal ectoderm development (PubMed:17847007, PubMed:28589954). Required for normal tooth development (PubMed:17847007, PubMed:28589954).

href="http://www.uniprot.org/citations/29178643" target="_blank">29178643, PubMed:28589954). Required for normal postnatal development and maintenance of tongue papillae and sweat ducts (PubMed:28589954). Required for normal proliferation of basal cells in tongue filiform papillae, plantar epithelium and sweat ducts. Required for normal expression of keratins in tongue papillae (By similarity). Required for normal expression of KRT9 in foot plant epithelium (PubMed:28589954). Required for normal hair follicle function (PubMed:28589954).

Cellular Location

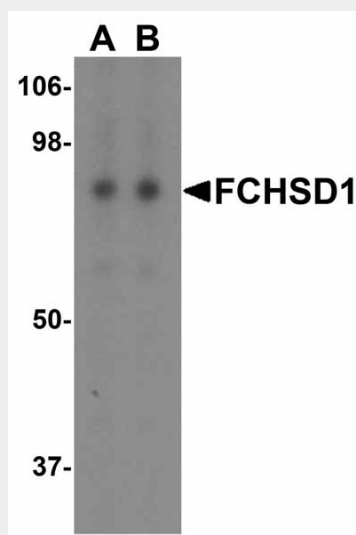
Secreted, extracellular space, extracellular matrix. Secreted

Wnt10a Antibody - Protocols

Provided below are standard protocols that you may find useful for product applications.

- [Western Blot](#)
- [Blocking Peptides](#)
- [Dot Blot](#)
- [Immunohistochemistry](#)
- [Immunofluorescence](#)
- [Immunoprecipitation](#)
- [Flow Cytometry](#)
- [Cell Culture](#)

Wnt10a Antibody - Images



Western blot analysis of FCHSD1 in MCF7 cell lysate with FCHSD1 antibody at (A) 0.5 and (B) 1 µg/mL.

Wnt10a Antibody - Background

Wnt10a Antibody: Wnt10a is a member of the Wnt family, a gene family that encodes secreted signaling proteins that play crucial roles in normal development such as regulation of cell fate and patterning during embryogenesis as well as neoplastic transformation. Elevated levels of Wnt10a

have been detected in several human tumors and cancer cell lines including colorectal cancer and chronic lymphocytic leukemia and it has been suggested that uncontrolled Wnt signaling may contribute to the defect in apoptosis that characterizes these malignancies. Recently, a mutation in Wnt10a was found to be associated with odonto-oncho-dermal dysplasia, an autosomal recessive ectodermal dysplasia.

Wnt10a Antibody - References

Kelly GM, Lai CJ, and Moon RT. Expression of wnt10a in the central nervous system of developing zebrafish. *Dev. Biol.* 1993; 158:113-21.

Nusse R and Varmus RE. Wnt genes. *Cell* 1992; 69:1073-87.

Kirikoshi H, Sekihara H, and Katoh M. WNT10A and WNT6, clustered in human chromosome 2q35 region head-to-tail manner, are strongly coexpressed in SW480 cells. *Biochem. Biophys. Res. Commun.* 2001; 283:798-805.

Kirikoshi H, Inoue S, Sekihara H, et al. Expression of WNT10A in human cancer. *Int. J. Oncol.* 2001; 19:997-1001.