

**BMP15 Antibody**  
**Catalog # ASC10739****Specification**

---

**BMP15 Antibody - Product Information**

Application	IHC
Primary Accession	<a href="#">O95972</a>
Other Accession	<a href="#">NP_005439</a> , <a href="#">257743454</a>
Reactivity	Human
Host	Rabbit
Clonality	Polyclonal
Isotype	IgG
Calculated MW	43 kDa KDa
Application Notes	BMP15 antibody can be used for detection of BMP15 by Western blot at 1 - 2 µg/mL.

**BMP15 Antibody - Additional Information**

Gene ID	9210
Target/Specificity	
BMP15;	

**Reconstitution & Storage**

BMP15 antibody can be stored at 4°C for three months and -20°C, stable for up to one year.

**Precautions**

BMP15 Antibody is for research use only and not for use in diagnostic or therapeutic procedures.

**BMP15 Antibody - Protein Information**

**Name** BMP15

**Synonyms** GDF9B

**Function**

May be involved in follicular development. Oocyte-specific growth/differentiation factor that stimulates folliculogenesis and granulosa cell (GC) growth.

**Cellular Location**

Secreted.

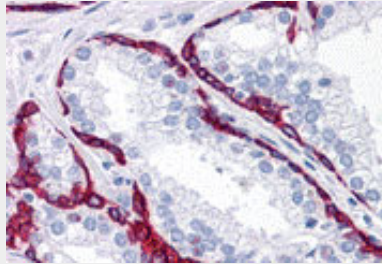
**BMP15 Antibody - Protocols**

Provided below are standard protocols that you may find useful for product applications.

- [Western Blot](#)

- [Blocking Peptides](#)
- [Dot Blot](#)
- [Immunohistochemistry](#)
- [Immunofluorescence](#)
- [Immunoprecipitation](#)
- [Flow Cytometry](#)
- [Cell Culture](#)

#### **BMP15 Antibody - Images**



Immunohistochemistry of BMP15 in human prostate tissue with BMP15 antibody at 10 µg/mL

#### **BMP15 Antibody - Background**

**BMP15 Antibody:** BMP15, or GDF9B is a member of the bone morphogenetic protein family which is part of the transforming growth factor-beta superfamily that are involved in embryonic development and adult tissue homeostasis. BMP15 is expressed exclusively in the oocyte. It is an oocyte-specific growth/differentiation factor that may be involved in oocyte maturation and follicular development. Defects in BMP15 are the cause of ovarian dysgenesis type 2. BMP15 could be used as an oogenesis marker to track human amniotic fluid stem cells differentiation into the oocyte-like cells.

#### **BMP15 Antibody - References**

Massague J. The transforming growth factor-beta family. *Ann. Rev. Cell. Biol.* 1990; 6:597-641  
Aaltonen J, Laitinen MP, Vuojolainen K, et al. Human growth differentiation factor 9 (GDF-9) and its novel homolog GDF-9B are expressed in oocytes during early folliculogenesis. *J. Clin. Endocrinol. Metab.* 1999; 84:2744-50.  
Laitinen M, Vuojolainen K, Jaatinen R, et al. A novel growth differentiation factor-9 (GDF-9) related factor is coexpressed with GDF-9 in mouse oocytes during folliculogenesis. *Mech. Dev.* 1998; 78:135-40.  
Galloway SM, Grogan SM, Wilson T et al. Bmp15 mutations and ovarian function. *Mol. Cell Endocrinol.* 2002; 191:15-8