

OVGP1 Antibody
Catalog # ASC10750**Specification**

OVGP1 Antibody - Product Information

Application	WB, IF, ICC, E
Primary Accession	Q12889
Other Accession	NP_002548 , 5016
Reactivity	Human, Mouse, Rat
Host	Rabbit
Clonality	Polyclonal
Isotype	IgG
Calculated MW	Predicted: 75 kDa

Application Notes

Observed: Due to extensive post-translational modification, OVGP1 migrates at ~140 kDa in SDS-PAGE. KDa OVGP1 antibody can be used for the detection of OVGP1 by Western blot at 1 µg/mL. Antibody can also be used for immunocytochemistry starting at 2.5 µg/mL. For immunofluorescence start at 2.5 µg/mL.

OVGP1 Antibody - Additional InformationGene ID **5016****Target/Specificity**

OVGP1 antibody was raised against an 18 amino acid synthetic peptide from near the amino terminus of human OVGP1.

The immunogen is located within amino acids 60 - 110 of OVGP1.

Reconstitution & Storage

OVGP1 antibody can be stored at 4°C for three months and -20°C, stable for up to one year. As with all antibodies care should be taken to avoid repeated freeze thaw cycles. Antibodies should not be exposed to prolonged high temperatures.

Precautions

OVGP1 Antibody is for research use only and not for use in diagnostic or therapeutic procedures.

OVGP1 Antibody - Protein Information**Name** OVGP1**Synonyms** MUC9, OGP**Function**

Binds to oocyte zona pellucida in vivo. May play a role in the fertilization process and/or early

embryonic development.

Cellular Location

Cytoplasmic vesicle, secretory vesicle. Note=Secretory granules

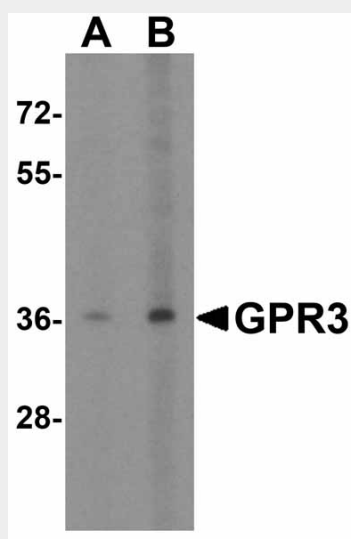
Tissue Location

Oviduct.

OVGP1 Antibody - Protocols

Provided below are standard protocols that you may find useful for product applications.

- [Western Blot](#)
- [Blocking Peptides](#)
- [Dot Blot](#)
- [Immunohistochemistry](#)
- [Immunofluorescence](#)
- [Immunoprecipitation](#)
- [Flow Cytometry](#)
- [Cell Culture](#)

OVGP1 Antibody - Images

Western blot analysis of GPR3 in EL4 cell lysate with GPR3 antibody at (A) 1 and (B) 2 µg/mL.

OVGP1 Antibody - Background

OVGP1 Antibody: Oviductins belong to a family of glycoproteins that have been suggested to play several roles during the early processes of reproduction. OVGP1 is a large carbohydrate-rich, epithelial glycoprotein with numerous O-glycosylation sites within threonine, serine, and proline-rich tandem repeats. The protein is secreted from non-ciliated oviductal epithelial cells and associates with ovulated oocytes, blastomeres, and spermatozoan acrosomal regions. At least two isoforms of OVGP are known to exist.

OVGP1 Antibody - References

Buhi WC. Characterization and biological roles of oviduct-specific, oestrogen-dependent

glycoprotein. Reproduction123:355-62.

Arias EB, Verhage HG and Jaffe RC. Complementary deoxyribonucleic acid cloning and molecular characterization of an estrogen-dependent human oviductal glycoprotein. Biol. Reprod.1994; 51:685-94.