

Aldh3A1 Antibody
Catalog # ASC10759**Specification****Aldh3A1 Antibody - Product Information**

Application	WB
Primary Accession	P30838
Other Accession	NP_000682 , 22907049
Reactivity	Human, Mouse, Rat
Host	Rabbit
Clonality	Polyclonal
Isotype	IgG
Application Notes	Aldh3A1 antibody can be used for detection of Aldh3A1 by Western blot at 1 - 2 µg/mL.

Aldh3A1 Antibody - Additional Information

Gene ID 218

Target/Specificity

ALDH3A1; At least two isoforms of Aldh3A1 are known to exist. This antibody is predicted to have no cross-reactivity to Aldh3A2.

Reconstitution & Storage

Aldh3A1 antibody can be stored at 4°C for three months and -20°C, stable for up to one year. As with all antibodies care should be taken to avoid repeated freeze thaw cycles. Antibodies should not be exposed to prolonged high temperatures.

Precautions

Aldh3A1 Antibody is for research use only and not for use in diagnostic or therapeutic procedures.

Aldh3A1 Antibody - Protein Information

Name ALDH3A1

Synonyms ALDH3

Function

ALDHs play a major role in the detoxification of alcohol- derived acetaldehyde (Probable). They are involved in the metabolism of corticosteroids, biogenic amines, neurotransmitters, and lipid peroxidation (Probable). Oxidizes medium and long chain aldehydes into non-toxic fatty acids (PubMed:1737758). Preferentially oxidizes aromatic aldehyde substrates (PubMed:1737758). Comprises about 50 percent of corneal epithelial soluble proteins (By similarity). May play a role in preventing corneal damage caused by ultraviolet light (By similarity).

Cellular Location

Cytoplasm {ECO:0000250|UniProtKB:P47739}.

Tissue Location

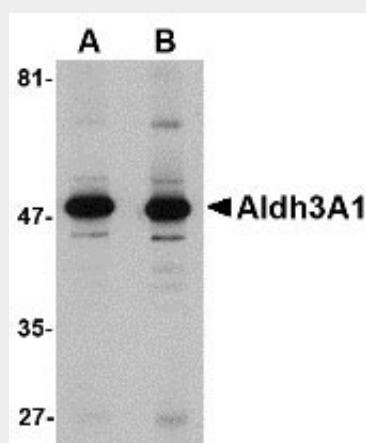
High levels in stomach, esophagus and lung; low level in the liver and kidney

Aldh3A1 Antibody - Protocols

Provided below are standard protocols that you may find useful for product applications.

- [Western Blot](#)
- [Blocking Peptides](#)
- [Dot Blot](#)
- [Immunohistochemistry](#)
- [Immunofluorescence](#)
- [Immunoprecipitation](#)
- [Flow Cytometry](#)
- [Cell Culture](#)

Aldh3A1 Antibody - Images



Western blot analysis of Aldh3A1 in human stomach lysate with Aldh3A1 antibody at (A) 1 and (B) 2 $\mu\text{g}/\text{mL}$.

Aldh3A1 Antibody - Background

Aldh3A1 Antibody: Aldh3A1 is a member of the aldehyde dehydrogenase superfamily, a group of NAD(P)(+)-dependent enzymes that catalyze the oxidation of a wide spectrum of aliphatic and aromatic aldehydes. Aldh3A1 is highly expressed in stomach and even more strongly in cornea, representing between 5 to 50% of the water soluble protein fraction in mammalian corneas. It is thought that Aldh3A1 acts to protect the cornea from UV-induced oxidative stress by not only detoxification of reactive aldehydes but also through the direct absorption of UV energy. However, corneas from Aldh3A1-null mice are indistinguishable from those from wild-type mice; mice lacking both Aldh3A1 and Aldh1A1 showed increased cataract formation following UVB exposure, suggesting that Aldh1A1 may be able to compensate for the loss of Aldh3A1.

Aldh3A1 Antibody - References

Vasiliou V and Pappa A. Polymorphisms of human aldehyde dehydrogenases. Consequences for drug metabolism and disease. *Pharmacology*2000; 61:192-8.
Hsu LC, Chang WC, Shibuya A, et al. Human stomach aldehyde dehydrogenase cDNA and genomic

cloning, primary structure, and expression in Escheria coli. J. Biol. Chem.1992; 267:3030-7.
Pappa A, Sophos NA and Vasiliou V. Corneal and Stomach expression of aldehyde dehydrogenases:
from fish to mammals. Chem. Biol. Interact.2001; 130:181-91.
Estey T, Cantore M, Weston PA, et al. Mechanisms involved in the protection of UV-induced protein
inactivation by the corneal crystallin ALDH3A1. J. Biol. Chem.2007; 282:4382-92.