

**CUEDC1 Antibody**  
**Catalog # ASC10776****Specification**

---

**CUEDC1 Antibody - Product Information**

Application	WB, IHC, IF
Primary Accession	<a href="#">Q9NWM3</a>
Other Accession	<a href="#">AAH56882</a> , <a href="#">34785153</a>
Reactivity	Human, Mouse, Rat
Host	Rabbit
Clonality	Polyclonal
Isotype	IgG
Application Notes	CUEDC1 antibody can be used for detection of CUEDC1 by Western blot at 0.5 - 1 µg/mL. Antibody can also be used for immunohistochemistry starting at 2 µg/mL. For immunofluorescence start at 20 µg/mL.

**CUEDC1 Antibody - Additional Information**Gene ID **404093****Target/Specificity**

CUEDC1; CUEDC1 antibody will not cross-react with CUEDC2.

**Reconstitution & Storage**

CUEDC1 antibody can be stored at 4°C for three months and -20°C, stable for up to one year. As with all antibodies care should be taken to avoid repeated freeze thaw cycles. Antibodies should not be exposed to prolonged high temperatures.

**Precautions**

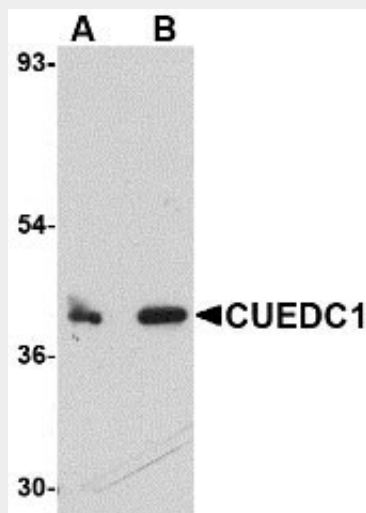
CUEDC1 Antibody is for research use only and not for use in diagnostic or therapeutic procedures.

**CUEDC1 Antibody - Protein Information****Name** CUEDC1**CUEDC1 Antibody - Protocols**

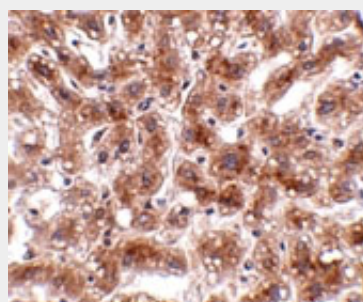
Provided below are standard protocols that you may find useful for product applications.

- [Western Blot](#)
- [Blocking Peptides](#)
- [Dot Blot](#)
- [Immunohistochemistry](#)
- [Immunofluorescence](#)
- [Immunoprecipitation](#)

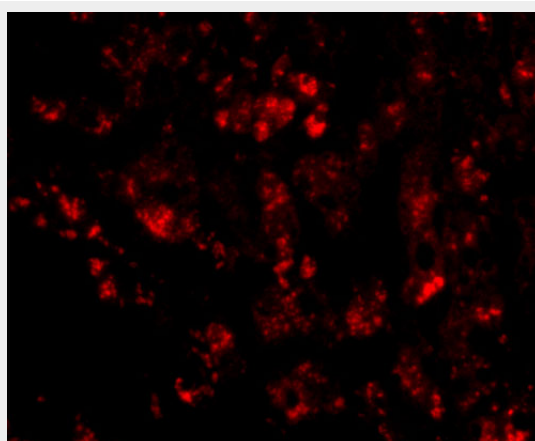
- [Flow Cytometry](#)
- [Cell Culture](#)

**CUEDC1 Antibody - Images**

Western blot analysis of CUEDC1 in rat liver tissue lysate with CUEDC1 antibody at (A) 0.5 and (B) 1  $\mu$ g/mL.



Immunohistochemistry of CUEDC1 in human liver tissue with CUEDC1 antibody at 2  $\mu$ g/mL.



Immunofluorescence of CUEDC1 in human liver tissue with CUEDC1 antibody at 20  $\mu$ g/mL.

**CUEDC1 Antibody - Background**

**CUEDC1 Antibody:** The CUE (coupling of ubiquitin conjugation to endoplasmic reticulum degradation) domain is an evolutionarily conserved, ~40 amino acid monoubiquitin-binding domain

that mediates intramolecular monoubiquitylation. CUE domains are present in eukaryotic proteins that are involved in ubiquitination and protein trafficking pathways and may be required for ubiquitination of the proteins in which they are found. CUEDC1 (CUE domain-containing protein 1) is a 386 amino acid protein that contains one CUE domain, suggesting a possible role in protein trafficking and degradation pathways. Two isoforms of CUEDC1 exist due to alternative splicing events. Defects in the gene encoding CUEDC1 may be associated with early stage cervical cancer, implicating CUEDC1 as a potential tumor marker.

#### **CUEDC1 Antibody - References**

Shih SC, Prag G, Francis SA, et al. A ubiquitin-binding motif required for intramolecular monoubiquitylation, the CUE domain. EMBO J.2003; 22:1273-81.  
Ponting CP. Proteins of the endoplasmic-reticulum-associated degradation pathway: domain detection and function prediction. Biochem. J.2000; 351:527-35.  
Prag G, Misra S, Jones EA, et al. Mechanism of ubiquitin recognition by the CUE domain of Vps9p. Cell2003; 113:609-20.  
Kang RS, Daniels CM, Francis SA, et al. Solution structure of a CUE-ubiquitin complex reveals a conserved mode of ubiquitin binding. Cell2003; 113:621-30.