

Spred3 Antibody
Catalog # ASC10785**Specification**

Spred3 Antibody - Product Information

Application	WB, IHC-P, IF, E
Primary Accession	Q2MJR0
Other Accession	NP_001035987 , 399473
Reactivity	Human
Host	Rabbit
Clonality	Polyclonal
Isotype	IgG
Application Notes	Spred3 antibody can be used for detection of Spred3 by Western blot at 2 - 4 µg/mL. Antibody can also be used for immunohistochemistry starting at 2.5 µg/mL. For immunofluorescence start at 20 µg/mL.

Spred3 Antibody - Additional InformationGene ID **399473****Target/Specificity**

Spred3 antibody was raised against a 16 amino acid synthetic peptide near the center of the human Spred3.

The immunogen is located within amino acids 140 - 190 of Spred3.

Reconstitution & Storage

Spred3 antibody can be stored at 4°C for three months and -20°C, stable for up to one year. As with all antibodies care should be taken to avoid repeated freeze thaw cycles. Antibodies should not be exposed to prolonged high temperatures.

Precautions

Spred3 Antibody is for research use only and not for use in diagnostic or therapeutic procedures.

Spred3 Antibody - Protein Information**Name** SPRED3**Synonyms** EVE-3**Function**

Tyrosine kinase substrate that inhibits growth-factor- mediated activation of MAP kinase (By similarity). Inhibits fibroblast growth factor (FGF)-induced retinal lens fiber differentiation, probably by inhibiting FGF-mediated phosphorylation of ERK1/2 (By similarity). Inhibits TGFB-induced epithelial-to-mesenchymal transition in lens epithelial cells (By similarity).

Cellular Location

Cell membrane {ECO:0000250|UniProtKB:Q6P6N5}; Peripheral membrane protein

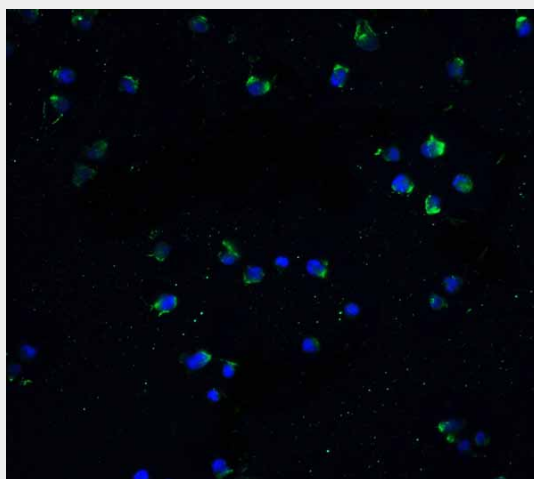
{ECO:0000250|UniProtKB:Q6P6N5}

Spred3 Antibody - Protocols

Provided below are standard protocols that you may find useful for product applications.

- [Western Blot](#)
- [Blocking Peptides](#)
- [Dot Blot](#)
- [Immunohistochemistry](#)
- [Immunofluorescence](#)
- [Immunoprecipitation](#)
- [Flow Cytometry](#)
- [Cell Culture](#)

Spred3 Antibody - Images



Immunofluorescence of DR3 in Jurkat cells with DR3 antibody at 5 µg/ml.

Spred3 Antibody - Background

Spred3 Antibody: Spred3 is a member of the Sprouty family, a group of proteins that act as negative regulators during development. Like Spred1 and Spred2, Spred3 contains an EVH1 domain in its amino terminus and a Sprouty-related cysteine-rich (SPR) domain in its C-terminus, but does not possess a functional c-kit binding domain (KBD). The Spred proteins have also been implicated in the negative feedback regulation of FGF signaling in embryogenesis and angiogenesis. Although Spred3 was initially reported to be expressed in brain, at least one report also indicates that Spred3 can be found in liver. At least two isoforms of Spred3 are known to exist.

Spred3 Antibody - References

Kato R, Nonami A, Taketomi T, et al. Molecular cloning of mammalian Spred-3 which suppresses tyrosine kinase-mediated Erk activation. *Biochem. Biophys. Res. Commun.*2003; 302:767-72.
Casci T, Vinos J, and Freeman M. Sprouty, an intracellular inhibitor of Ras signaling. *Cell*1999; 96:655-65.
Minowada G, Jarvis LA, Chi CL, et al. Vertebrate Sprouty genes are induced by FGF signaling and can cause chondrodysplasia when overexpressed. *Development*1999; 126:4465-75.
Lee SH, Schloss DJ, Jarvis L, et al. Inhibition of angiogenesis by a mouse sprouty protein. *J. Biol. Chem.*2001; 276:4128-33.