

Rkhd4 Antibody
Catalog # ASC10792**Specification**

Rkhd4 Antibody - Product Information

Application	WB, IHC, IF
Primary Accession	A1L020
Other Accession	A1L020 , 134034168
Reactivity	Human, Mouse, Rat
Host	Rabbit
Clonality	Polyclonal
Isotype	IgG
Application Notes	Rkhd4 antibody can be used for detection of Rkhd4 by Western blot at 1 µg/mL. Antibody can also be used for immunohistochemistry starting at 2.5 µg/mL. For immunofluorescence start at 20 µg/mL.

Rkhd4 Antibody - Additional Information

Gene ID	92312
Target/Specificity	
MEX3A;	

Reconstitution & Storage

Rkhd4 antibody can be stored at 4°C for three months and -20°C, stable for up to one year. As with all antibodies care should be taken to avoid repeated freeze thaw cycles. Antibodies should not be exposed to prolonged high temperatures.

Precautions

Rkhd4 Antibody is for research use only and not for use in diagnostic or therapeutic procedures.

Rkhd4 Antibody - Protein Information

Name MEX3A

Synonyms RKHD4

Function

RNA binding protein, may be involved in post-transcriptional regulatory mechanisms.

Cellular Location

Cytoplasm. Nucleus. Cytoplasm, P-body. Note=Predominantly expressed in the cytoplasm and shuttles between the cytoplasm and the nucleus through the CRM1 export pathway

Tissue Location

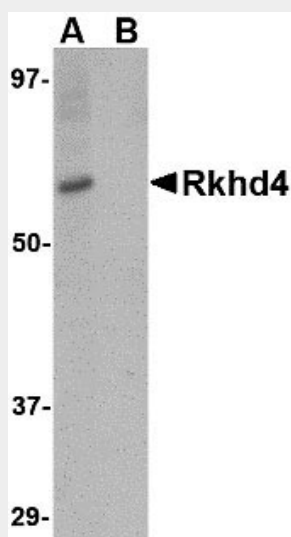
Highest levels found in fetal brain and testis. Detected also in thymus, salivary gland and uterus

Rkhd4 Antibody - Protocols

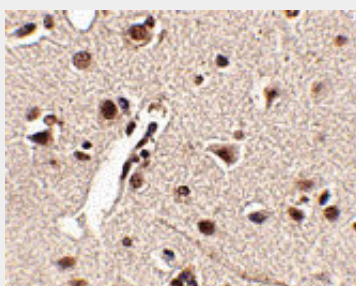
Provided below are standard protocols that you may find useful for product applications.

- [Western Blot](#)
- [Blocking Peptides](#)
- [Dot Blot](#)
- [Immunohistochemistry](#)
- [Immunofluorescence](#)
- [Immunoprecipitation](#)
- [Flow Cytometry](#)
- [Cell Culture](#)

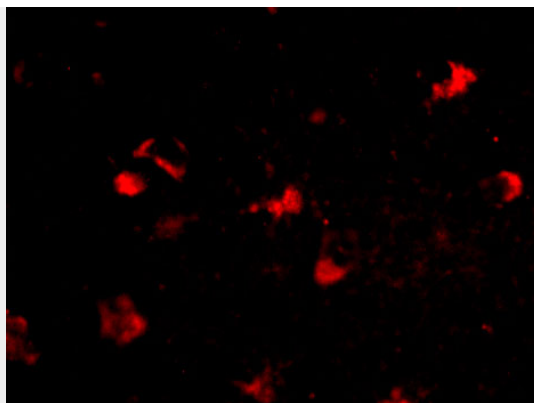
Rkhd4 Antibody - Images



Western blot analysis of Rkhd4 in SK-N-SH cell lysate with Rkhd4 antibody at 1 μ g/mL in (A) the absence and (B) the presence of blocking peptide.



Immunohistochemistry of Rkhd4 in human brain tissue with Rkhd4 antibody at 2.5 μ g/mL.



Immunofluorescence of rkhd4 in human brain tissue with rkhd4 antibody at 20 µg/mL.

Rkhd4 Antibody - Background

Rkhd4 Antibody: Rkhd4, also known as MEX3A is a member of a novel family of four homologous human MEX3 proteins each containing two heterogeneous nuclear ribonucleoprotein K homology (KH) domains and one carboxy-terminal RING finger module. MEX3 proteins, including Rkhd4, are phosphoproteins that bind RNA through their KH domains and shuttle between the nucleus and the cytoplasm via the CRM1 export pathway. These proteins are a novel family of evolutionarily conserved RNA-binding proteins, differentially recruited to P bodies and potentially involved in post-transcriptional regulatory mechanisms. While Rkhd2 has been suggested to be associated with susceptibility to essential hypertension type 8, the function of Rkhd4 remains unknown. Rkhd3 and Rkhd4, but not Rkhd2, co-localize with both the hDcp1a decapping factor and Argonaute (Ago) proteins in processing bodies (P bodies), recently characterized as centers of mRNA turnover.

Rkhd4 Antibody - References

Draper BW, Mello CC, Bowerman B, et al. MEX-3 is a KH domain protein that regulates blastomere identity in early *C. elegans* embryos. *Cell*1996; 87:205-16.
Liu J, Valencia-Sanchez MA, Hannon GJ, et al. MicroRNA-dependent localization of targeted mRNAs to mammalian P-bodies. *Nat. Cell Biol*2005; 7:719-23.
Guzman B, Cormand B, Ribases M, et al. Implication of chromosome 18 in hypertension by sibling pair and association analyses: putative involvement of the RKHD2 gene. *Hypertension*2006; 48:883-91.
Buchet-Poyau K, Courchet J, Le Hir H, et al. Identification and characterization of human Mex-3 proteins, a novel family of evolutionarily conserved RNA-binding proteins differentially localized to processing bodies. *Nucleic Acids Res.*2007; 35:1289-300.