

NIPSNAP3A Antibody
Catalog # ASC10816**Specification**

NIPSNAP3A Antibody - Product Information

Application	WB, IHC-P, IF, E
Primary Accession	Q9UFN0
Other Accession	NP_056284 , 22267436
Reactivity	Human, Mouse
Host	Rabbit
Clonality	Polyclonal
Isotype	IgG
Application Notes	NIPSNAP3A antibody can be used for detection of NIPSNAP3A by Western blot at 0.5 - 1 µg/mL. Antibody can also be used for immunohistochemistry starting at 2.5 µg/mL. For immunofluorescence start at 20 µg/mL.

NIPSNAP3A Antibody - Additional Information

Gene ID **25934**

Target/Specificity

NIPSNAP3A; At least two isoforms of NIPSNAP3A are known to exist. NIPSNAP3A antibody is predicted to not cross-react with any other members of the NIPSNAP protein family.

Reconstitution & Storage

NIPSNAP3A antibody can be stored at 4°C for three months and -20°C, stable for up to one year. As with all antibodies care should be taken to avoid repeated freeze thaw cycles. Antibodies should not be exposed to prolonged high temperatures.

Precautions

NIPSNAP3A Antibody is for research use only and not for use in diagnostic or therapeutic procedures.

NIPSNAP3A Antibody - Protein Information

Name NIPSNAP3A

Synonyms NIPSNAP4

Cellular Location

Cytoplasm, cytosol. Note=May be part of some vesicular structure distinct from lysosomal vesicles

Tissue Location

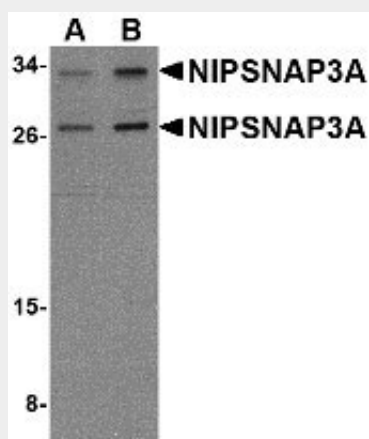
Ubiquitous. Highly expressed in liver, kidney and muscle. Expressed at intermediate level in brain, heart, colon, thymus, kidney, small intestine, placenta, lung, leukocytes and spleen

NIPSNAP3A Antibody - Protocols

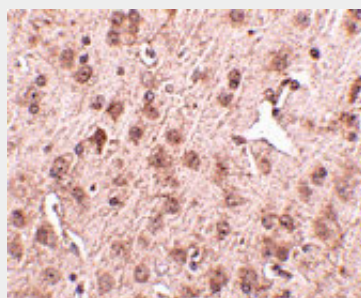
Provided below are standard protocols that you may find useful for product applications.

- [Western Blot](#)
- [Blocking Peptides](#)
- [Dot Blot](#)
- [Immunohistochemistry](#)
- [Immunofluorescence](#)
- [Immunoprecipitation](#)
- [Flow Cytometry](#)
- [Cell Culture](#)

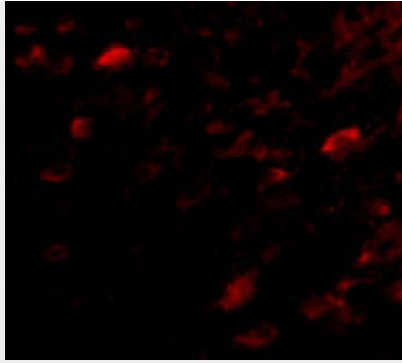
NIPSNAP3A Antibody - Images



Western blot analysis of NIPSNAP3A in mouse brain tissue lysate with NIPSNAP3A antibody at (A) 0.5 and (B) 1 µg/mL.



Immunohistochemistry of NIPSNAP3A in mouse brain tissue with NIPSNAP3A antibody at 2.5 µg/mL.



Immunofluorescence of NIPSNAP3A in Mouse Brain cells with NIPSNAP3A antibody at 5 µg/mL.

NIPSNAP3A Antibody - Background

NIPSNAP3A Antibody: The NIPSNAP proteins comprise a family of evolutionarily well-conserved proteins with strong sequence similarity to the central portion of a protein encoded by *C. elegans* chromosome III between a 4-nitrophenylphosphatase (NIP) domain and non-neuronal SNAP25-like protein. NIPSNAP2, a novel gene encoding a protein with tyrosine phosphorylation sites and a transmembrane domain, is co-amplified with EGFR in approximately 40% of glioblastomas, the most common and malignant form of central nervous system tumors. While NIPSNAP3B is highly expressed skeletal muscle, NIPSNAP3A mRNA levels are low. NIPSNAP3A protein is associated with plasma membrane and partially localized in rafts. NIPSNAP proteins have been suggested to be important in vesicular transport.

NIPSNAP3A Antibody - References

Seroussi E, Pan HQ, Kedra D, et al. Characterization of the human NIPSNAP1 gene from 22q12: a member of a novel gene family. *Gene*1998; 212:13-20.

Wang X-Y, Smith DI, Liu W, et al. GBAS, a novel gene encoding a protein with tyrosine phosphorylation sites and a transmembrane domain, is co-amplified with EGFR. *Genomics*1998; 49:448-51.

Buechler C, Bodzioch M, Bared SM, et al. Expression pattern and raft association of NIPSNAP3 and NIPSNAP4, highly homologous proteins encoded by genes in close proximity to the ATP-binding cassette transporter A1. *Genomics*2004; 83:1116-24.