

ZBTB1 Antibody
Catalog # ASC10818**Specification**

ZBTB1 Antibody - Product Information

Application	WB, IHC
Primary Accession	Q9Y2K1
Other Accession	AAH50719 , 29792103
Reactivity	Human, Mouse, Rat
Host	Rabbit
Clonality	Polyclonal
Isotype	IgG
Application Notes	ZBTB1 antibody can be used for detection of ZBTB1 by Western blot at 1 - 2 µg/mL. Antibody can also be used for immunohistochemistry starting at 2.5 µg/mL.

ZBTB1 Antibody - Additional InformationGene ID **22890****Target/Specificity**

ZBTB1; At least two isoforms of ZBTB1 are known to exist. This ZBTB1 antibody will not cross-react with ZBTB2.

Reconstitution & Storage

ZBTB1 antibody can be stored at 4°C for three months and -20°C, stable for up to one year. As with all antibodies care should be taken to avoid repeated freeze thaw cycles. Antibodies should not be exposed to prolonged high temperatures.

Precautions

ZBTB1 Antibody is for research use only and not for use in diagnostic or therapeutic procedures.

ZBTB1 Antibody - Protein Information**Name** ZBTB1**Synonyms** KIAA0997**Function**

Acts as a transcriptional repressor (PubMed:20797634). Represses cAMP-responsive element (CRE)-mediated transcriptional activation (PubMed:21706167). In addition, has a role in translesion DNA synthesis. Requires for UV-inducible RAD18 loading, PCNA monoubiquitination, POLH recruitment to replication factories and efficient translesion DNA synthesis (PubMed:24657165). Plays a key role in the transcriptional regulation of T lymphocyte development (By similarity).

Cellular Location

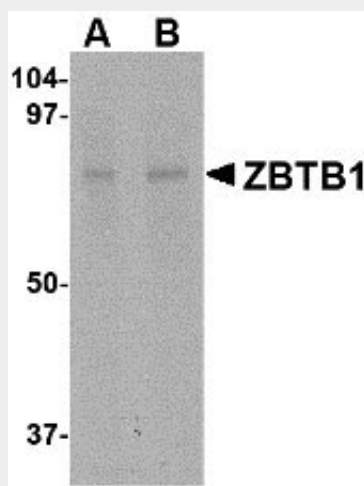
Nucleus. Nucleus, nucleoplasm. Note=Localized in dot-like structures in the nucleus (PubMed:21706167). Colocalized with SMRT in nuclear bodies (PubMed:20797634). The sumoylated form is preferentially located in the nucleoplasm outside the nuclear bodies(PubMed:20797634)

ZBTB1 Antibody - Protocols

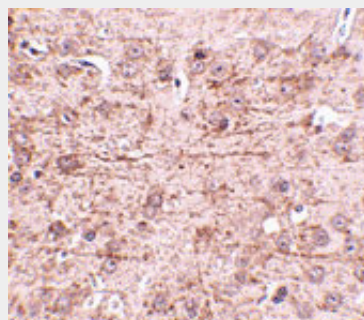
Provided below are standard protocols that you may find useful for product applications.

- [Western Blot](#)
- [Blocking Peptides](#)
- [Dot Blot](#)
- [Immunohistochemistry](#)
- [Immunofluorescence](#)
- [Immunoprecipitation](#)
- [Flow Cytometry](#)
- [Cell Culture](#)

ZBTB1 Antibody - Images



Western blot analysis of ZBTB1 in HepG2 lysate with ZBTB1 antibody at (A) 1 and (B) 2 μ g/mL.



Immunohistochemistry of ZBTB1 in mouse brain tissue with ZBTB1 antibody at 2.5 μ g/mL.

ZBTB1 Antibody - Background

ZBTB1 Antibody: ZBTB1 is a zinc finger protein that also contains BTB (BR-C, ttk and bab) domain. While little is known about this protein or the related protein ZBTB2, its expression is known to be

down-regulated in human bronchial epithelial cells in response to the presence of Vanadium. Recently, expression of variant ZBTB1 protein has been associated with increased age-related macular degeneration.

ZBTB1 Antibody - References

Strausberg RL, Feingold EA, Grouse LH, et al. Generation and initial analysis of more than 15,000 full-length human and mouse cDNA sequences. Proc. Natl. Acad. Sci. USA 2002; 99:16899-903.
Li Z, Stonehuerner J, Devlin RB, et al. Discrimination of Vanadium from Zinc using gene profiling in human bronchial epithelial cells. Envir. Health Perspect. 2005; 113:1747-54.
Zhang H, Morrison MA, Dewan A, et al. The NEI/NCBI dbGAP database: genotypes and haplotypes that may specifically predispose to risk of neovascular age-related macular degeneration. BMC Med. Genet. 2008; 9:51.