

ZBTB2 Antibody
Catalog # ASC10823**Specification**

ZBTB2 Antibody - Product Information

| | |
|-------------------|---|
| Application | WB |
| Primary Accession | Q9Y2K1 |
| Other Accession | Q8N680 , 22890 |
| Reactivity | Human, Mouse, Rat |
| Host | Rabbit |
| Clonality | Polyclonal |
| Isotype | IgG |
| Application Notes | ZBTB2 antibody can be used for detection of ZBTB2 by Western blot at 1 µg/mL. |

ZBTB2 Antibody - Additional InformationGene ID **22890****Target/Specificity**

ZBTB2 antibody was raised against a 14 amino acid synthetic peptide near the center of human ZBTB2.

The immunogen is located within amino acids 140 - 190 of ZBTB2.

Reconstitution & Storage

ZBTB2 antibody can be stored at 4°C for three months and -20°C, stable for up to one year. As with all antibodies care should be taken to avoid repeated freeze thaw cycles. Antibodies should not be exposed to prolonged high temperatures.

Precautions

ZBTB2 Antibody is for research use only and not for use in diagnostic or therapeutic procedures.

ZBTB2 Antibody - Protein Information**Name** ZBTB1**Synonyms** KIAA0997**Function**

Acts as a transcriptional repressor (PubMed:20797634). Represses cAMP-responsive element (CRE)-mediated transcriptional activation (PubMed:21706167). In addition, has a role in translesion DNA synthesis. Requires for UV-inducible RAD18 loading, PCNA monoubiquitination, POLH recruitment to replication factories and efficient translesion DNA synthesis (PubMed:24657165). Plays a key role in the transcriptional regulation of T lymphocyte development (By similarity).

Cellular Location

Nucleus. Nucleus, nucleoplasm. Note=Localized in dot-like structures in the nucleus

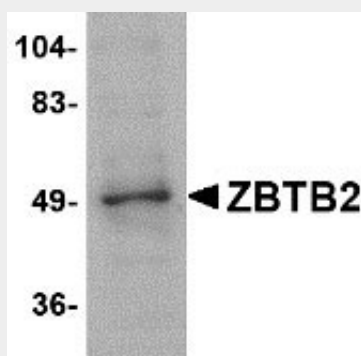
(PubMed:21706167). Colocalized with SMRT in nuclear bodies (PubMed:20797634). The sumoylated form is preferentially located in the nucleoplasm outside the nuclear bodies(PubMed:20797634)

ZBTB2 Antibody - Protocols

Provided below are standard protocols that you may find useful for product applications.

- [Western Blot](#)
- [Blocking Peptides](#)
- [Dot Blot](#)
- [Immunohistochemistry](#)
- [Immunofluorescence](#)
- [Immunoprecipitation](#)
- [Flow Cytometry](#)
- [Cell Culture](#)

ZBTB2 Antibody - Images



Western blot analysis of ZBTB2 in PC-3 cell lysate with ZBTB2 antibody at 1 µg/mL.

ZBTB2 Antibody - Background

ZBTB2 Antibody: ZBTB2 is a zinc finger protein that also contains BTB (BR-C, ttk and bab) domain. While little is known about this protein or the related protein ZBTB1, ZBTB2 is thought to be phosphorylated in response to the DNA damage, probably by either ATM or ATR. At least two isoforms of ZBTB2 are known to exist.

ZBTB2 Antibody - References

Strausberg RL, Feingold EA, Grouse LH, et al. Generation and initial analysis of more than 15,000 full-length human and mouse cDNA sequences. Proc. Natl. Acad. Sci. USA2002; 99:16899-903.
Matsuoka S, Ballif BA, Smogorzewska A, et al. ATM and ATR substrate analysis reveals extensive protein networks responsive to DNA damage. Science2007; 1160-1166.