

**KLRA3 Antibody**  
**Catalog # ASC10836****Specification**

---

**KLRA3 Antibody - Product Information**

Application	WB
Primary Accession	<a href="#">Q64329</a>
Other Accession	<a href="#">AAI32525</a> , <a href="#">124376782</a>
Reactivity	Mouse, Rat
Host	Rabbit
Clonality	Polyclonal
Isotype	IgG
Application Notes	KLRA3 antibody can be used for detection of KLRA3 by Western blot at 2 µg/mL.

**KLRA3 Antibody - Additional Information**Gene ID **16634****Target/Specificity**

Klra3; This antibody may cross-react with other LY49 receptors.

**Reconstitution & Storage**

KLRA3 antibody can be stored at 4°C for three months and -20°C, stable for up to one year. As with all antibodies care should be taken to avoid repeated freeze thaw cycles. Antibodies should not be exposed to prolonged high temperatures.

**Precautions**

KLRA3 Antibody is for research use only and not for use in diagnostic or therapeutic procedures.

**KLRA3 Antibody - Protein Information****Name** Klra3**Synonyms** Ly-49c, Ly49C**Function**

Receptor on natural killer (NK) cells for class I MHC.

**Cellular Location**

Membrane; Single-pass type II membrane protein.

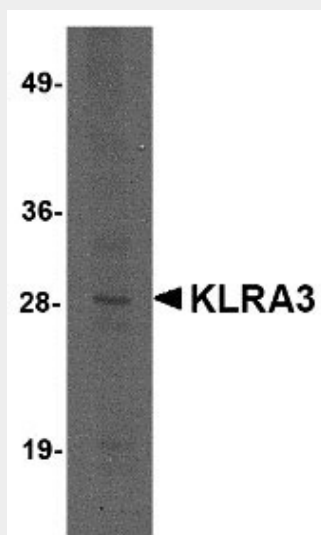
**KLRA3 Antibody - Protocols**

Provided below are standard protocols that you may find useful for product applications.

- [Western Blot](#)

- [Blocking Peptides](#)
- [Dot Blot](#)
- [Immunohistochemistry](#)
- [Immunofluorescence](#)
- [Immunoprecipitation](#)
- [Flow Cytometry](#)
- [Cell Culture](#)

### KLRA3 Antibody - Images



Western blot analysis of KLRA3 in mouse brain tissue lysate with KLRA3 antibody at 2 µg/mL.

### KLRA3 Antibody - Background

**KLRA3 Antibody:** KLRA3 (also known as Ly49C) is a member of the LY49 family of receptors in Natural Killer (NK) cells that bind to major histocompatibility complex (MHC) class 1. These proteins are classified as either activating or inhibitory receptors based on whether they possess an immunoreceptor tyrosine-based inhibitory motif (ITIM) in their cytoplasmic region (for inhibitory receptors), or an immunoreceptor tyrosine-based activation motif (ITAM) that transmits activating signals resulting in phosphorylation of several substrates. KLRA3 is thought to be an inhibitory receptor, recognizing peptide-receptive H-2Kb.

### KLRA3 Antibody - References

Gosselin P, Lusignan Y, Brennan J, et al. The NK2.1 receptor is encoded by Ly-49C and its expression is regulated by MHC class I alleles. *Int. Immunol.*1997; 533-40.  
 Smith HR, Karlhofer FM, and Yokoyama WM. Ly-49 multigene family expressed by IL-2-activated NK cells. *J. Immunol.*1994; 153:1068-79.  
 Brennan J, Mager D, Jefferies W, et al. Expression of different members of the Ly-49 gene family defines distinct natural killer cell subsets and cell adhesion properties. *J. Exp. Med.*1994; 180:2287-95.  
 Su R-C, Kung SK, Silver ET, et al. Ly-49CB6 NK inhibitory receptor recognizes peptide-receptive H-2Kb. *J. Immunol.*1999; 163:5319-30.