

ZIP11 Antibody
Catalog # ASC10840**Specification**

ZIP11 Antibody - Product Information

Application	WB, IHC
Primary Accession	Q8N1S5
Other Accession	EAW89107 , 119609513
Reactivity	Human, Mouse, Rat
Host	Rabbit
Clonality	Polyclonal
Isotype	IgG
Application Notes	ZIP11 antibody can be used for detection of ZIP11 by Western blot at 1 - 2 µg/mL. Antibody can also be used for immunohistochemistry starting at 2.5 µg/mL.

ZIP11 Antibody - Additional InformationGene ID **201266****Target/Specificity**

SLC39A11; This antibody will not cross-react with the zinc transporter ZIP10.

Reconstitution & Storage

ZIP11 antibody can be stored at 4°C for three months and -20°C, stable for up to one year. As with all antibodies care should be taken to avoid repeated freeze thaw cycles. Antibodies should not be exposed to prolonged high temperatures.

Precautions

ZIP11 Antibody is for research use only and not for use in diagnostic or therapeutic procedures.

ZIP11 Antibody - Protein Information**Name** SLC39A11**Synonyms** C17orf26, ZIP11**Function**

Zinc importer that regulates cytosolic zinc concentrations either via zinc influx from the extracellular compartment or efflux from intracellular organelles such as Golgi apparatus. May transport copper ions as well. The transport mechanism remains to be elucidated.

Cellular Location

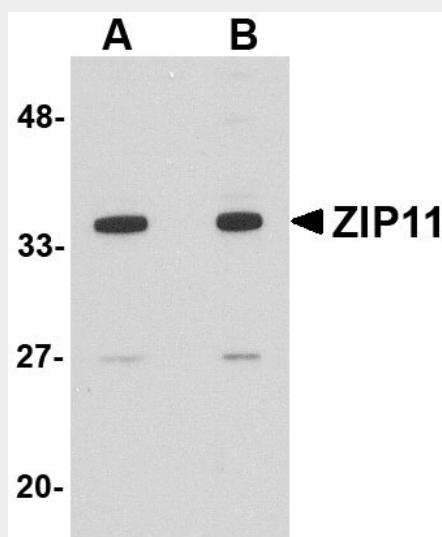
Cell membrane {ECO:0000250|UniProtKB:Q8BWY7}; Multi-pass membrane protein {ECO:0000250|UniProtKB:Q8BWY7}. Nucleus {ECO:0000250|UniProtKB:Q8BWY7}. Cytoplasm {ECO:0000250|UniProtKB:Q8BWY7}. Golgi apparatus {ECO:0000250|UniProtKB:Q8BWY7}

ZIP11 Antibody - Protocols

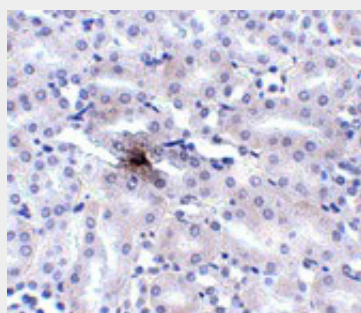
Provided below are standard protocols that you may find useful for product applications.

- [Western Blot](#)
- [Blocking Peptides](#)
- [Dot Blot](#)
- [Immunohistochemistry](#)
- [Immunofluorescence](#)
- [Immunoprecipitation](#)
- [Flow Cytometry](#)
- [Cell Culture](#)

ZIP11 Antibody - Images



Western blot analysis of ZIP11 in mouse kidney tissue lysate with ZIP11 antibody at (A) 1 and (B) 2 μ g/mL.



Immunohistochemistry of ZIP11 in mouse kidney tissue with ZIP11 antibody at 2.5 μ g/mL.

ZIP11 Antibody - Background

ZIP11 Antibody: ZIP11, also known as Slc39A11, is a member of the broader ZIP family of multi-transmembrane domain metal ion transporters. Zinc is an essential ion for cells and plays significant roles in the growth, development, and differentiation. Members of the ZIP family generally transport metal ions from the cell exterior or lumen of intracellular organelles into the cytoplasm, as opposed to the ZnT (SLC30) family of zinc transporters that serve to reduce

intracellular zinc availability by promoting zinc efflux from cells or into intracellular vesicles. At least three isoforms of ZIP11 are known to exist.

ZIP11 Antibody - References

Eide DJ. The SLC39 family of metal ion transporters. *Pflugers Arch.*2004; 447:796-800.
Taylor KM and Nicolson RI. The LZT proteins; the LIV-1 subfamily of zinc transporters. *Biochim. Biophys. Acta.*2003; 1611:16-30.
Liuzzi JP and Cousins RJ. Mammalian zinc transporters. *Annu. Rev. Nutr.*2004; 24:151-72.