

KLRA2 Antibody
Catalog # ASC10848**Specification**

KLRA2 Antibody - Product Information

Application	WB, IHC
Primary Accession	Q60660
Other Accession	Q60660 , 2497636
Reactivity	Mouse, Rat
Host	Rabbit
Clonality	Polyclonal
Isotype	IgG
Application Notes	KLRA2 antibody can be used for detection of KLRA2 by Western blot at 0.5 - 1 µg/mL. Antibody can also be used for immunohistochemistry starting at 2.5 µg/mL. For immunofluorescence start at 20 µg/mL.

KLRA2 Antibody - Additional Information

Gene ID	16633
Target/Specificity	
Klra2;	

Reconstitution & Storage

KLRA2 antibody can be stored at 4°C for three months and -20°C, stable for up to one year. As with all antibodies care should be taken to avoid repeated freeze thaw cycles. Antibodies should not be exposed to prolonged high temperatures.

Precautions

KLRA2 Antibody is for research use only and not for use in diagnostic or therapeutic procedures.

KLRA2 Antibody - Protein Information

Name Klra2

Synonyms Ly49-b, Ly49b

Function

Receptor on natural killer (NK) cells for class I MHC.

Cellular Location

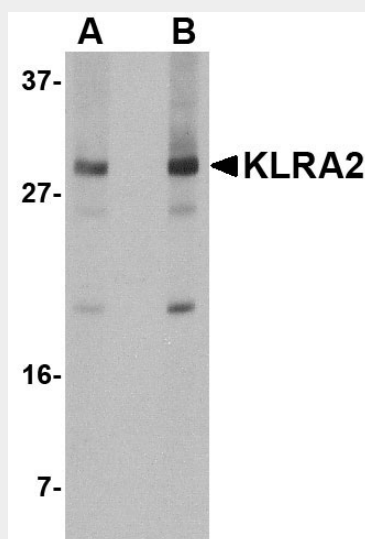
Membrane; Single-pass type II membrane protein.

KLRA2 Antibody - Protocols

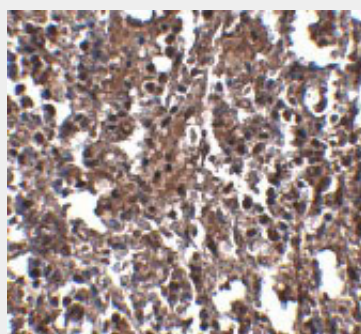
Provided below are standard protocols that you may find useful for product applications.

- [Western Blot](#)
- [Blocking Peptides](#)
- [Dot Blot](#)
- [Immunohistochemistry](#)
- [Immunofluorescence](#)
- [Immunoprecipitation](#)
- [Flow Cytometry](#)
- [Cell Culture](#)

KLRA2 Antibody - Images



Western blot analysis of KLRA2 in mouse spleen tissue lysate with KLRA2 antibody at (A) 0.5 and (B) 1 µg/mL.



Immunohistochemistry of KLRA2 in mouse spleen tissue with KLRA2 antibody at 2.5 µg/mL.

KLRA2 Antibody - Background

KLRA2 Antibody: KLRA2 (also known as Ly49B) is a member of the LY49 family of receptors in Natural Killer (NK) cells that bind to major histocompatibility complex (MHC) class 1. These proteins are classified as either activating or inhibitory receptors based on whether they possess an immunoreceptor tyrosine-based inhibitory motif (ITIM) in their cytoplasmic region (for inhibitory receptors), or an immunoreceptor tyrosine-based activation motif (ITAM) that transmits activating signals resulting in phosphorylation of several substrates. KLRA2 is thought to be an inhibitory receptor and associates with the protein tyrosine phosphatases SHP1, SHP2, and SHIP in transfected cells. This antibody is predicted to not cross-react with other LY49 receptors.

KLRA2 Antibody - References

Gosselin P, Lusignan Y, Brennan J, et al. The NK2.1 receptor is encoded by Ly-49C and its expression is regulated by MHC class I alleles. *Int. Immunol.*1997; 533-40.

Smith HR, Karlhofer FM, and Yokoyama WM. Ly-49 multigene family expressed by IL-2-activated NK cells. *J. Immunol.*1994; 153:1068-79.

Brennan J, Mager D, Jefferies W, et al. Expression of different members of the Ly-49 gene family defines distinct natural killer cell subsets and cell adhesion properties. *J. Exp. Med.*1994; 180:2287-95.

Saleh A, Davies GE, Pascal V, et al. Identification of probabilistic transcriptional switches in the Ly49 gene cluster: a eukaryotic mechanism for selective gene activation. *Immunity*2004; 21:55-66.