

**LRFN2 Antibody**  
**Catalog # ASC10863****Specification**

---

**LRFN2 Antibody - Product Information**

Application	WB, IHC, IF
Primary Accession	<a href="#">Q9ULH4</a>
Other Accession	<a href="#">Q9ULH4</a> , <a href="#">62286951</a>
Reactivity	Human, Mouse, Rat
Host	Rabbit
Clonality	Polyclonal
Isotype	IgG
Application Notes	LRFN2 antibody can be used for detection of LRFN2 by Western blot at 1 - 2 µg/mL. Antibody can also be used for immunohistochemistry starting at 2.5 µg/mL. For immunofluorescence start at 20 µg/mL.

**LRFN2 Antibody - Additional Information**Gene ID **57497****Target/Specificity**

LRFN2; At least two isoforms of LRFN2 are known to exist. This antibody is predicted to not cross-react with other members of the LRFN family.

**Reconstitution & Storage**

LRFN2 antibody can be stored at 4°C for three months and -20°C, stable for up to one year. As with all antibodies care should be taken to avoid repeated freeze thaw cycles. Antibodies should not be exposed to prolonged high temperatures.

**Precautions**

LRFN2 Antibody is for research use only and not for use in diagnostic or therapeutic procedures.

**LRFN2 Antibody - Protein Information****Name** LRFN2**Synonyms** KIAA1246, SALM1**Function**

Promotes neurite outgrowth in hippocampal neurons. Enhances the cell surface expression of 2 NMDA receptor subunits GRIN1 and GRIN2A. May play a role in redistributing DLG4 to the cell periphery (By similarity).

**Cellular Location**

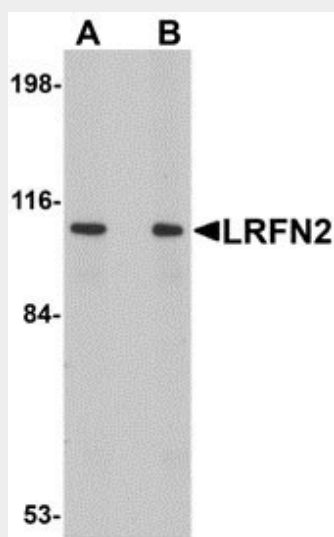
Membrane; Single-pass type I membrane protein. Synapse. Postsynaptic cell membrane

## LRFN2 Antibody - Protocols

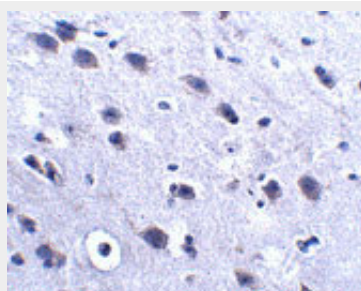
Provided below are standard protocols that you may find useful for product applications.

- [Western Blot](#)
- [Blocking Peptides](#)
- [Dot Blot](#)
- [Immunohistochemistry](#)
- [Immunofluorescence](#)
- [Immunoprecipitation](#)
- [Flow Cytometry](#)
- [Cell Culture](#)

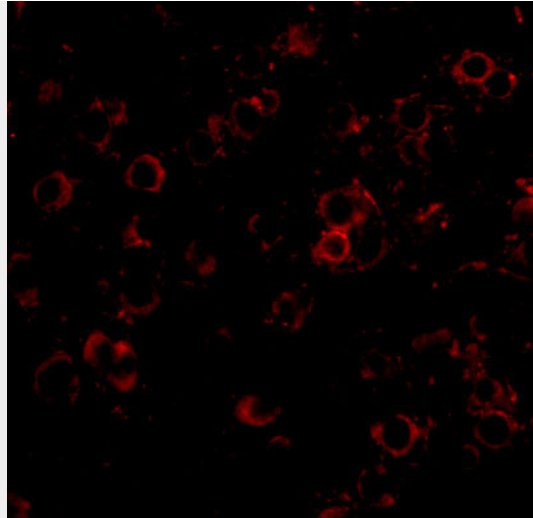
## LRFN2 Antibody - Images



Western blot analysis of LRFN2 in rat brain lysate with LRFN2 antibody at (A) 1 and (B) 2 µg/mL.



Immunohistochemistry of LRFN2 in mouse brain tissue with LRFN2 antibody at 2.5 µg/mL.



Immunofluorescence of LRFN2 in mouse brain tissue with LRFN2 antibody at 20 µg/mL.

### **LRFN2 Antibody - Background**

**LRFN2 Antibody:** LRFN2 is one of a family of five transmembrane glycoproteins that are highly expressed in neuronal tissues. LRFN proteins share leucine-rich repeat (LRR)-immunoglobulin-like (Ig)-fibronectin type III (Fn)-transmembrane domain structure with other members of the LRR-Ig-Fn protein superfamily such as the Slitrk family of proteins. Expression of LRFN1, -3, and -4 mRNA was detected in embryonic neuronal cells, while Lrfn2 and Lrfn5 expression was primarily restricted to more mature cells. LRFN1, -2, and -4 bound to PDZ domains of postsynaptic PSD95, re-distributing PSD95 to the cell periphery. It has been suggested that the Lrfn proteins play a role in the developing and/or mature vertebrate nervous system.

### **LRFN2 Antibody - References**

Morimura N, Inoue T, Katayama K, et al. Comparative analysis of structure, expression and PSD95-binding capacity of Lrfn, a novel family of neuronal transmembrane proteins. *Gene* 2006; 380:72-83.  
Kobe B and Kajava AV. The leucine-rich repeat as a protein recognition motif. *Curr. Opin. Struct. Biol.* 2001; 11:725-32.  
Aruga J and Mikoshiba K. Identification and characterization of Slitrk, a novel transmembrane protein family controlling neurite outgrowth. *Mol. Cell Neurosci.* 2003; 24:117-29.