

PCDH18 Antibody
Catalog # ASC10870**Specification**

PCDH18 Antibody - Product Information

Application	WB, IHC, IF
Primary Accession	O9HCL0
Other Accession	NP_061908 , 14589929
Reactivity	Human, Mouse, Rat
Host	Rabbit
Clonality	Polyclonal
Isotype	IgG
Application Notes	PCDH18 antibody can be used for detection of PCDH18 by Western blot at 2 µg/mL. Antibody can also be used for immunohistochemistry starting at 2.5 µg/mL. For immunofluorescence start at 20 µg/mL.

PCDH18 Antibody - Additional InformationGene ID **54510****Target/Specificity**

PCDH18; At least three isoforms of PCDH18 are known to exist. This antibody is predicted to not cross-react with PCDH12.

Reconstitution & Storage

PCDH18 antibody can be stored at 4°C for three months and -20°C, stable for up to one year. As with all antibodies care should be taken to avoid repeated freeze thaw cycles. Antibodies should not be exposed to prolonged high temperatures.

Precautions

PCDH18 Antibody is for research use only and not for use in diagnostic or therapeutic procedures.

PCDH18 Antibody - Protein Information**Name** PCDH18**Synonyms** KIAA1562**Function**

Potential calcium-dependent cell-adhesion protein.

Cellular Location

Cell membrane; Single-pass type I membrane protein

Tissue Location

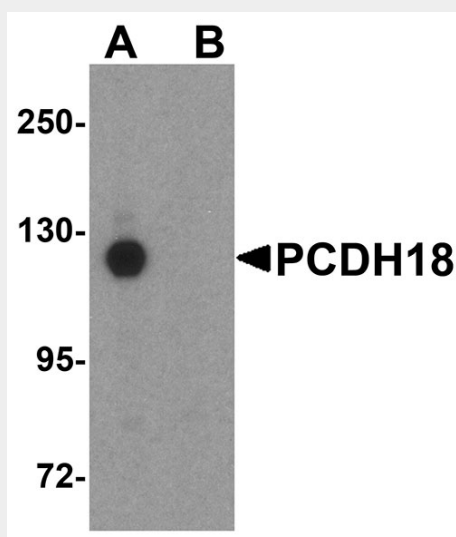
Expressed in all tissues, with highest expression in lung and ovary.

PCDH18 Antibody - Protocols

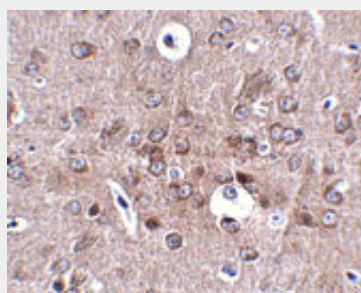
Provided below are standard protocols that you may find useful for product applications.

- [Western Blot](#)
- [Blocking Peptides](#)
- [Dot Blot](#)
- [Immunohistochemistry](#)
- [Immunofluorescence](#)
- [Immunoprecipitation](#)
- [Flow Cytometry](#)
- [Cell Culture](#)

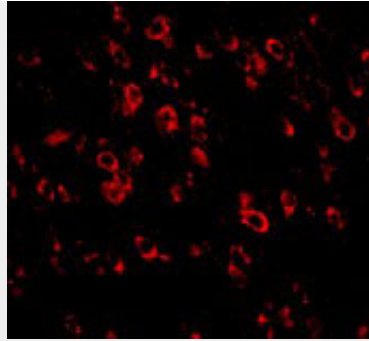
PCDH18 Antibody - Images



Western blot analysis of PCDH18 in HepG2 cell lysate with PCDH18 antibody at 1 μ g/mL in (A) the absence and (B) the presence of blocking peptide.



Immunohistochemistry of PCDH18 in mouse brain tissue with PCDH18 antibody at 2.5 μ g/mL.



Immunofluorescence of PCDH18 in Mouse Brain cells with PCDH18 antibody at 20 µg/mL.

PCDH18 Antibody - Background

PCDH18 Antibody: Protocadherins comprise the largest group within the cadherin family of calcium-dependent cell-cell adhesion molecules. Protocadherin 18 (PCDH18) was initially identified through screening of human and mouse ESTs using conserved cytoplasmic domain motifs. Tissue screening revealed PCDH18 broad expression in tissues such as brain, liver, heart, kidney, lung, and trachea. PCDH18 expression is also temporally and spatially regulated in the mouse embryonic brain and interacts with Disabled-1, an intracellular adapter protein involved in neuronal migration and cell positioning during mammalian brain development. PCDH18 was also found to be expressed in the developing zebrafish neural tube and central nervous system, lending support to the hypothesis that PCDH18 may play a role during brain development.

PCDH18 Antibody - References

Frank M and Kemler R. Protocadherins. *Curr. Opin. Cell Biol.*2002; 14:557-62.
Wolverton T and Lalande M. Identification and characterization of three members of a novel subclass of protocadherins. *Genomics*2001; 76:66-72.
Homayouni R, Rice DS, and Curran T. Disabled-1 interacts with a novel developmentally regulated protocadherin. *Biochem. Biophys. Res. Commun.*2001; 289:539-47.
Kubota F, Murakami T, Tajika Y, et al. Expression of protocadherin 18 in the CNS and pharyngeal arches of zebrafish embryos. *Int. J. Dev. Biol.*2008; 52:397-405.