

ApoA1 Antibody
Catalog # ASC10873**Specification**

ApoA1 Antibody - Product Information

Application	WB, IF, E
Primary Accession	P02647
Other Accession	P02647 , 113992
Reactivity	Human, Mouse, Rat
Host	Chicken
Clonality	Polyclonal
Isotype	IgY
Application Notes	ApoA1 antibody can be used for detection of ApoA1 by Western blot at 1 µg/mL. Antibody can also be used for immunofluorescence starting at 20 µg/mL. For immunofluorescence start at 20 µg/mL.

ApoA1 Antibody - Additional Information

Gene ID	335
Target/Specificity	
APOA1;	

Reconstitution & Storage

ApoA1 antibody can be stored at 4°C for three months and -20°C, stable for up to one year. As with all antibodies care should be taken to avoid repeated freeze thaw cycles. Antibodies should not be exposed to prolonged high temperatures.

Precautions

ApoA1 Antibody is for research use only and not for use in diagnostic or therapeutic procedures.

ApoA1 Antibody - Protein Information

Name APOA1 ([HGNC:600](#))

Function

Participates in the reverse transport of cholesterol from tissues to the liver for excretion by promoting cholesterol efflux from tissues and by acting as a cofactor for the lecithin cholesterol acyltransferase (LCAT). As part of the SPAP complex, activates spermatozoa motility.

Cellular Location

Secreted.

Tissue Location

Major protein of plasma HDL, also found in chylomicrons. Synthesized in the liver and small intestine. The oxidized form at Met-110 and Met-136 is increased in individuals with increased risk for coronary artery disease, such as in carrier of the eNOSa/b genotype and exposure to cigarette

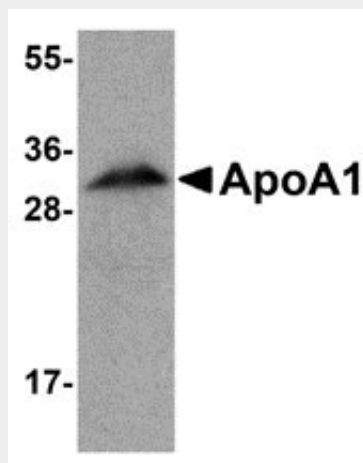
smoking. It is also present in increased levels in aortic lesions relative to native ApoA-I and increased levels are seen with increasing severity of disease

ApoA1 Antibody - Protocols

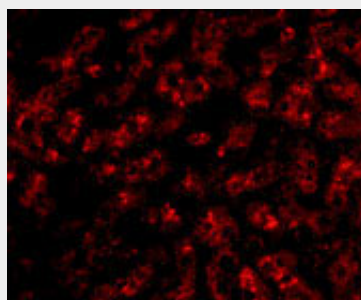
Provided below are standard protocols that you may find useful for product applications.

- [Western Blot](#)
- [Blocking Peptides](#)
- [Dot Blot](#)
- [Immunohistochemistry](#)
- [Immunofluorescence](#)
- [Immunoprecipitation](#)
- [Flow Cytometry](#)
- [Cell Culture](#)

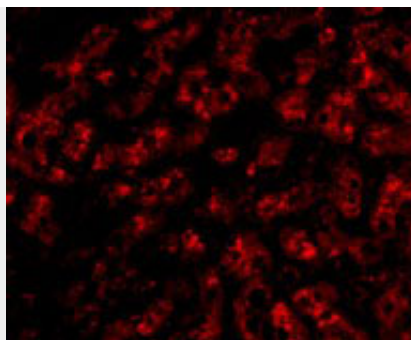
ApoA1 Antibody - Images



Western blot analysis of ApoA1 in human liver tissue lysate with ApoA1 antibody at 1 μ g/mL.



Immunofluorescence of ApoA1 in human liver tissue with ApoA1 antibody at 20 μ g/mL.



Immunofluorescence of ApoA1 in Human Liver cells with ApoA1 antibody at 20 µg/mL.

ApoA1 Antibody - Background

ApoA1 Antibody: Apolipoprotein A1 (ApoA1) is the major protein component of high density lipoprotein (HDL) in plasma. ApoA1 is synthesized in the liver and small intestine and promotes cholesterol efflux from tissues to the liver for excretion. It is a cofactor for lecithin cholesterolacyltransferase (LCAT), the enzyme responsible for the formation of most plasma cholesteryl esters. Defects in ApoA1 are associated with HDL deficiency, Tangier disease, and systemic non-neuropathic amyloidosis.

ApoA1 Antibody - References

Sorci-Thomas MG, Prack MM, Dashti N, et al. Differential effects of dietary fat on the tissue-specific expression of the apolipoprotein A-I gene: relationship to plasma concentration of high density lipoproteins. *J. Lipid Res.*1989; 30:1397-403.

Lai C-Q, Parnell LD, and Ordovas JM. The APOA1/C3/A4/A5 gene cluster, lipid metabolism and cardiovascular disease risk. *Curr. Opin. Lipid.*2005; 16:153-66.