

Siglec11 Antibody
Catalog # ASC10898**Specification**

Siglec11 Antibody - Product Information

Application	WB, IHC, IF
Primary Accession	Q96RL6
Other Accession	NP_443116 , 205830470
Reactivity	Human
Host	Rabbit
Clonality	Polyclonal
Isotype	IgG
Application Notes	Siglec11 antibody can be used for detection of Siglec11 by Western blot at 1 µg/mL. Despite its predicted size, Siglec11 migrates at a higher than expected molecular weight in SDS-PAGE. Antibody can also be used for immunohistochemistry starting at 5 µg/mL. For immunofluorescence start at 20 µg/mL.

Siglec11 Antibody - Additional Information

Gene ID	114132
Target/Specificity	
SIGLEC11;	

Reconstitution & Storage

Siglec11 antibody can be stored at 4°C for three months and -20°C, stable for up to one year. As with all antibodies care should be taken to avoid repeated freeze thaw cycles. Antibodies should not be exposed to prolonged high temperatures.

Precautions

Siglec11 Antibody is for research use only and not for use in diagnostic or therapeutic procedures.

Siglec11 Antibody - Protein Information

Name SIGLEC11

Function

Putative adhesion molecule that mediates sialic-acid dependent binding to cells. Preferentially binds to alpha-2,8-linked sialic acid. The sialic acid recognition site may be masked by cis interactions with sialic acids on the same cell surface. In the immune response, may act as an inhibitory receptor upon ligand induced tyrosine phosphorylation by recruiting cytoplasmic phosphatase(s) via their SH2 domain(s) that block signal transduction through dephosphorylation of signaling molecules.

Cellular Location

Membrane; Single-pass type I membrane protein.

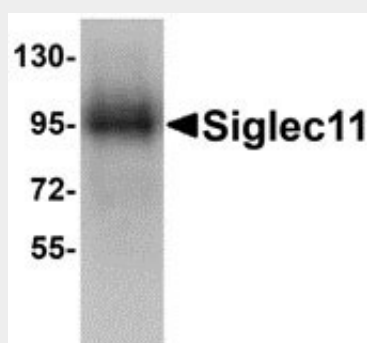
Tissue Location

Expressed by macrophages in various tissues including Kupffer cells. Also found in brain microglia

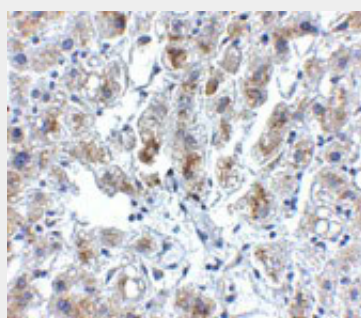
Siglec11 Antibody - Protocols

Provided below are standard protocols that you may find useful for product applications.

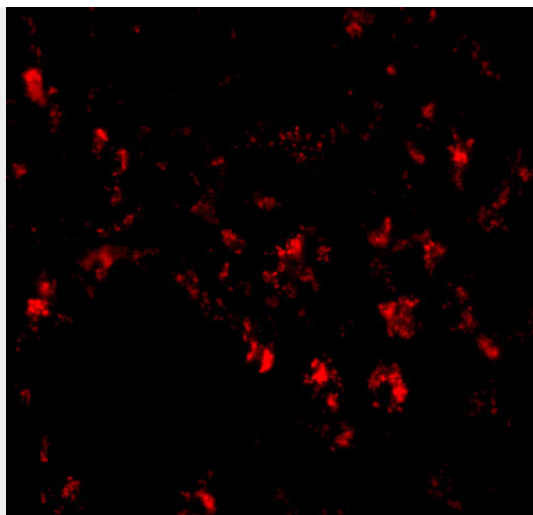
- [Western Blot](#)
- [Blocking Peptides](#)
- [Dot Blot](#)
- [Immunohistochemistry](#)
- [Immunofluorescence](#)
- [Immunoprecipitation](#)
- [Flow Cytometry](#)
- [Cell Culture](#)

Siglec11 Antibody - Images

Western blot analysis of Siglec11 in HepG2 cell lysate with Siglec11 antibody at 1 µg/mL.



Immunohistochemistry of Siglec11 in human liver tissue with Siglec11 antibody at 5 µg/mL.



Immunofluorescence of SIGLEC11 in human liver tissue with SIGLEC11 antibody at 20 µg/mL.

Siglec11 Antibody - Background

Siglec11 Antibody: Siglecs are sialic acid-binding lectins of the immunoglobulin superfamily that are mainly expressed in cells of the hematopoietic system. Siglec11 is unlike other siglecs in that it binds specifically to alpha2-8-linked sialic acids and is not found in peripheral blood leukocytes but instead on macrophages of various tissues. Siglec11 is highly homologous to Siglec10 over their extracellular domain but not over their cytoplasmic domain, suggesting that Siglec11 arose through gene duplication followed by a recombination event involving another ancestral siglec gene. Following treatment of Siglec11-transfected cells with pervanadate, Siglec11 becomes tyrosine-phosphorylated and strongly associates with SHP-1 and SHP-2. At least five isoforms of Siglec11 are known to exist. Siglec11 antibody will not cross-react with Siglec10.

Siglec11 Antibody - References

Crocker PR and Varki A. Siglecs, sialic acids, and innate immunity. Trends Immunol.2001; 22:337-42.

Angata T, Kerr SC, Greaves DR, et al. Cloning and characterization of human siglec-11. A recently evolved signaling molecule that can interact with SHP-1 and SHP-2 and is expressed by tissue macrophages, including brain microglia. J. Biol. Chem.2002; 27:24466-74.