

ZCRB1 Antibody
Catalog # ASC10926**Specification**

ZCRB1 Antibody - Product Information

Application	WB, E
Primary Accession	Q8TBF4
Other Accession	NP_149105 , 51243065
Reactivity	Human, Mouse, Rat
Host	Rabbit
Clonality	Polyclonal
Isotype	IgG
Application Notes	ZCRB1 antibody can be used for detection of ZCRB1 by Western blot at 1 - 2 µg/mL.

ZCRB1 Antibody - Additional Information

Gene ID	85437
Target/Specificity	
ZCRB1;	

Reconstitution & Storage

ZCRB1 antibody can be stored at 4°C for three months and -20°C, stable for up to one year. As with all antibodies care should be taken to avoid repeated freeze thaw cycles. Antibodies should not be exposed to prolonged high temperatures.

Precautions

ZCRB1 Antibody is for research use only and not for use in diagnostic or therapeutic procedures.

ZCRB1 Antibody - Protein Information

Name ZCRB1

Cellular Location

Nucleus, nucleoplasm

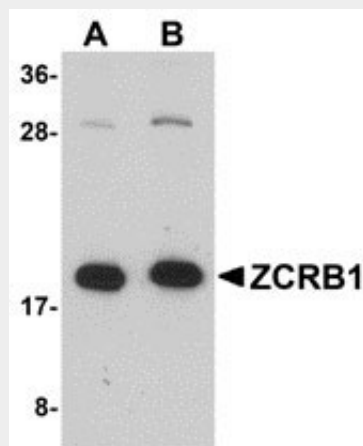
ZCRB1 Antibody - Protocols

Provided below are standard protocols that you may find useful for product applications.

- [Western Blot](#)
- [Blocking Peptides](#)
- [Dot Blot](#)
- [Immunohistochemistry](#)
- [Immunofluorescence](#)
- [Immunoprecipitation](#)

- [Flow Cytometry](#)
- [Cell Culture](#)

ZCRB1 Antibody - Images



Western blot analysis of ZCRB1 in Raji cell lysate with ZCRB1 antibody at (A) 1 and (B) 2 μ g/mL.

ZCRB1 Antibody - Background

ZCRB1 Antibody: ZCRB1 is a nuclear protein first identified in a differential display screen involving morphine-dependence-related genes. Its expression is increased following morphine treatment and has been observed to be elevated in HepG2 cells. ZCRB1 contains a CCHC-type zinc finger RNA-binding motif and can interact with the DBA-binding domain of the stem cell regulator C/EBP transcription factors. ZCRB1 was identified as one of the protein components of U11/U12 snRNPs, which are components of U12-type spliceosome and function as a molecular bridge connecting both ends of the intron, suggesting ZCRB1 may play a key role in U12-type splicing.

ZCRB1 Antibody - References

Wang H, Gao MX, Li L, et al. Isolation, expression, and characterization of the human ZCRB1 gene mapped to 12q2. *Genomics*2007; 89:59-69.
Trivedi AK, Bararia D, Christopheit M, et al. Proteomic identification of C/EBP-DBD multiprotein complex: JNK1 activates stem cell regulator C/EBPalpha by inhibiting its ubiquitination. *Oncogene*2007; 1789-801.
Will CL, Schneider C, Hossbach M, et al. The human 18S U11/U12 snRNP contains a set of novel proteins not found in the U2-dependent spliceosome. *RNA*2004; 10:929-41.