

TMEM214 Antibody
Catalog # ASC10957**Specification**

TMEM214 Antibody - Product Information

Application	WB, IF, ICC, E
Primary Accession	Q6NUQ4
Other Accession	NP_060197 , 134152721
Reactivity	Human, Mouse, Rat
Host	Rabbit
Clonality	Polyclonal
Isotype	IgG
Application Notes	TMEM214 antibody can be used for detection of TMEM214 by Western blot at 1 - 2 µg/mL. Antibody can also be used for immunocytochemistry starting at 5 µg/mL. For immunofluorescence start at 20 µg/mL.

TMEM214 Antibody - Additional Information

Gene ID	54867
Target/Specificity	
TMEM214;	

Reconstitution & Storage

TMEM214 antibody can be stored at 4°C for three months and -20°C, stable for up to one year. As with all antibodies care should be taken to avoid repeated freeze thaw cycles. Antibodies should not be exposed to prolonged high temperatures.

Precautions

TMEM214 Antibody is for research use only and not for use in diagnostic or therapeutic procedures.

TMEM214 Antibody - Protein Information

Name TMEM214

Function

Critical mediator, in cooperation with CASP4, of endoplasmic reticulum-stress induced apoptosis. Required for the activation of CASP4 following endoplasmic reticulum stress.

Cellular Location

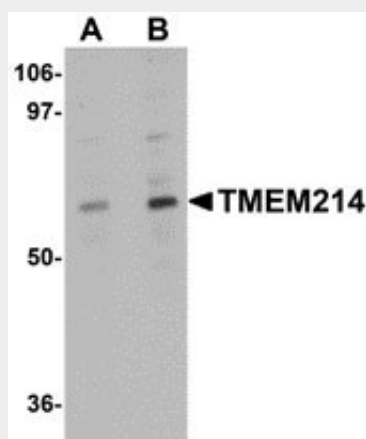
Endoplasmic reticulum membrane; Multi-pass membrane protein

TMEM214 Antibody - Protocols

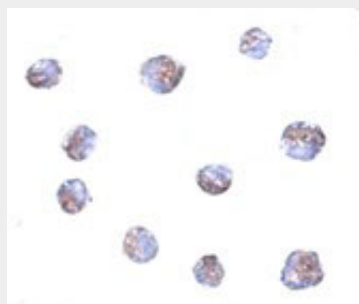
Provided below are standard protocols that you may find useful for product applications.

- [Western Blot](#)
- [Blocking Peptides](#)
- [Dot Blot](#)
- [Immunohistochemistry](#)
- [Immunofluorescence](#)
- [Immunoprecipitation](#)
- [Flow Cytometry](#)
- [Cell Culture](#)

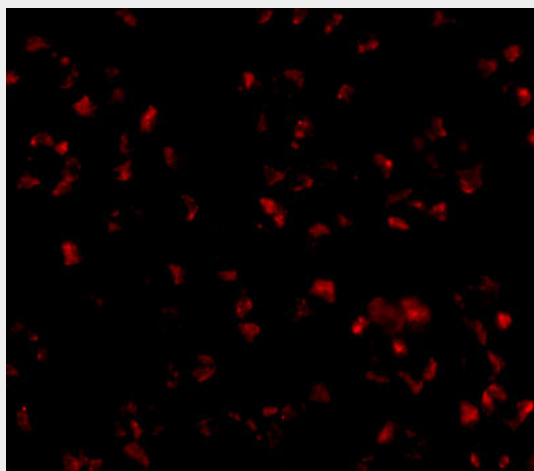
TMEM214 Antibody - Images



Western blot analysis of TMEM214 in A20 cell lysate with TMEM214 antibody at (A) 1 and (B) 2 $\mu\text{g/mL}$.



Immunocytochemistry of TMEM214 in A20 cells with TMEM214 antibody at 5 $\mu\text{g/mL}$.



Immunofluorescence of TMEM214 in A20 cells with TMEM214 antibody at 20 µg/mL.

TMEM214 Antibody - Background

TMEM214 Antibody: Transmembrane protein 214 (TMEM214) is a 77kD membrane protein which is widely expressed at high level. The gene encoding this protein maps to chromosome 2, at 2p23.3 TMEM214 interacts with LSM1, an SM-like protein, forming a stable heteromer present in tri-snRNP particles, which are important for pre-mRNA splicing. The detailed function of TMEM214 is still unknown, but a recent study showed that TMEM214 may be used to explore the contribution of human host factors of some infectious diseases such as Dengue fever, West Nile fever and yellow fever. Multiple isoforms of TMEM214 are known to exist.

TMEM214 Antibody - References

Wan D, Gong Y, Qin W, et al. Large-scale cDNA transfection screening for genes related to cancer development and progression. Proc. Natl. Acad. Sci. U S A 2004;101:15724-9.

Lehner B and Sanderson CM. A protein interaction framework for human mRNA degradation. Genome Res. 2004; 14:1315-23.

Sessions OM, Barrows NJ, Souza-Neto JA, et al. Discovery of insect and human dengue virus host factors. Nature 2009; 458:1047-50.