

Prosapip1 Antibody
Catalog # ASC10979**Specification**

Prosapip1 Antibody - Product Information

Application	WB, IHC, IF
Primary Accession	O60299
Other Accession	NP_055546 , 7662176
Reactivity	Human, Mouse, Rat
Host	Rabbit
Clonality	Polyclonal
Isotype	IgG
Application Notes	Prosapip1 antibody can be used for detection of Prosapip1 by Western blot at 1 µg/mL. Antibody can also be used for immunohistochemistry starting at 2.5 µg/mL. For immunofluorescence start at 20 µg/mL.

Prosapip1 Antibody - Additional Information

Gene ID	9762
Target/Specificity	
ProSAPiP1;	

Reconstitution & Storage

Prosapip1 antibody can be stored at 4°C for three months and -20°C, stable for up to one year. As with all antibodies care should be taken to avoid repeated freeze thaw cycles. Antibodies should not be exposed to prolonged high temperatures.

Precautions

Prosapip1 Antibody is for research use only and not for use in diagnostic or therapeutic procedures.

Prosapip1 Antibody - Protein Information

Name LZTS3 ([HGNC:30139](#))

Function

May be involved in promoting the maturation of dendritic spines, probably via regulating SIPA1L1 levels at the postsynaptic density of synapses.

Cellular Location

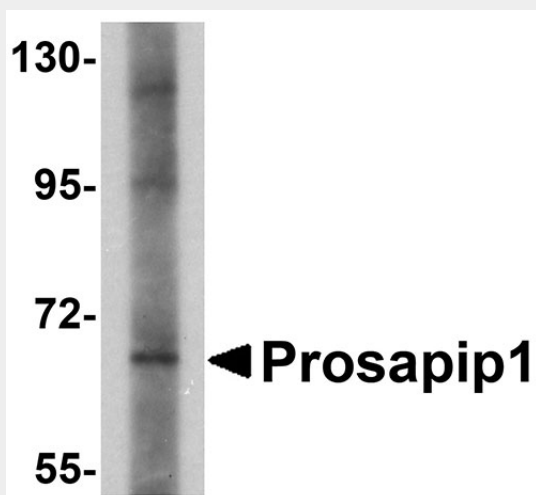
Synapse {ECO:0000250|UniProtKB:Q8K1Q4}. Postsynaptic density {ECO:0000250|UniProtKB:Q8K1Q4}. Cell projection, dendritic spine {ECO:0000250|UniProtKB:Q8K1Q4}. Cell projection, dendrite {ECO:0000250|UniProtKB:Q8K1Q4}. Cytoplasm, cytoskeleton {ECO:0000250|UniProtKB:Q8K1Q4}. Note=Rather found at excitatory than inhibitory synapses. {ECO:0000250|UniProtKB:Q8K1Q4}

Prosapip1 Antibody - Protocols

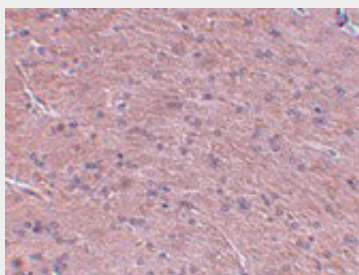
Provided below are standard protocols that you may find useful for product applications.

- [Western Blot](#)
- [Blocking Peptides](#)
- [Dot Blot](#)
- [Immunohistochemistry](#)
- [Immunofluorescence](#)
- [Immunoprecipitation](#)
- [Flow Cytometry](#)
- [Cell Culture](#)

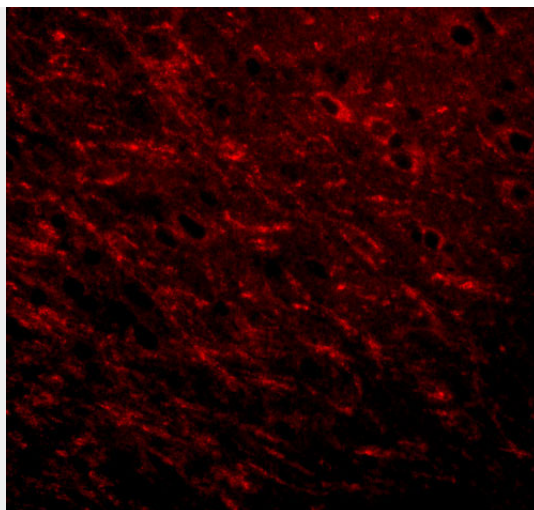
Prosapip1 Antibody - Images



Western blot analysis of Prosapip1 in SK-N-SH cell lysate with Prosapip1 antibody at 1 μ g/mL.



Immunohistochemistry of Prosapip1 in rat brain tissue with Prosapip1 antibody at 2.5 μ g/mL.



Immunofluorescence of Prosapip 1 in rat brain tissue with Prosapip 1 antibody at 20 µg/mL.

Prosapip1 Antibody - Background

Prosapip1 Antibody: Prosapip1 is a binding partner of the postsynaptic density (PSD) protein ProSAP2/Shank3, a major scaffolding protein in excitatory brain synapses. Prosapip1 is thought to bind ProSAP2/Shank3 through ProSAP2/Shank3's PDZ domain and link it in turn to the Spine-associated Rap-Gap (SPAR). Prosapip1 shares significant homology with another PSD protein, PSD-Zip70, with both coding for a Fez1 domain that can be found in a total of four related protein, forming a novel family of scaffolding molecules termed 'Fezzins'. Recent studies show that Prosapip1 can be found in endocrine cells in which it is localized primarily in the hormone-storing compartment of these cells, suggesting that Prosapip1 may have other functions in non-neuronal cells.

Prosapip1 Antibody - References

Wendholt D, Spilker C, Schmitt A, et al. ProSAP-interacting protein 1 (ProSAPiP1), a novel protein of the postsynaptic density that links the spine-associated Rap-Gap (SPAR) to the scaffolding protein proSAP2/Shank3. J. Biol. Chem.2006; 281:13805-16.
Redecker P, Bockmann J, and Bockers TM. Secretory granules of hypophyseal and pancreatic endocrine cells contain proteins of the neuronal postsynaptic density. Cell Tissue Res.2007; 328:49-55.