

**CLPH Antibody**  
**Catalog # ASC11021****Specification**

---

**CLPH Antibody - Product Information**

Application	WB, IHC-P, E
Primary Accession	<a href="#">Q96KC9</a>
Other Accession	<a href="#">NP_149113</a> , <a href="#">90652863</a>
Reactivity	Human, Rat
Host	Rabbit
Clonality	Polyclonal
Isotype	IgG
Application Notes	CLPH antibody can be used for detection of CLPH by Western blot at 1 µg/mL. Antibody can also be used for immunohistochemistry starting at 5 µg/mL.

**CLPH Antibody - Additional Information**

Gene ID	85438
Target/Specificity	
C4orf35;	

**Reconstitution & Storage**

CLPH antibody can be stored at 4°C for three months and -20°C, stable for up to one year. As with all antibodies care should be taken to avoid repeated freeze thaw cycles. Antibodies should not be exposed to prolonged high temperatures.

**Precautions**

CLPH Antibody is for research use only and not for use in diagnostic or therapeutic procedures.

**CLPH Antibody - Protein Information**

**Name** CABS1

**Synonyms** C4orf35

**Function**

Calcium-binding protein (By similarity). Essential for maintaining the structural integrity of the sperm flagella (By similarity).

**Cellular Location**

Cytoplasm {ECO:0000250|UniProtKB:Q68FX6}. Mitochondrion inner membrane {ECO:0000250|UniProtKB:Q68FX6}. Cell projection, cilium, flagellum {ECO:0000250|UniProtKB:Q8C633}. Cytoplasmic vesicle, secretory vesicle, acrosome {ECO:0000250|UniProtKB:Q8C633}. Note=Mostly cytoplasmic, but associated with the mitochondrial inner membrane during the last steps of spermatid differentiation. Localizes to the

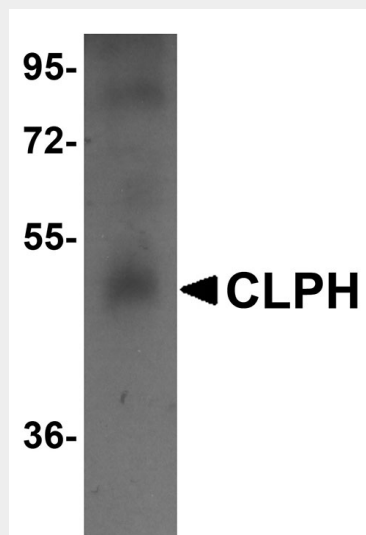
principal piece of the sperm flagellum (By similarity). {ECO:0000250|UniProtKB:Q68FX6, ECO:0000250|UniProtKB:Q8C633}

### CLPH Antibody - Protocols

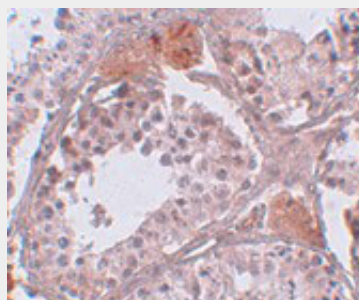
Provided below are standard protocols that you may find useful for product applications.

- [Western Blot](#)
- [Blocking Peptides](#)
- [Dot Blot](#)
- [Immunohistochemistry](#)
- [Immunofluorescence](#)
- [Immunoprecipitation](#)
- [Flow Cytometry](#)
- [Cell Culture](#)

### CLPH Antibody - Images



Western blot analysis of CLPH in human testis tissue lysate with CLPH antibody at 1 µg/mL.



Immunohistochemistry of CLPH in human testis tissue with CLPH antibody at 5 µg/mL.

### CLPH Antibody - Background

**CLPH Antibody:** CLPH (Casein-Like phosphoprotein) is a recently discovered, evolutionarily conserved, testis-specific cytoplasmic protein expressed exclusively in postmeiotic germ cells in rat spermatogenesis. CLPH is a novel casein kinase 2-phosphorylated disordered and calcium-binding protein that displays strong variation in relative expression levels during spermatogenesis. It is

frequently associated with the mitochondrial inner membrane during the last steps of spermatid differentiation and is involved in the extremely complex structural rearrangements occurring in haploid germ cells during spermiogenesis.

#### **CLPH Antibody - References**

Calvel P, Kervarrec C, Lavigne R, et al. CLPH, a novel casein kinase 2-phosphorylated disordered protein, is specifically associated with postmeiotic germ cells in rat spermatogenesis. J. Proteome Res. 2009; 8:2953-65.