

**MARVELD1 Antibody**  
**Catalog # ASC11022****Specification**

---

**MARVELD1 Antibody - Product Information**

Application	WB, E
Primary Accession	<a href="#">Q9BSK0</a>
Other Accession	<a href="#">EAW49903</a> , <a href="#">119570288</a>
Reactivity	Human, Mouse, Rat
Host	Rabbit
Clonality	Polyclonal
Isotype	IgG
Application Notes	MARVELD1 antibody can be used for detection of MARVELD1 by Western blot at 1 - 2 µg/mL.

**MARVELD1 Antibody - Additional Information**

Gene ID	83742
<b>Target/Specificity</b>	
MARVELD1;	

**Reconstitution & Storage**

MARVELD1 antibody can be stored at 4°C for three months and -20°C, stable for up to one year. As with all antibodies care should be taken to avoid repeated freeze thaw cycles. Antibodies should not be exposed to prolonged high temperatures.

**Precautions**

MARVELD1 Antibody is for research use only and not for use in diagnostic or therapeutic procedures.

**MARVELD1 Antibody - Protein Information**

**Name** MARVELD1

**Synonyms** MRVLDC1

**Function**

Microtubule-associated protein that exhibits cell cycle- dependent localization and can inhibit cell proliferation and migration.

**Cellular Location**

Cell membrane; Multi-pass membrane protein. Cytoplasm, cytoskeleton. Nucleus. Note=Observed in the nucleus and at the perinuclear region during interphase, but localizes at the mitotic spindle and midbody at metaphase. A significant fraction of MARVELD1 translocates to the plasma membrane during anaphase or upon microtubule depolymerization (By similarity).

**Tissue Location**

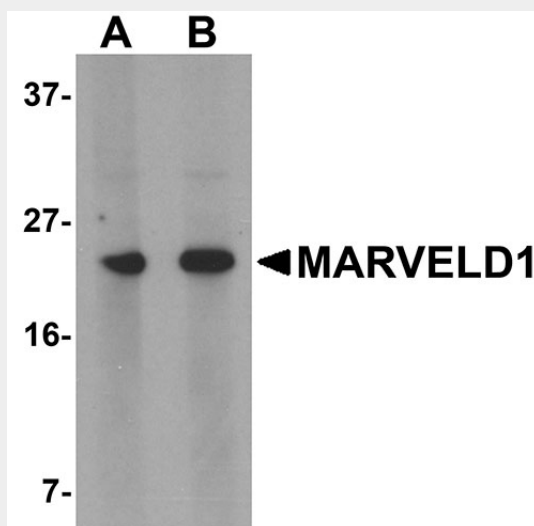
Widely expressed in normal tissues. Down-regulated in multiple primary tumors.

### MARVELD1 Antibody - Protocols

Provided below are standard protocols that you may find useful for product applications.

- [Western Blot](#)
- [Blocking Peptides](#)
- [Dot Blot](#)
- [Immunohistochemistry](#)
- [Immunofluorescence](#)
- [Immunoprecipitation](#)
- [Flow Cytometry](#)
- [Cell Culture](#)

### MARVELD1 Antibody - Images



Western blot analysis of MARVELD1 in mouse heart tissue lysate with MARVELD1 antibody at (A) 1 and (B) 2  $\mu$ g/mL.

### MARVELD1 Antibody - Background

**MARVELD1 Antibody:** MARVELD1, (MARVEL domain-containing 1), is one of the MARVEL (MAL and related proteins for vesicle trafficking and membrane link) domain-containing proteins. It is a nuclear-localized protein that is widely expressed in normal human tissues. While it has been reported to be overexpressed in colon cancer, MARVELD1 protein levels are generally lower in several primary tumors including ovary, breast, kidney, bladder and liver. This lower level of MARVELD1 expression in tumors is thought to be due to a higher methylation status of the MARVELD1 promoter as treatment of MDA-MB-361 with 5-aza-2'-deoxycytidine restores MARVELD1 expression, suggesting that loss of MARVELD1 expression may contribute to tumorigenicity.

### MARVELD1 Antibody - References

Wang S, Li Y, Han F, et al. On of MARVELD1, a novel nuclear protein that is down-regulated in multiple cancers and silenced by DNA methylation. *Cancer Lett.*2009; 282:77-86.  
Alves PM, Levy N, Stevenson BJ, et al. Identification of tumor-associated antigens by large scale analysis of genes expressed in human colorectal cancer. *Cancer Immun.*2008; 8:11.

Hatada I, Fukasawa M, and Kimura M. Genome-wide profiling of promoter methylation in human. *Oncogene* 2006; 25:3059-64.