

REEP2 Antibody
Catalog # ASC11050**Specification**

REEP2 Antibody - Product Information

Application	WB, IHC-P, IF, E
Primary Accession	Q9BRK0
Other Accession	EAW62139 , 119582543
Reactivity	Human, Mouse, Rat
Host	Rabbit
Clonality	Polyclonal
Isotype	IgG
Application Notes	REEP2 antibody can be used for detection of REEP2 by Western blot at 1 µg/mL. Antibody can also be used for immunohistochemistry starting at 5 µg/mL. For immunofluorescence start at 20 µg/mL.

REEP2 Antibody - Additional Information

Gene ID	51308
Target/Specificity	
REEP2;	

Reconstitution & Storage

REEP2 antibody can be stored at 4°C for three months and -20°C, stable for up to one year. As with all antibodies care should be taken to avoid repeated freeze thaw cycles. Antibodies should not be exposed to prolonged high temperatures.

Precautions

REEP2 Antibody is for research use only and not for use in diagnostic or therapeutic procedures.

REEP2 Antibody - Protein Information

Name REEP2

Synonyms C5orf19, SGC32445

Function

Required for endoplasmic reticulum (ER) network formation, shaping and remodeling. May enhance the cell surface expression of odorant receptors (By similarity).

Cellular Location

Membrane; Multi-pass membrane protein

Tissue Location

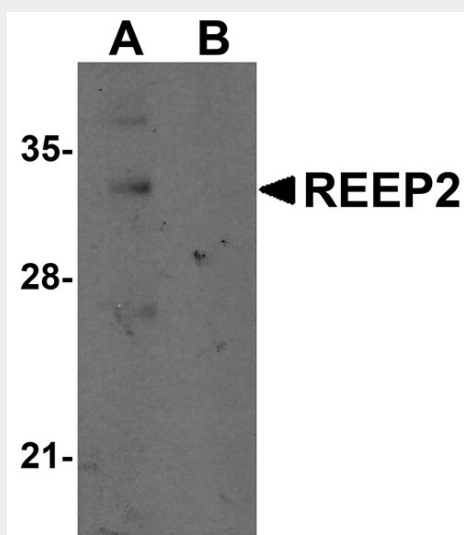
Detected in brain, heart and skeletal muscle, and at low levels in placenta, kidney and pancreas (PubMed:11161817) Expressed in circumvallate papillae (PubMed:16720576)

REEP2 Antibody - Protocols

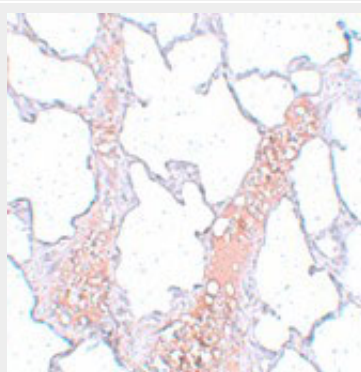
Provided below are standard protocols that you may find useful for product applications.

- [Western Blot](#)
- [Blocking Peptides](#)
- [Dot Blot](#)
- [Immunohistochemistry](#)
- [Immunofluorescence](#)
- [Immunoprecipitation](#)
- [Flow Cytometry](#)
- [Cell Culture](#)

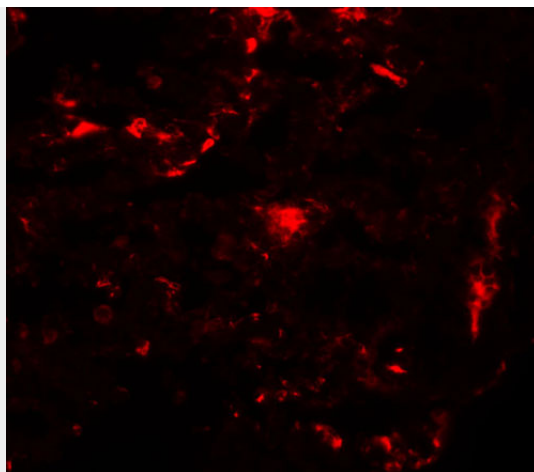
REEP2 Antibody - Images



Western blot analysis of REEP2 in mouse lung tissue lysate with REEP2 antibody at 1 μ g/mL in (A) the absence and (B) the presence of blocking peptide.



Immunohistochemistry of REEP2 in rat lung tissue with REEP2 antibody at 5 μ g/mL.



Immunofluorescence of REEP2 in rat lung tissue with REEP2 antibody at 20 µg/mL.

REEP2 Antibody - Background

REEP2 Antibody: Mammalian odorant receptors require accessory proteins such as RTP1 and RTP2 for functional cell surface expression. Receptor expression-enhancing protein (REEP) family members are transmembrane proteins which interact with odorant receptor proteins and may enhance the odorant receptor responses to odorants. Recently studies have shown other chemosensory receptors such as bitter taste receptors are also influenced by RTP and REEP family members.

REEP2 Antibody - References

Saito H, Kubota M, Roberts RW, et al. RTP family members induce functional expression of mammalian odorant receptors. *Cell*2004; 119:679-91.

Behrens M, Bartelt J, Reichling et al. Members of RTP and REEP gene families influence functional bitter taste receptor expression. *J. Biol. Chem.*2006; 281:20650-9.