

REEP3 Antibody
Catalog # ASC11051**Specification**

REEP3 Antibody - Product Information

Application	WB, IHC, IF
Primary Accession	Q6NUK4
Other Accession	NP_001001330 , 47679089
Reactivity	Human, Mouse, Rat
Host	Rabbit
Clonality	Polyclonal
Isotype	IgG
Application Notes	REEP3 antibody can be used for detection of REEP3 by Western blot at 1 µg/mL. Antibody can also be used for immunohistochemistry starting at 5 µg/mL. For immunofluorescence start at 20 µg/mL.

REEP3 Antibody - Additional Information

Gene ID	221035
Target/Specificity	
REEP3;	

Reconstitution & Storage

REEP3 antibody can be stored at 4°C for three months and -20°C, stable for up to one year. As with all antibodies care should be taken to avoid repeated freeze thaw cycles. Antibodies should not be exposed to prolonged high temperatures.

Precautions

REEP3 Antibody is for research use only and not for use in diagnostic or therapeutic procedures.

REEP3 Antibody - Protein Information

Name REEP3

Synonyms C10orf74

Function

Microtubule-binding protein required to ensure proper cell division and nuclear envelope reassembly by sequestering the endoplasmic reticulum away from chromosomes during mitosis. Probably acts by clearing the endoplasmic reticulum membrane from metaphase chromosomes.

Cellular Location

Endoplasmic reticulum membrane; Multi-pass membrane protein

Tissue Location

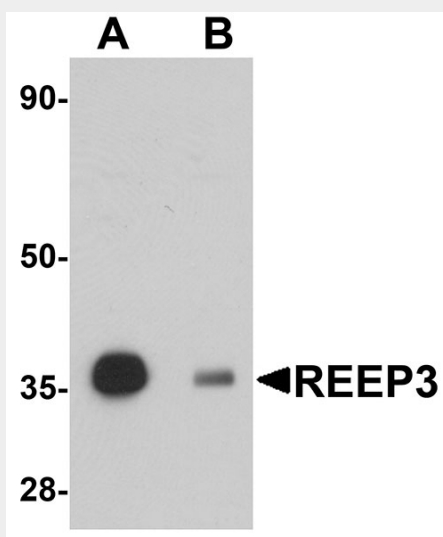
Expressed in circumvallate papillae.

REEP3 Antibody - Protocols

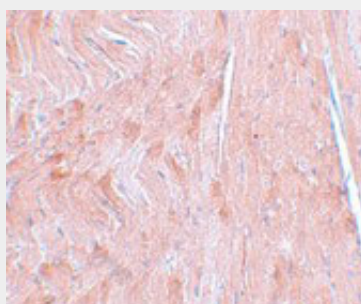
Provided below are standard protocols that you may find useful for product applications.

- [Western Blot](#)
- [Blocking Peptides](#)
- [Dot Blot](#)
- [Immunohistochemistry](#)
- [Immunofluorescence](#)
- [Immunoprecipitation](#)
- [Flow Cytometry](#)
- [Cell Culture](#)

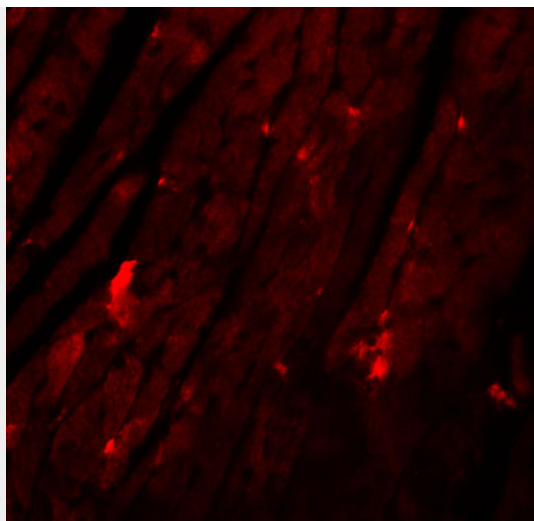
REEP3 Antibody - Images



Western blot analysis of REEP3 in rat heart tissue lysate with REEP3 antibody at 1 μ g/mL in (A) the absence and (B) the presence of blocking peptide.



Immunohistochemistry of REEP3 in mouse heart tissue with REEP3 antibody at 5 μ g/mL.



Immunofluorescence of REEP3 in mouse heart tissue with REEP3 antibody at 20 µg/mL.

REEP3 Antibody - Background

REEP3 Antibody: Mammalian odorant receptors require accessory proteins such as RTP1 and RTP2 for functional cell surface expression. Receptor expression-enhancing protein (REEP) family members are transmembrane proteins which interact with odorant receptor proteins and may enhance the odorant receptor responses to odorants. Recently studies have shown other chemosensory receptors such as bitter taste receptors are also influenced by RTP and REEP family members. REEP3 has also been suggested as a novel candidate gene for autism and as a loci influencing the plasma levels of the liver enzyme alkaline phosphatase.

REEP3 Antibody - References

- Saito H, Kubota M, Roberts RW, et al. RTP family members induce functional expression of mammalian odorant receptors. *Cell* 2004; 119:679-91.
- Behrens M, Bartelt J, Reichling et al. Members of RTP and REEP gene families influence functional bitter taste receptor expression. *J. Biol. Chem.* 2006; 281:20650-9.
- Castermans D, Vermeesch JR, Fryns J-P, et al. Identification and characterization of the TRIP8 and REEP3 genes on chromosome 10q21.3 as novel candidate genes for autism. *Euro. J. Hum. Genet.* 2007; 15:422-31.
- Yuan X, Waterworth D, Perry JR, et al. Population-based genome-wide association studies reveal six loci influencing plasma levels of liver enzymes. *Am. J. Hum. Genet.* 2008; 83:520-8.