

RSRC1 Antibody
Catalog # ASC11068**Specification**

RSRC1 Antibody - Product Information

Application	WB, IHC-P, IF, E
Primary Accession	Q96IZ7
Other Accession	NP_057709 , 38488727
Reactivity	Human, Mouse, Rat
Host	Rabbit
Clonality	Polyclonal
Isotype	IgG
Application Notes	RSRC1 antibody can be used for detection of RSRC1 by Western blot at 1 - 2 µg/mL. Antibody can also be used for immunohistochemistry starting at 5 µg/mL. For immunofluorescence start at 20 µg/mL.

RSRC1 Antibody - Additional Information

Gene ID	51319
Target/Specificity	
RSRC1;	

Reconstitution & Storage

RSRC1 antibody can be stored at 4°C for three months and -20°C, stable for up to one year. As with all antibodies care should be taken to avoid repeated freeze thaw cycles. Antibodies should not be exposed to prolonged high temperatures.

Precautions

RSRC1 Antibody is for research use only and not for use in diagnostic or therapeutic procedures.

RSRC1 Antibody - Protein Information

Name RSRC1

Synonyms SRRP53

Function

Has a role in alternative splicing and transcription regulation (PubMed:29522154). Involved in both constitutive and alternative pre-mRNA splicing. May have a role in the recognition of the 3' splice site during the second step of splicing.

Cellular Location

Nucleus. Nucleus speckle. Cytoplasm. Note=Shuttles between the nucleus and cytoplasm.

Tissue Location

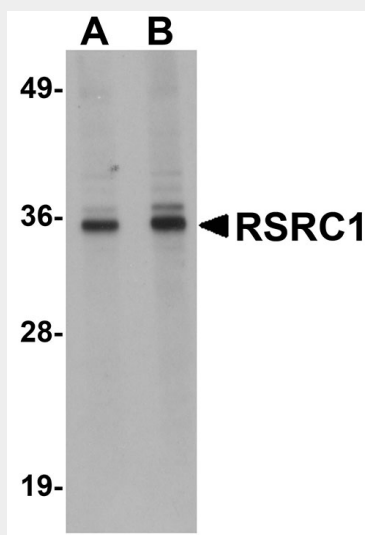
Widely expressed. Expressed in brain, spinal cord, cerebellum.

RSRC1 Antibody - Protocols

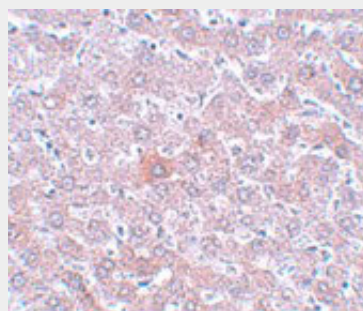
Provided below are standard protocols that you may find useful for product applications.

- [Western Blot](#)
- [Blocking Peptides](#)
- [Dot Blot](#)
- [Immunohistochemistry](#)
- [Immunofluorescence](#)
- [Immunoprecipitation](#)
- [Flow Cytometry](#)
- [Cell Culture](#)

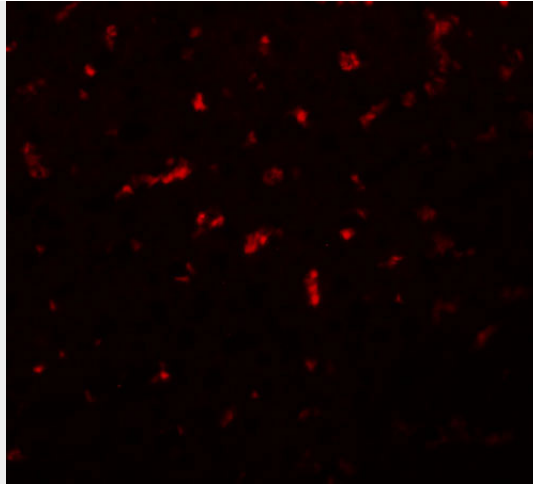
RSRC1 Antibody - Images



Western blot analysis of RSRC1 in HepG2 cell lysate with RSRC1 antibody at (A) 1 and (B) 2 µg/mL.



Immunohistochemistry of RSRC1 in rat liver tissue with RSRC1 antibody at 5 µg/mL.



Immunofluorescence of RSRC1 in rat liver tissue with RSRC1 antibody at 20 µg/mL.

RSRC1 Antibody - Background

RSRC1 Antibody: The arginine/serine-rich coiled-coil 1 protein (RSRC1) was initially identified as a non-snRNP splicing factor that has a role in both the constitutive and alternative splicing of pre-mRNA molecules. In cellular nuclear extracts immunodepleted of RSRC1, the second step of pre-mRNA splicing is blocked; recombinant RSRC1 is able to restore splicing activity. RSRC1 has also been reported to be associated with schizophrenia as well as a unique marker of bone marrow-derived stem cells that also express the cdc34 marker.

RSRC1 Antibody - References

Cazalla D, Newton K, and Caceres JF. A novel SR-related protein is required for the second step of pre-mRNA splicing. *Mol. Cell. Biol.* 2005; 25:2969-80.
Potkin SG, Turner JA, Fallon JA, et al. Gene discovery through imaging genetics: identification of two novel genes associated with schizophrenia. *Mol. Psych.* 2009; 14:416-28.
Zhang QH, Ye M, Wu XY, et al. Cloning and functional analysis of cDNAs with open reading frames for 300 previously unidentified genes expressed in CD34+ hematopoietic stem/progenitor cells. *Genome Res.* 2008; 18:640-3.