

**Slc37A2 Antibody**  
**Catalog # ASC11086****Specification**

---

**Slc37A2 Antibody - Product Information**

Application	WB, IHC, IF
Primary Accession	<a href="#">Q8TED4</a>
Other Accession	<a href="#">NP_938018</a> , <a href="#">38093649</a>
Reactivity	Human, Mouse, Rat
Host	Rabbit
Clonality	Polyclonal
Isotype	IgG
Application Notes	Slc37A2 antibody can be used for detection of Slc37A2 by Western blot at 1 µg/mL. Antibody can also be used for immunohistochemistry starting at 5 µg/mL. For immunofluorescence start at 20 µg/mL.

**Slc37A2 Antibody - Additional Information**

Gene ID	219855
Target/Specificity	
SLC37A2;	

**Reconstitution & Storage**

Slc37A2 antibody can be stored at 4°C for three months and -20°C, stable for up to one year. As with all antibodies care should be taken to avoid repeated freeze thaw cycles. Antibodies should not be exposed to prolonged high temperatures.

**Precautions**

Slc37A2 Antibody is for research use only and not for use in diagnostic or therapeutic procedures.

**Slc37A2 Antibody - Protein Information**

**Name** SLC37A2 ([HGNC:20644](#))

**Function**

Inorganic phosphate and glucose-6-phosphate antiporter. May transport cytoplasmic glucose-6-phosphate into the lumen of the endoplasmic reticulum and translocate inorganic phosphate into the opposite direction. Independent of a luminal glucose-6-phosphatase. May not play a role in homeostatic regulation of blood glucose levels.

**Cellular Location**

Endoplasmic reticulum membrane; Multi-pass membrane protein

**Tissue Location**

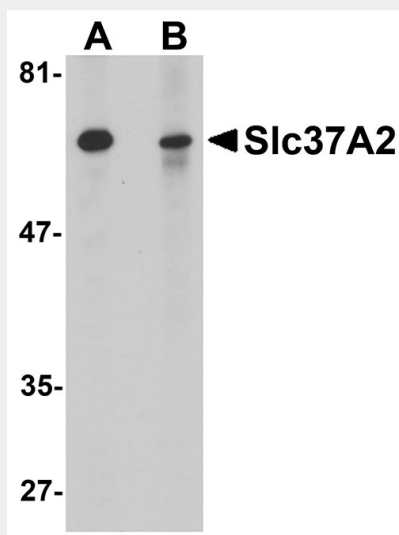
Detected in intestine and pancreas. Lower expression is also detected in liver and kidney

## Slc37A2 Antibody - Protocols

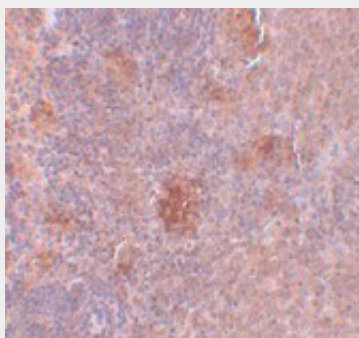
Provided below are standard protocols that you may find useful for product applications.

- [Western Blot](#)
- [Blocking Peptides](#)
- [Dot Blot](#)
- [Immunohistochemistry](#)
- [Immunofluorescence](#)
- [Immunoprecipitation](#)
- [Flow Cytometry](#)
- [Cell Culture](#)

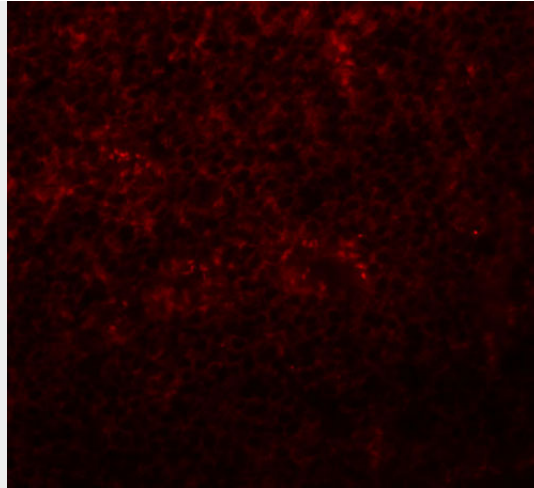
## Slc37A2 Antibody - Images



Western blot analysis of Slc37A2 in mouse spleen tissue lysate with Slc37A2 antibody at 1  $\mu$ g/mL in the (A) absence and (B) presence of blocking peptide.



Immunohistochemistry of Slc37A2 in rat spleen tissue with Slc37A2 antibody at 5  $\mu$ g/mL.



Immunofluorescence of Slc37A2 in rat spleen tissue with Slc37A2 antibody at 20 µg/mL.

### **Slc37A2 Antibody - Background**

**Slc37A2 Antibody:** The Slc37 gene family consists of four members which have 10-12 predicted transmembrane domains and belong to the sugar-phosphate transporter superfamily. Recent experiments have demonstrated that Slc37A2 is a macrophage-specific gene selectively expressed in obese white adipose tissue. Its transcript is also expressed in spleen and thymus and the cell lines RAW264.7 and THP-1. Compared to wild-type mice, Slc37A2 mRNA is expressed at nine-fold higher levels in abdominal epididymal fat deposits of ob/ob mice, suggesting that it may be required to limit the contribution of macrophages to the inflammatory state present in obesity. Slc37A2 protein is post-translationally modified with the addition of N-linked glycans and migrates as a heterogeneous species of 50-75kDa.

### **Slc37A2 Antibody - References**

Bartolini L and Antonarakis SE. The human sugar-phosphate/phosphate exchanger family SLC37. *Eur. J. Physiol.* 2004; 447-780-3.  
Kim JY, Tillison K, Zhou S, et al. The major facilitator superfamily member Slc37a2 is a novel macrophage-specific gene selectively expressed in obese white adipose tissue. *Am. J. Physiol. Endocrinol. Metab.* 2007; 293:E110-20.