

CCDC69 Antibody
Catalog # ASC11106**Specification**

CCDC69 Antibody - Product Information

Application	WB, IHC, IF
Primary Accession	A6N179
Other Accession	NP_056436 , 45935391
Reactivity	Human, Mouse, Rat
Host	Chicken
Clonality	Polyclonal
Isotype	IgY
Application Notes	CCDC69 antibody can be used for detection of CCDC69 by Western blot at 1 µg/mL. Antibody can also be used for immunohistochemistry starting at 5 µg/mL. For immunofluorescence start at 20 µg/mL.

CCDC69 Antibody - Additional Information

Gene ID	26112
Target/Specificity	
CCDC69;	

Reconstitution & Storage

CCDC69 antibody can be stored at 4°C for three months and -20°C, stable for up to one year. As with all antibodies care should be taken to avoid repeated freeze thaw cycles. Antibodies should not be exposed to prolonged high temperatures.

Precautions

CCDC69 Antibody is for research use only and not for use in diagnostic or therapeutic procedures.

CCDC69 Antibody - Protein Information

Name CCDC69 ([HGNC:24487](#))

Function

May act as a scaffold to regulate the recruitment and assembly of spindle midzone components. Required for the localization of AURKB and PLK1 to the spindle midzone.

Cellular Location

Cytoplasm, cytoskeleton, spindle. Midbody Note=During early anaphase, localizes along overlapping interpolar microtubules between the separating chromosomes. During late anaphase, localizes to the center of spindle midzone. Concentrated at the midbody during telophase.

Tissue Location

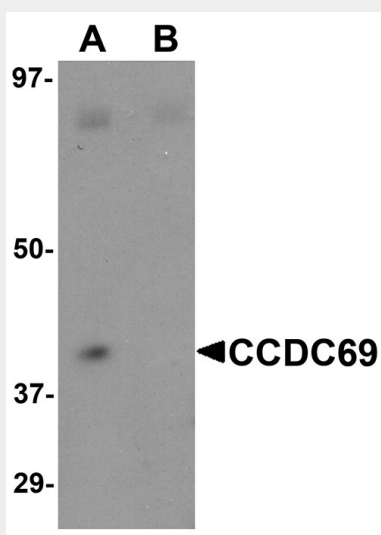
Highly expressed in duodenum, esophagus, pancreas, prostate, salivary gland, thymus and urinary bladder

CCDC69 Antibody - Protocols

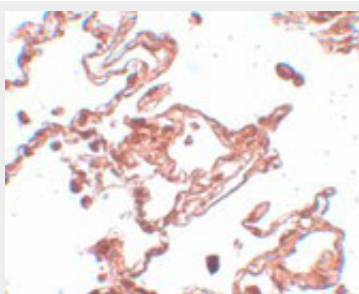
Provided below are standard protocols that you may find useful for product applications.

- [Western Blot](#)
- [Blocking Peptides](#)
- [Dot Blot](#)
- [Immunohistochemistry](#)
- [Immunofluorescence](#)
- [Immunoprecipitation](#)
- [Flow Cytometry](#)
- [Cell Culture](#)

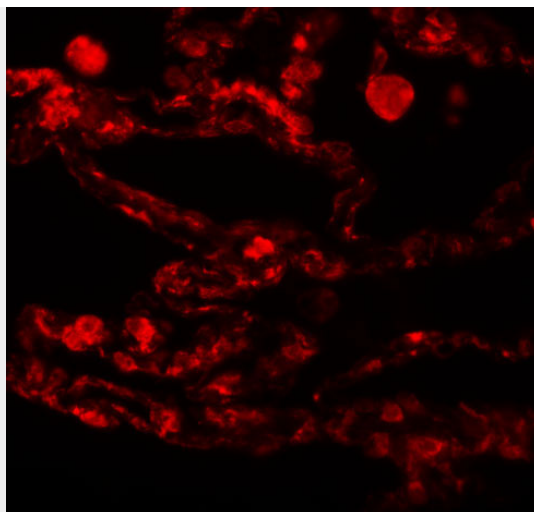
CCDC69 Antibody - Images



Western blot analysis of CCDC69 in mouse lung tissue lysate with CCDC69 antibody at 1 μ g/mL in (A) the absence and (B) the presence of blocking peptide.



Immunohistochemistry of CCDC69 in human lung tissue with CCDC69 antibody at 5 μ g/mL.



Immunofluorescence of CCDC69 in human lung tissue with CCDC69 antibody at 20 μ g/mL.

CCDC69 Antibody - Background

CCDC69 Antibody: The coiled-coil domain is a common protein motif that is often involved in protein oligomerization and is found in proteins such as transcription factors and intermediate filaments. The CCDC47 gene maps to chromosome 5 at 5q33.1. Little is known about this protein.

CCDC69 Antibody - References

Steinmetz MO, Jelesarov I, Matousek WM, et al. Molecular basis of coiled-coil formation. Proc. Natl. Acad. Sci. USA 2007; 104:7062-7.