

TINP1 Antibody
Catalog # ASC11111**Specification**

TINP1 Antibody - Product Information

Application	WB, IHC-P, E
Primary Accession	O95478
Other Accession	NP_055701 , 7662677
Reactivity	Human, Mouse, Rat
Host	Chicken
Clonality	Polyclonal
Isotype	IgY
Application Notes	TINP1 antibody can be used for detection of TINP1 by Western blot at 1 - 2 µg/mL. Antibody can also be used for immunohistochemistry starting at 5 µg/mL.

TINP1 Antibody - Additional Information

Gene ID	10412
Target/Specificity	
NSA2;	

Reconstitution & Storage

TINP1 antibody can be stored at 4°C for three months and -20°C, stable for up to one year. As with all antibodies care should be taken to avoid repeated freeze thaw cycles. Antibodies should not be exposed to prolonged high temperatures.

Precautions

TINP1 Antibody is for research use only and not for use in diagnostic or therapeutic procedures.

TINP1 Antibody - Protein Information

Name NSA2

Synonyms TINP1

Function

Involved in the biogenesis of the 60S ribosomal subunit. May play a part in the quality control of pre-60S particles (By similarity).

Cellular Location

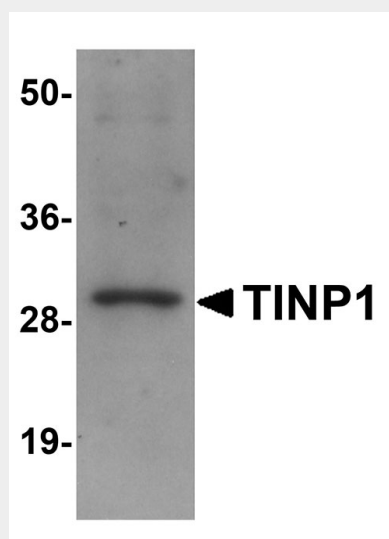
Nucleus, nucleolus.

TINP1 Antibody - Protocols

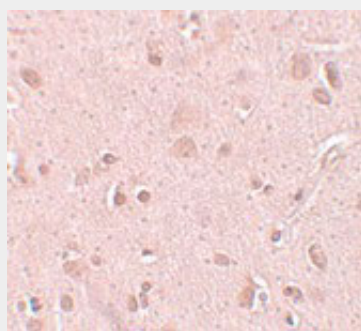
Provided below are standard protocols that you may find useful for product applications.

- [Western Blot](#)
- [Blocking Peptides](#)
- [Dot Blot](#)
- [Immunohistochemistry](#)
- [Immunofluorescence](#)
- [Immunoprecipitation](#)
- [Flow Cytometry](#)
- [Cell Culture](#)

TINP1 Antibody - Images



Western blot analysis of TINP1 in rat brain tissue lysate with TINP1 antibody at (A) 1 and (B) 2 $\mu\text{g/mL}$.



Immunohistochemistry of TINP1 in human brain tissue with TINP1 antibody at 5 $\mu\text{g/mL}$.

TINP1 Antibody - Background

TINP1 Antibody: TINP1 (TGF-beta inducible nuclear protein 1), also known as NSA2 (Nop seven-associated 2), is a highly conserved nucleolar protein essential for large ribosomal subunit biogenesis. NSA2 is broadly expressed in human tissues and cultured cell lines, and located in the nucleolus of the cell. It is thought to be involved in cell proliferation and cell cycle regulation.

TINP1 Antibody - References

Lebreton A, Saveanu C, Decourty L, et al. Nsa2 is an unstable, conserved factor required for the

maturation of 27 SB pre-rRNAs. J. Biol. Chem.2006; 281:27099-108.

Zhang H, Ma X, Shi T, et al. NSA2, a novel nucleolus protein regulates cell proliferation and cell cycle. Biochem. Biophys. Res. Commun.2010; 391:651-8.