

APC1 Antibody
Catalog # ASC11113**Specification****APC1 Antibody - Product Information**

Application	WB, IHC-P, E
Primary Accession	Q9H1A4
Other Accession	Q9H1A4 , 37537845
Reactivity	Human, Mouse
Host	Rabbit
Clonality	Polyclonal
Isotype	IgG
Application Notes	APC1 antibody can be used for detection of APC1 by Western blot at 1 - 2 µg/mL. Antibody can also be used for immunohistochemistry starting at 5 µg/mL.

APC1 Antibody - Additional Information

Gene ID	64682
Target/Specificity	
ANAPC1;	

Reconstitution & Storage

APC1 antibody can be stored at 4°C for three months and -20°C, stable for up to one year. As with all antibodies care should be taken to avoid repeated freeze thaw cycles. Antibodies should not be exposed to prolonged high temperatures.

Precautions

APC1 Antibody is for research use only and not for use in diagnostic or therapeutic procedures.

APC1 Antibody - Protein Information

Name ANAPC1

Synonyms TSG24

Function

Component of the anaphase promoting complex/cyclosome (APC/C), a cell cycle-regulated E3 ubiquitin ligase that controls progression through mitosis and the G1 phase of the cell cycle (PubMed:18485873). The APC/C complex acts by mediating ubiquitination and subsequent degradation of target proteins: it mainly mediates the formation of 'Lys-11'-linked polyubiquitin chains and, to a lower extent, the formation of 'Lys-48'- and 'Lys-63'-linked polyubiquitin chains (PubMed:18485873). The APC/C complex catalyzes assembly of branched 'Lys-11'-/'Lys-48'-linked branched ubiquitin chains on target proteins (PubMed:29033132).

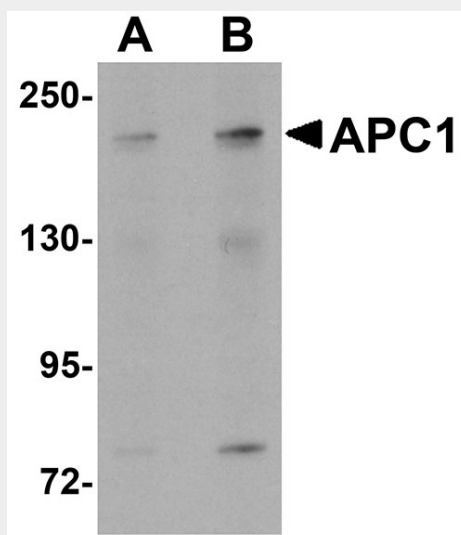
target="_blank">29033132).

APC1 Antibody - Protocols

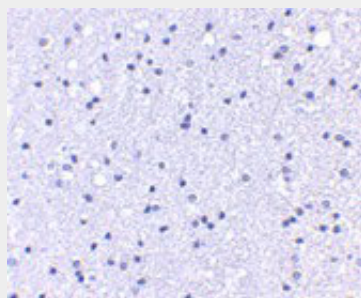
Provided below are standard protocols that you may find useful for product applications.

- [Western Blot](#)
- [Blocking Peptides](#)
- [Dot Blot](#)
- [Immunohistochemistry](#)
- [Immunofluorescence](#)
- [Immunoprecipitation](#)
- [Flow Cytometry](#)
- [Cell Culture](#)

APC1 Antibody - Images



Western blot analysis of APC1 in SK-N-SH cell lysate with APC1 antibody at (A) 1 and (B) 2 µg/mL.



Immunohistochemistry of APC1 in human brain tissue with APC1 antibody at 5 µg/mL.

APC1 Antibody - Background

APC1 Antibody: Cell cycle regulated protein ubiquitination and degradation within subcellular domains is thought to be essential for the normal progression of mitosis. APC1, also known as mitotic checkpoint regulator (MCPR), is a highly conserved component of the anaphase promoting complex/cyclosome (APC/C), a cell cycle-regulated E3 ubiquitin ligase that controls progression through mitosis and the G1 phase of the cell cycle. APC/C is responsible for degrading anaphase

inhibitors, mitotic cyclins, and spindle-associated proteins ensuring that events of mitosis take place in proper sequence. The individual APC/C components mRNA and protein levels are expressed at approximately the same levels in most tissues and cell lines, suggesting that they perform their functions as part of a complex.

APC1 Antibody - References

JM Peters. The anaphase promoting complex/cyclosome: a machine designed to destroy. Nat. Rev. Mol. Cell Biol.2006; 7:644-56.

Jorgensen PM, Graslund S, Betz R, et al. Characterisation of the human APC1, the largest subunit of the anaphase-promoting complex. Gene2001; 262:51-9.