

APC10 Antibody
Catalog # ASC11121**Specification****APC10 Antibody - Product Information**

Application	WB, IHC-P, IF, E
Primary Accession	Q9UM13
Other Accession	EAX05052 , 119625457
Reactivity	Human, Mouse, Rat
Host	Rabbit
Clonality	Polyclonal
Isotype	IgG
Application Notes	APC10 antibody can be used for detection of APC10 by Western blot at 1 - 2 µg/mL. Antibody can also be used for immunohistochemistry starting at 5 µg/mL. For immunofluorescence start at 20 µg/mL.

APC10 Antibody - Additional Information

Gene ID	10393
Target/Specificity	
ANAPC10;	

Reconstitution & Storage

APC10 antibody can be stored at 4°C for three months and -20°C, stable for up to one year. As with all antibodies care should be taken to avoid repeated freeze thaw cycles. Antibodies should not be exposed to prolonged high temperatures.

Precautions

APC10 Antibody is for research use only and not for use in diagnostic or therapeutic procedures.

APC10 Antibody - Protein Information

Name ANAPC10

Synonyms APC10

Function

Component of the anaphase promoting complex/cyclosome (APC/C), a cell cycle-regulated E3 ubiquitin ligase that controls progression through mitosis and the G1 phase of the cell cycle (PubMed:18485873). The APC/C complex acts by mediating ubiquitination and subsequent degradation of target proteins: it mainly mediates the formation of 'Lys-11'-linked polyubiquitin chains and, to a lower extent, the formation of 'Lys-48'- and 'Lys-63'-linked polyubiquitin chains (PubMed:18485873). The APC/C complex catalyzes assembly of branched 'Lys-11'-/'Lys-48'-linked branched ubiquitin chains on target proteins (PubMed:29033132).

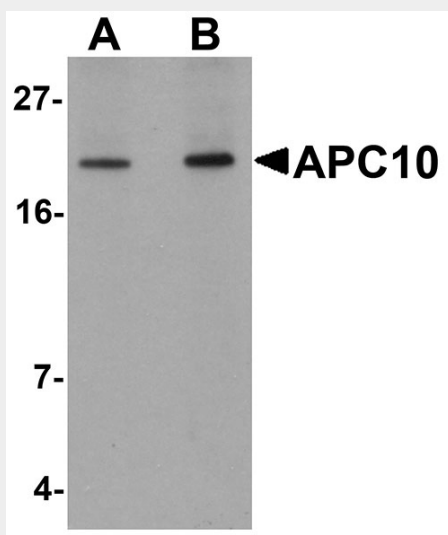
target="_blank">29033132).

APC10 Antibody - Protocols

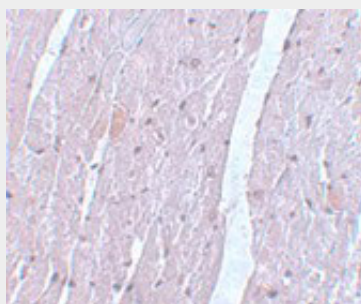
Provided below are standard protocols that you may find useful for product applications.

- [Western Blot](#)
- [Blocking Peptides](#)
- [Dot Blot](#)
- [Immunohistochemistry](#)
- [Immunofluorescence](#)
- [Immunoprecipitation](#)
- [Flow Cytometry](#)
- [Cell Culture](#)

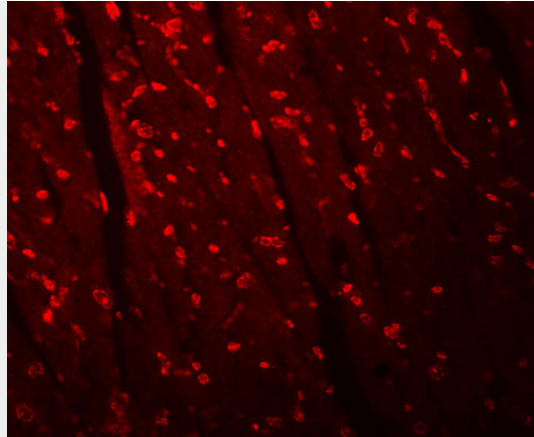
APC10 Antibody - Images



Western blot analysis of APC10 in mouse heart tissue lysate with APC10 antibody at (A) 1 and (B) 2 μ g/mL.



Immunohistochemistry of APC10 in mouse heart tissue with APC10 antibody at 5 μ g/mL.



Immunofluorescence of APC10 in mouse heart tissue with APC10 antibody at 20 µg/mL.

APC10 Antibody - Background

APC10 Antibody: Cell cycle regulated protein ubiquitination and degradation within subcellular domains is thought to be essential for the normal progression of mitosis. APC10 is a highly conserved component of the anaphase promoting complex/cyclosome (APC/C), a cell cycle-regulated E3 ubiquitin ligase that controls progression through mitosis and the G1 phase of the cell cycle. APC/C is responsible for degrading anaphase inhibitors, mitotic cyclins, and spindle-associated proteins ensuring that events of mitosis take place in proper sequence. The individual APC/C components mRNA and protein levels are expressed at approximately the same levels in most tissues and cell lines, suggesting that they perform their functions as part of a complex. It has been suggested that APC10 plays a role to regulate the binding of specific substrates to the APC/C complex, similar to that of coactivators.

APC10 Antibody - References

JM Peters. The anaphase promoting complex/cyclosome: a machine designed to destroy. *Nat. Rev. Mol. Cell Biol.*2006; 7:644-56.
Jorgensen PM, Graslund S, Betz R, et al. Characterisation of the human APC1, the largest subunit of the anaphase-promoting complex. *Gene*2001; 262:51-9.
Passmore LA, McCormack EA, Au SWN, et al. Doc1 mediates the activity of the anaphase-promoting complex by contributing to substrate recognition. *EMBO J.*2003; 22:786-96.