

**SCUBE1 Antibody**  
**Catalog # ASC11165****Specification**

---

**SCUBE1 Antibody - Product Information**

Application	WB, ICC, IF
Primary Accession	<a href="#">Q8IWY4</a>
Other Accession	<a href="#">NP_766638</a> , <a href="#">120587029</a>
Reactivity	Human
Host	Rabbit
Clonality	Polyclonal
Isotype	IgG
Application Notes	SCUBE1 antibody can be used for detection of SCUBE1 by Western blot at 1 µg/mL. Antibody can also be used for immunocytochemistry starting at 20 µg/mL. For immunofluorescence start at 20 µg/mL.

**SCUBE1 Antibody - Additional Information**

Gene ID	80274
<b>Target/Specificity</b>	
SCUBE1;	

**Reconstitution & Storage**

SCUBE1 antibody can be stored at 4°C for three months and -20°C, stable for up to one year. As with all antibodies care should be taken to avoid repeated freeze thaw cycles. Antibodies should not be exposed to prolonged high temperatures.

**Precautions**

SCUBE1 Antibody is for research use only and not for use in diagnostic or therapeutic procedures.

**SCUBE1 Antibody - Protein Information**

**Name** SCUBE1

**Function**

Could function as an adhesive molecule and its matrix bound and soluble fragments may play a critical role in vascular biology.

**Cellular Location**

Secreted. Cell membrane; Peripheral membrane protein

**Tissue Location**

Detected in endothelial cells. Highly expressed in platelets. Stored in platelet alpha granules, and transferred to the cell surface upon activation and aggregation. A smaller form, probably produced by limited proteolysis, after being released from the storage granules, is associated with thrombus

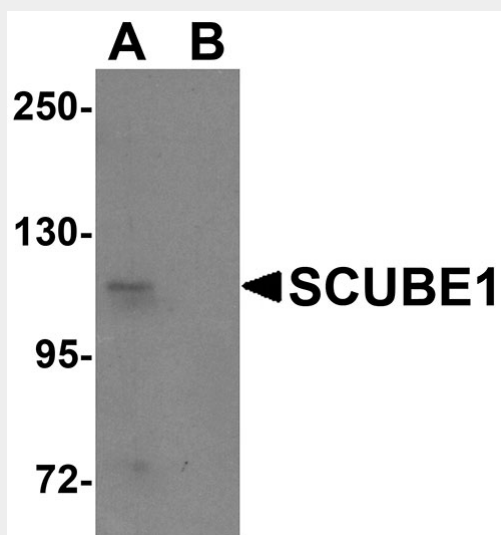
and localized with the subendothelial matrices in atherosclerotic plaques

### SCUBE1 Antibody - Protocols

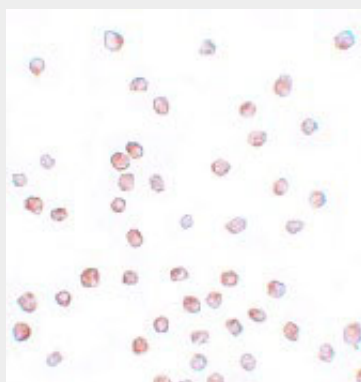
Provided below are standard protocols that you may find useful for product applications.

- [Western Blot](#)
- [Blocking Peptides](#)
- [Dot Blot](#)
- [Immunohistochemistry](#)
- [Immunofluorescence](#)
- [Immunoprecipitation](#)
- [Flow Cytometry](#)
- [Cell Culture](#)

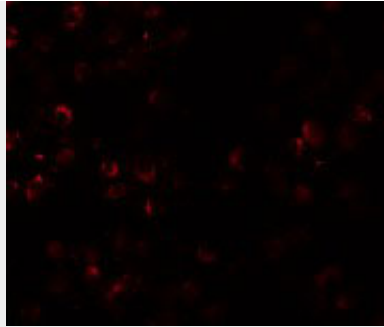
### SCUBE1 Antibody - Images



Western blot analysis of SCUBE1 in Daudi cell lysate with SCUBE1 antibody at 1  $\mu$ g/mL in (A) the absence and (B) the presence of blocking peptide.



Immunocytochemistry of SCUBE1 in Daudi cells with SCUBE1 antibody at 20  $\mu$ g/mL.



Immunofluorescence of SCUBE1 in Daudi cells with SCUBE1 antibody at 20 µg/mL.

### **SCUBE1 Antibody - Background**

**SCUBE1 Antibody:** SCUBE1 is an EGF-related protein with a CUB (C1s-like) domain that is expressed primarily in the developing gonad, nervous system, somites, surface ectoderm and limb buds. The N-terminal EGF-like repeats of SCUBE1 participate in the formation of adhesions in a Ca<sup>2+</sup>-dependent fashion. In contrast, the C-terminal cysteine-rich motifs and CUB domain can directly bind and antagonize bone morphogenic protein activity; genetic ablation of this region resulted in brain malformation in mice embryos, suggesting SCUBE1 plays a role in brain morphogenesis. SCUBE1 has also been implicated in early craniofacial development in mice.

### **SCUBE1 Antibody - References**

Grimmond S, Larder R, Van Hateren N, et al. Cloning, mapping, and expression analysis of a gene encoding a novel mammalian EGF-related protein (SCUBE1). *Genomics* 2000; 70:74-81.  
Tu C, Yan Y, Wu S, et al. Domain and function analysis of a novel platelet-endothelial cell surface protein, SCUBE1. *J. Biol. Chem.* 2008; 283:12478-88.  
Xaiver GM, Sharpe PT, and Colbourne MT. Scube1 is expressed during facial development in the mouse. *J. Exp. Zool. B. Mol. Dev. Evol.* 2009; 312B:518-24.