

SCUBE2 Antibody
Catalog # ASC11166**Specification**

SCUBE2 Antibody - Product Information

Application	WB, ICC, IF
Primary Accession	O9NQ36
Other Accession	NP_066025 , 283046663
Reactivity	Human, Rat
Host	Rabbit
Clonality	Polyclonal
Isotype	IgG
Application Notes	SCUBE2 antibody can be used for detection of SCUBE2 by Western blot at 1 µg/mL. Antibody can also be used for immunocytochemistry starting at 20 µg/mL. For immunofluorescence start at 20 µg/mL.

SCUBE2 Antibody - Additional Information

Gene ID	57758
Target/Specificity	
SCUBE2;	

Reconstitution & Storage

SCUBE2 antibody can be stored at 4°C for three months and -20°C, stable for up to one year. As with all antibodies care should be taken to avoid repeated freeze thaw cycles. Antibodies should not be exposed to prolonged high temperatures.

Precautions

SCUBE2 Antibody is for research use only and not for use in diagnostic or therapeutic procedures.

SCUBE2 Antibody - Protein Information

Name SCUBE2 ([HGNC:30425](#))

Synonyms CEGP1

Function

Lipid-binding protein required for SHH long-range signaling by binding to the dually lipid-modified SHH (ShhNp) and by promoting ShhNp mobilization, solubilization and release from the cell membrane (PubMed:22902404, PubMed:22677548). Acts by enhancing the proteolytic processing (shedding) of the lipid-modified N- and C- terminal of ShhNp at the cell surface (PubMed:24522195). Synergizes with DISP1 to increase SHH secretion (PubMed:24522195).

<http://www.uniprot.org/citations/22902404>). Probable cell surface coreceptor for VEGFR2 involved in VEGFR2-mediated angiogenesis (PubMed:<<http://www.uniprot.org/citations/27834687>>).

Cellular Location

Secreted. Cell surface. Note=Secreted and tethered at the cell surface (PubMed:19480626).

Tissue Location

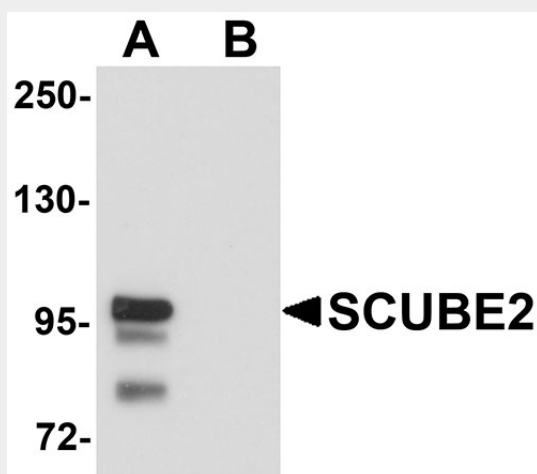
Expressed in a broad spectrum of adult tissues (PubMed:12270931).

SCUBE2 Antibody - Protocols

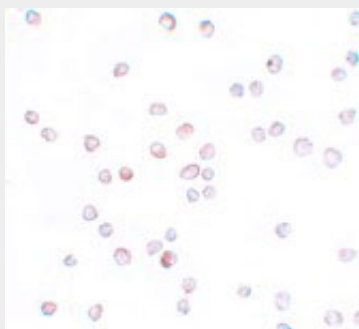
Provided below are standard protocols that you may find useful for product applications.

- [Western Blot](#)
- [Blocking Peptides](#)
- [Dot Blot](#)
- [Immunohistochemistry](#)
- [Immunofluorescence](#)
- [Immunoprecipitation](#)
- [Flow Cytometry](#)
- [Cell Culture](#)

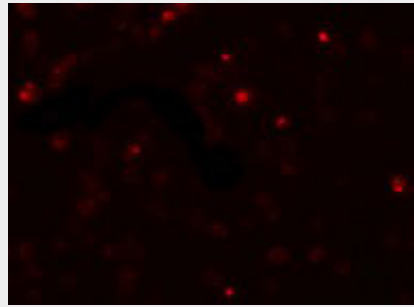
SCUBE2 Antibody - Images



Western blot analysis of SCUBE2 in Daudi cell lysate with SCUBE2 antibody at 1 µg/mL in (A) the absence and (B) the presence of blocking peptide.



Immunocytochemistry of SCUBE2 in Daudi cells with SCUBE2 antibody at 20 µg/mL.



Immunofluorescence of SCUBE2 in Daudi cells with SCUBE2 antibody at 20 µg/mL.

SCUBE2 Antibody - Background

SCUBE2 Antibody: SCUBE2 is a member of a family of secreted glycoproteins that contain N-terminal EGF-like repeats and C-terminal cysteine-rich motifs and CUB domain and are expressed in embryonic neuroectoderm and vascular epithelium. SCUBE2 is a close homolog to SCUBE1 and can form a heterodimeric complex with SCUBE1. SCUBE2 is thought to participate in the Hedgehog signaling pathway by specifically interacting with Sonic Hedgehog (SHH) and the receptor PTCH1, enhancing the SHH signaling activity in the raft microdomains of the plasma membrane, and may thus play important roles in organ development and tumor progression.

SCUBE2 Antibody - References

Grimmond S, Larder R, Van Hateren N, et al. Cloning, mapping, and expression analysis of a gene encoding a novel mammalian EGF-related protein (SCUBE1). *Genomics* 2000; 70:74-81.
Yang RB, Ng CK, Wasserman SM, et al. Identification of a novel family of cell-surface proteins expressed in human vascular endothelium. *J. Biol. Chem.* 2002; 277:46364-73.
Grimmond S, Larder R, Van Hateren N, et al. Cloning, mapping, and expression analysis of a gene encoding a novel mammalian EGF-related protein (SCUBE1). *Genomics* 2000; 70:74-81.
Tsai M, Cheng C, Lin Y, et al. Isolation and characterization of a secreted, cell-surface glycoprotein SCUBE2 from humans. *Biochem. J.* 2009; 422:119-28.