

SH3RF2 Antibody
Catalog # ASC11186**Specification****SH3RF2 Antibody - Product Information**

Application	WB, IHC-P, IF, E
Primary Accession	Q8TEC5
Other Accession	NP_689763 , 222446607
Reactivity	Human, Mouse, Rat
Host	Rabbit
Clonality	Polyclonal
Isotype	IgG
Application Notes	SH3RF2 antibody can be used for detection of SH3RF2 by Western blot at 1 - 2 µg/mL. Antibody can also be used for immunohistochemistry starting at 10 µg/mL. For immunofluorescence start at 20 µg/mL.

SH3RF2 Antibody - Additional Information

Gene ID	153769
Target/Specificity	
SH3RF2;	

Reconstitution & Storage

SH3RF2 antibody can be stored at 4°C for three months and -20°C, stable for up to one year. As with all antibodies care should be taken to avoid repeated freeze thaw cycles. Antibodies should not be exposed to prolonged high temperatures.

Precautions

SH3RF2 Antibody is for research use only and not for use in diagnostic or therapeutic procedures.

SH3RF2 Antibody - Protein Information**Name** SH3RF2**Function**

Has E3 ubiquitin-protein ligase activity (PubMed:24130170). Acts as an anti-apoptotic regulator of the JNK pathway by ubiquitinating and promoting the degradation of SH3RF1, a scaffold protein that is required for pro-apoptotic JNK activation (PubMed:22128169). Facilitates TNF-alpha-mediated recruitment of adapter proteins TRADD and RIPK1 to TNFRSF1A and regulates PAK4 protein stability via inhibition of its ubiquitin-mediated proteasomal degradation (PubMed:24130170). Inhibits PPP1CA phosphatase activity (PubMed:19389623, PubMed:19945436).

target="_blank">19945436).

Cellular Location

Nucleus.

Tissue Location

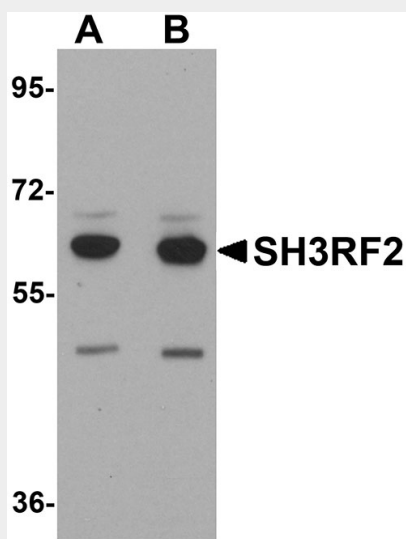
Heart (at protein level). Up-regulated in colon cancer tissues as compared to normal colon tissues (at protein level) Testis. In the heart, present in the apex, left atrium, right atrium, left ventricle and right ventricle, but not in the aorta

SH3RF2 Antibody - Protocols

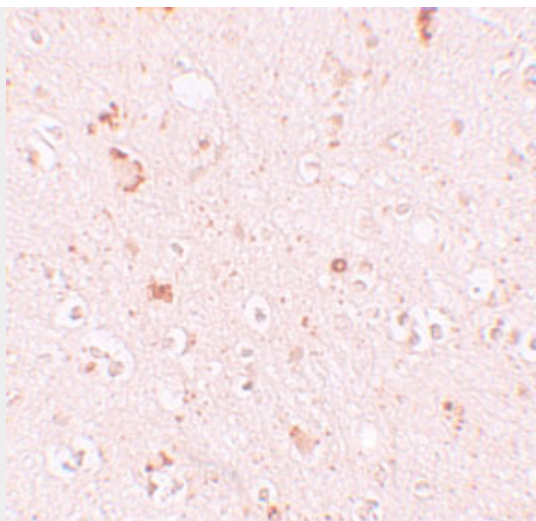
Provided below are standard protocols that you may find useful for product applications.

- [Western Blot](#)
- [Blocking Peptides](#)
- [Dot Blot](#)
- [Immunohistochemistry](#)
- [Immunofluorescence](#)
- [Immunoprecipitation](#)
- [Flow Cytometry](#)
- [Cell Culture](#)

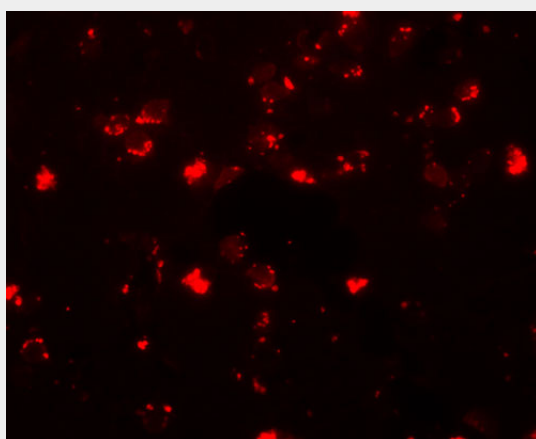
SH3RF2 Antibody - Images



Western blot analysis of SH3RF2 in 3T3 cell lysate with SH3RF2 antibody at (A) 1 and (B) 2 µg/mL.



Immunohistochemistry of SH3RF2 in human brain tissue with SH3RF2 antibody at 10 µg/mL.



Immunofluorescence of SH3RF2 in human brain tissue with SH3RF2 antibody at 20 µg/mL.

SH3RF2 Antibody - Background

SH3RF2 Antibody: Although the SH3 domain containing ring finger 2 protein (SH3RF2) has been identified as a marker of the nucleus accumbens in the human brain, little is known about this protein. Recent yeast two-hybrid experiments have shown that SH3RF2 associates with protein phosphatase 1 (PP1) and is expressed primarily in heart and testis tissue. Recombinant SH3RF2 enhanced PP1 enzymatic activity and antagonized the ability of phospho-inhibitor-1 or -2 to inhibit PP1, suggesting that SH3RF2 may play a role working with PP1 in cardiac functions.

SH3RF2 Antibody - References

Ernst C, Sequeira A, Klempan, et al. Confirmation of region-specific patterns of gene expression in the human brain. *Neurogenetics* 2007; 8:219-24.
Chen CY, Lai NS, Yang JJ, et al. FLJ23654 encodes a heart protein phosphatase 1-binding protein (Hepp1). *Biochem. Biophys. Res. Commun.* 2010; 391:698-702.