

**NALP13 Antibody**  
**Catalog # ASC11201****Specification**

---

**NALP13 Antibody - Product Information**

Application	WB, ICC, IF
Primary Accession	<a href="#">Q86W25</a>
Other Accession	<a href="#">EAW72420</a> , <a href="#">119592826</a>
Reactivity	Human
Host	Rabbit
Clonality	Polyclonal
Isotype	IgG
Application Notes	NALP13 antibody can be used for detection of NALP13 by Western blot at 1 µg/mL. Antibody can also be used for immunocytochemistry starting at 2.5 µg/mL. For immunofluorescence start at 20 µg/mL.

**NALP13 Antibody - Additional Information**

Gene ID	126204
<b>Target/Specificity</b>	
NLRP13;	

**Reconstitution & Storage**

NALP13 antibody can be stored at 4°C for three months and -20°C, stable for up to one year. As with all antibodies care should be taken to avoid repeated freeze thaw cycles. Antibodies should not be exposed to prolonged high temperatures.

**Precautions**

NALP13 Antibody is for research use only and not for use in diagnostic or therapeutic procedures.

**NALP13 Antibody - Protein Information**

**Name** NLRP13

**Synonyms** NALP13, NOD14

**Function**

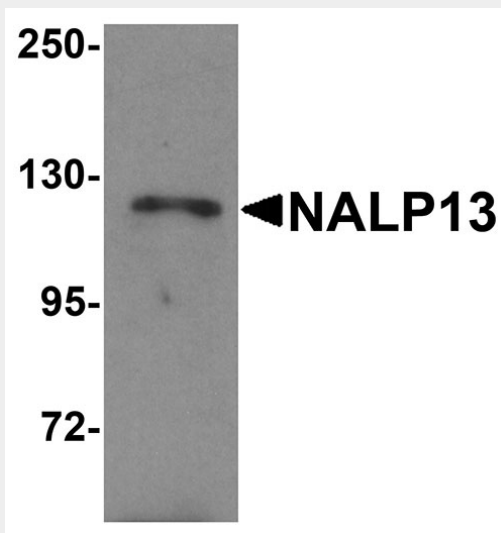
Involved in inflammation.

**NALP13 Antibody - Protocols**

Provided below are standard protocols that you may find useful for product applications.

- [Western Blot](#)
- [Blocking Peptides](#)
- [Dot Blot](#)
- [Immunohistochemistry](#)
- [Immunofluorescence](#)
- [Immunoprecipitation](#)
- [Flow Cytometry](#)
- [Cell Culture](#)

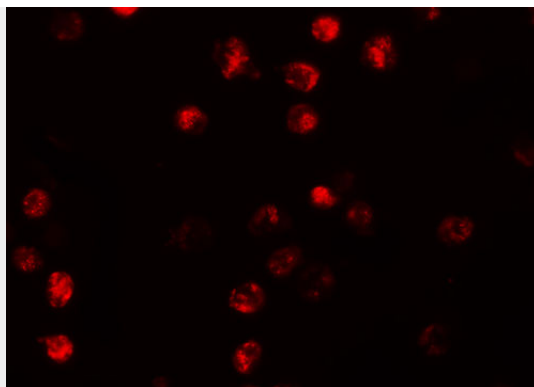
#### NALP13 Antibody - Images



Western blot analysis of NALP13 in K562 cell lysate with NALP13 antibody at 1 µg/mL.



Immunocytochemistry of NALP13 in K562 cells with NALP13 antibody at 2.5 µg/mL.



Immunofluorescence of NALP13 in K562 cells with NALP13 antibody at 20 µg/mL.

### **NALP13 Antibody - Background**

**NALP13 Antibody:** NALP proteins are cytoplasmic proteins that form a subfamily within the larger CATERPILLER family and are thought to play a crucial role in cell proliferation and reproduction. Like all other NALP family members, NALP13 has a C-terminal leucine-rich repeat (LRR) region, an N-terminal Pyrin domain (PYD) followed by a NACHT domain, and a NACHT-associated domain. While little is known about the function of NALP13, it has been suggested that it may be implicated in the activation of proinflammatory caspases via inflammasomes.

### **NALP13 Antibody - References**

Tschopp J, Martinon F, and Burns K. NALPs: a novel protein family involved in inflammation. *Nat. Rev. Mol. Cell Biol.*2003; 4:95-104.  
Tian X, Pascal G, and Monget P. Evolution and functional divergence of NLRP genes in mammalian reproductive system. *BMC Evol. Biol.*2009; 9:202.