

KPNA5 Antibody
Catalog # ASC11209**Specification**

KPNA5 Antibody - Product Information

Application	IHC-P, E
Primary Accession	O15131
Other Accession	CAH71948 , 55664992
Reactivity	Human
Host	Rabbit
Clonality	Polyclonal
Isotype	IgG
Application Notes	KPNA5 antibody can be used for detection of KPNA5 by immunohistochemistry at 5 µg/mL.

KPNA5 Antibody - Additional InformationGene ID **3841****Target/Specificity**

KPNA5; KPNA5 antibody is human specific. KPNA5 antibody is predicted to not cross-react with other Importin alpha family members.

Reconstitution & Storage

KPNA5 antibody can be stored at 4°C for three months and -20°C, stable for up to one year. As with all antibodies care should be taken to avoid repeated freeze thaw cycles. Antibodies should not be exposed to prolonged high temperatures.

Precautions

KPNA5 Antibody is for research use only and not for use in diagnostic or therapeutic procedures.

KPNA5 Antibody - Protein Information**Name** KPNA5 ([HGNC:6398](#))**Function**

Functions in nuclear protein import as an adapter protein for nuclear receptor KPNB1. Binds specifically and directly to substrates containing either a simple or bipartite NLS motif. Docking of the importin/substrate complex to the nuclear pore complex (NPC) is mediated by KPNB1 through binding to nucleoporin FxFG repeats and the complex is subsequently translocated through the pore by an energy requiring, Ran-dependent mechanism. At the nucleoplasmic side of the NPC, Ran binds to importin-beta and the three components separate and importin-alpha and -beta are re-exported from the nucleus to the cytoplasm where GTP hydrolysis releases Ran from importin. The directionality of nuclear import is thought to be conferred by an asymmetric distribution of the GTP- and GDP-bound forms of Ran between the cytoplasm and nucleus. Mediates nuclear import of STAT1 homodimers and STAT1/STAT2 heterodimers by recognizing non-classical NLSs of STAT1 and STAT2 through ARM repeats 8-9. Recognizes influenza A virus nucleoprotein through ARM repeat 7-9 In vitro, mediates the nuclear import of human cytomegalovirus UL84 by recognizing a

non-classical NLS.

Cellular Location

Cytoplasm.

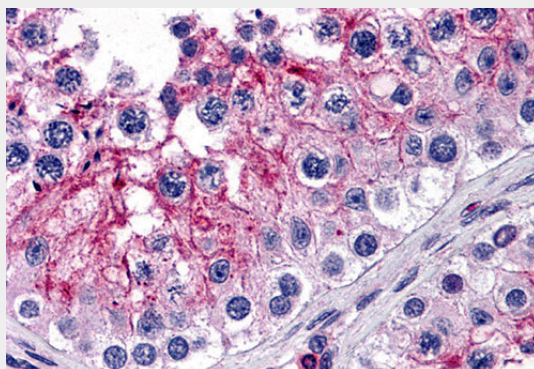
Tissue Location

Testis.

KPNA5 Antibody - Protocols

Provided below are standard protocols that you may find useful for product applications.

- [Western Blot](#)
- [Blocking Peptides](#)
- [Dot Blot](#)
- [Immunohistochemistry](#)
- [Immunofluorescence](#)
- [Immunoprecipitation](#)
- [Flow Cytometry](#)
- [Cell Culture](#)

KPNA5 Antibody - Images

Immunohistochemistry of KPNA5 in human testis tissue with KPNA5 antibody at 5 µg/mL.

KPNA5 Antibody - Background

KPNA5 Antibody: Karyopherin, a cytosolic and heterodimeric protein complex consisting of alpha and beta subunits, is responsible for targeting proteins with nuclear localization signals to the nuclear pore complex (NPC) by an energy requiring, Ran-dependent mechanism. The alpha subunit and imported substrate enter the nucleus and accumulate in the nucleoplasm, while the beta subunit accumulates at the NPC. KPNA5 belongs to a subfamily within the KPNA family that also includes KPNA4 and 6 and is thought to be involved in NLS-dependent protein import into the nucleus.

KPNA5 Antibody - References

- Moroianu J. Molecular mechanisms of nuclear protein transport. Crit. Rev. Eukaryot. Gene. Expr. 1997; 7:61-72.
- Gilchrist D and Rexach M. Molecular basis for the rapid dissociation of nuclear localization signals from karyopherin alpha in the nucleoplasm. J. Biol. Chem. 2003; 278: 51937-49.
- Kohler MC, Fiebler M, Hartwig S, et al. Evidence for distinct substrate specificity of importin alpha

family members in nuclear protein import. Mol. Cell. Biol. 1999; 19:7782-91.