

**TRIP6 Antibody**  
**Catalog # ASC11215****Specification**

---

**TRIP6 Antibody - Product Information**

Application	WB, IF, ICC, E
Primary Accession	<a href="#">Q15654</a>
Other Accession	<a href="#">NP_003293</a> , <a href="#">91208423</a>
Reactivity	Human, Mouse
Host	Rabbit
Clonality	Polyclonal
Isotype	IgG
Application Notes	TRIP6 antibody can be used for detection of TRIP6 by Western blot at 1 µg/mL. Antibody can also be used for immunocytochemistry starting at µg/mL. For immunofluorescence start at 20 µg/mL.

**TRIP6 Antibody - Additional Information**

Gene ID	7205
<b>Target/Specificity</b>	
TRIP6;	

**Reconstitution & Storage**

TRIP6 antibody can be stored at 4°C for three months and -20°C, stable for up to one year. As with all antibodies care should be taken to avoid repeated freeze thaw cycles. Antibodies should not be exposed to prolonged high temperatures.

**Precautions**

TRIP6 Antibody is for research use only and not for use in diagnostic or therapeutic procedures.

**TRIP6 Antibody - Protein Information**

**Name** TRIP6

**Synonyms** OIP1

**Function**

Relays signals from the cell surface to the nucleus to weaken adherens junction and promote actin cytoskeleton reorganization and cell invasiveness. Involved in lysophosphatidic acid-induced cell adhesion and migration. Acts as a transcriptional coactivator for NF- kappa-B and JUN, and mediates the transrepression of these transcription factors induced by glucocorticoid receptor.

**Cellular Location**

Cytoplasm, cytoskeleton. Cell junction, focal adhesion. Nucleus. Cytoplasm Note=Shuttles between nucleus and cytoplasm (PubMed:16624523) Colocalizes with actin (PubMed:10826496).

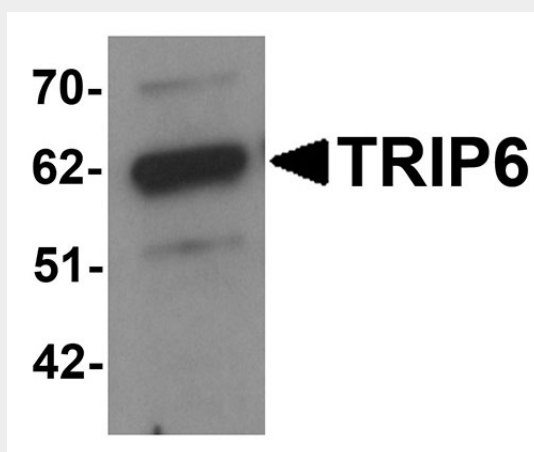
**Tissue Location**

Abundantly expressed in kidney, liver and lung. Lower levels in heart, placenta and pancreas.  
Expressed in colonic epithelial cells. Up-regulated in colonic tumors

**TRIP6 Antibody - Protocols**

Provided below are standard protocols that you may find useful for product applications.

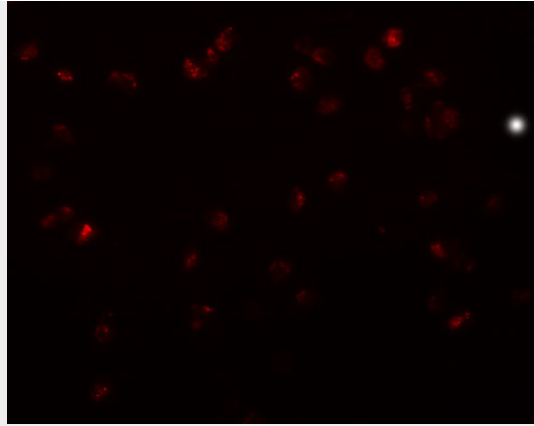
- [Western Blot](#)
- [Blocking Peptides](#)
- [Dot Blot](#)
- [Immunohistochemistry](#)
- [Immunofluorescence](#)
- [Immunoprecipitation](#)
- [Flow Cytometry](#)
- [Cell Culture](#)

**TRIP6 Antibody - Images**

Western blot analysis of TRIP6 in EL4 cell lysate with TRIP6 antibody at 1  $\mu$ g/mL.



Immunocytochemistry of TRIP6 in HeLa cells with TRIP6 antibody at  $\mu$ g/mL.



Immunofluorescence of TRIP6 in HeLa cells with TRIP6 antibody at 20 µg/mL.

### **TRIP6 Antibody - Background**

**TRIP6 Antibody:** TRIP6 (Thyroid receptor interacting protein 6) is a zyxin-related focal adhesion molecule involved in cell motility and antiapoptotic responses. TRIP6 is predominantly expressed in kidney, liver and lung. It has three LIM domains, a PDZ-binding motif, a Crk SH2-binding motif and/or other protein interacting domains. TRIP6 regulates NF-κB activation and interacts with RICK and TRAF2, proteins that are involved in TNF signaling. TRIP6 antagonizes Fas-induced apoptosis and promotes Fas-mediated cell migration in apoptosis-resistant glioma cells via Src-dependent phosphorylation of TRIP6 at Tyr-55.

### **TRIP6 Antibody - References**

Murthy KK, Clark K, Fortin Y, et al. ZRP-1, a zyxin-related protein, interacts with the second PDZ domain of the cytosolic protein tyrosine phosphatase hPTP1E. *J. Biol. Chem.*1999; 274:20679-87.

Kassel O, Schneider S, Heilbock C, et al. A nuclear isoform of the focal adhesion LIM-domain protein Trip6 integrates activating and repressing signals at AP-1- and NF-kappaB regulated promoters. *Genes Dev.*2004; 18:2518-2528.

Lai YJ, Chen CS, Lin WJ, et al. c-Src-mediated phosphorylation of TRIP6 regulates its function in lysophosphatidic acid-induced cell migration. *Mol. Cell. Biol.*2005; 25:5859-5868.

Li L, Bin LH, Li F, et al. TRIP6 is a RIP2-associated common signaling component of multiple NF-kB activation pathways. *J. Cell. Sci.*2005; 118:555-563.